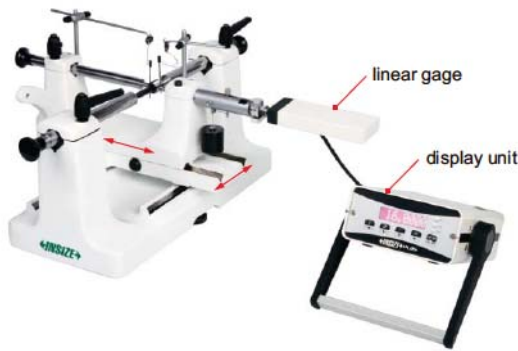
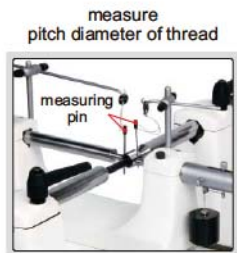


EXTERNAL THREAD MEASURING DEVICE CODE ISQ-TE100



- Quickly measure major, pitch and minor diameters of external thread
- Suitable for metric, inch, Whitworth, NPT and BSPT



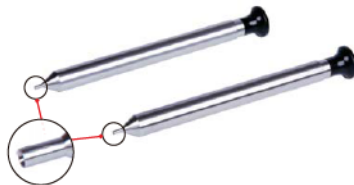
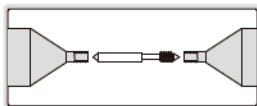
Measuring pin (optional)

- To measure pitch diameter of external thread
- Each size is supplied in pair
- Hardness: 60±2HRC



Code	Pins included	Pin diameter (mm)
ISQ-TE100-A	21 pairs	0.170, 0.195, 0.220, 0.250, 0.290, 0.335, 0.390, 0.455, 0.530, 0.620, 0.725, 0.895, 1.100, 1.350, 1.650, 2.050, 2.550, 3.200, 4.000, 5.050, 6.350

Female center (optional)



- With small holes to support small workpieces without female centers
- Supplied in pair

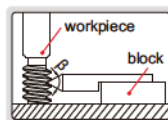
Code
ISQ-TE100-C

Find pointer (optional)

- To find measuring point of NPT or BSPT



Code	Angle β	Applicable thread
ISQ-TE100-F	60°	NPT
ISQ-TE100-G	55°	BSPT



Display unit (optional)

Code	7108-1*
Display	8 digits
Character height	9mm
Dust/waterproof	IP20
Resolution	0.1µm



7108-1

* Refer to 7108-1 for details

Code	Range	Resolution	Accuracy	Repeatability
ISQ-TE100	0-100mm	0.1µm	2µm	0.5µm

OPTIONAL ACCESSORY

Measuring pin	ISQ-TE100-A
Measuring prism	ISQ-TE100-B
Female center	ISQ-TE100-C
Clamp	ISQ-TE100-D
Setting disc	ISQ-TE100-E
60° find pointer	ISQ-TE100-F
55° find pointer	ISQ-TE100-G
Display unit	7108-30
Linear gage	7108-1

Setting disc (optional)

- To set initial value



Code	Discs included	Disc diameter (mm)
ISQ-TE100-E	22 pcs	3, 5, 8, 12, 16, 20, 24, 30, 35, 40, 45, 50, 55, 60, 65, 70, 75, 80, 85, 90, 95, 100

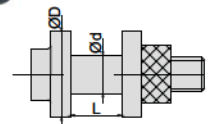
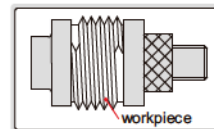
Measuring prism (optional)

- To measure minor diameter of external thread
- Each size is supplied in pair



Code	Prisms included	Size
ISQ-TE100-B	4 pairs	A, B, C, D (for different types and sizes of thread)

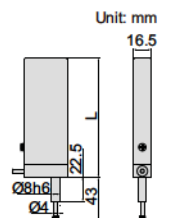
Clamp (optional)



- To hold large workpieces with inner bore

Code	Clamps included	d	D	L
ISQ-TE100-D	3 pcs	13.5	30	0-18
		23	60	0-18
		23	75	0-18

Linear gage (optional)



Code	7108-30*
Measuring range	30mm
Resolution	0.01µm
Accuracy	(0.5+L/60)µm L is measuring length in mm
Dust/waterproof	IP50

* Refer to 7108-30 for details