

WIRELESS DATA TRANSFER SYSTEM

INSIZE PLUS
MADE IN USA

APPLICABLE FOR
OTHER BRANDS



protecting cap
(optional)
code 7306-CAP



receiver
7306-2



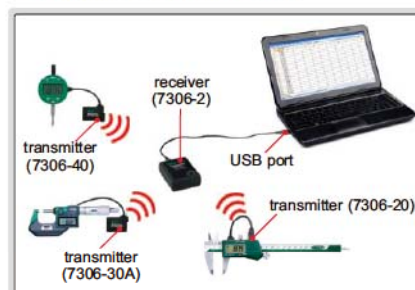
transmitter
7306-20



software CD
(included)



■ **CONNECTION:** one receiver can be connected to 30 transmitters.



Code	Description	Applicable products
7306-2	receiver	USB and RS232 connection ports, strong transmission signal, the maximum distance is 100m
7306-1	mini receiver	USB connection port, for short distance (within 20m) or barrier-free area
7306-20	transmitter	digital calipers, digital depth gages and digital height gages (not for 1103, 1150)
7306-30	transmitter	digital micrometers, digital three point internal micrometers (not for 3631, 3632, 3108, 3109, 3635)
7306-30A	transmitter	digital micrometers, digital three point internal micrometers (not for 3631, 3632, 3108, 3109, 3635)
7306-40	transmitter	digital indicators digital protractors

DATA COLLECTION:

- 1) Single collection: press the read button once to collect the reading from measuring tool once.
- 2) Multi collection: press the read button once to start collecting readings from measuring tools continuously, press the button again to stop collecting. Total collection times and interval time can be adjusted.

DISPLAY: data can be input to Excel as keyboard signal.

measuring tools code A, B, C

	A	B	C
1	12.54		
2	12.54		
3	20.05		
4	20.05		
5	20.05		
6	20.05		
7	20.05		
8	20.05		
9	20.05		
10	20.05		
11	20.05		
12	20.05		
13	20.05		
14	20.05		

All data are displayed in the same column. Each measuring tool can be coded such as A, B, C, etc.

7302-SPC5A 7302-SPC5B 7302-SPC2A 7302-SPC6 7302-SPC3A 7302-SPC4



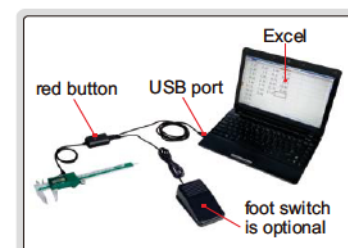
USB DATA OUTPUT CABLES



7304-2

Code	Description	Remark
7302-SPC5A	cable (length 2.5m)	for digital calipers and digital depth gages (not for 1103)
7302-SPC5B	cable (length 2.5m)	for digital calipers and digital depth gages (not for 1103)
7302-SPC2A	cable (length 2.5m)	for digital micrometers (not for 3631, 3632, 3108, 3109, 3635)
7302-SPC6	cable (length 2.5m)	for digital micrometers (not for 3631, 3632, 3108, 3109, 3635)
7302-SPC3A	cable (length 2.5m)	for digital indicators digital protractors
7302-SPC4	cable (length 2.5m)	for digital calipers 1103 series (for 1103 only)
7304-2	foot switch with cable (length 1.5m)	optional

- Connect to USB port of computer
- Without software, data can be input as keyboard signal to Excel, Word, etc.
- Press the red button or foot switch (optional) to input data

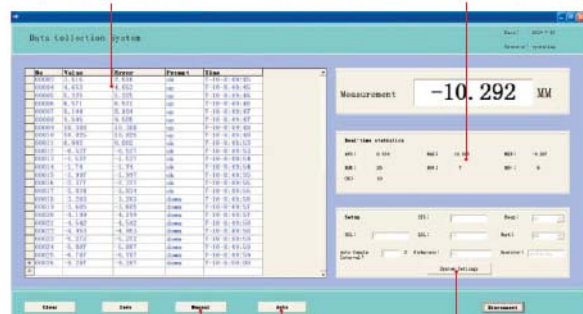


RS232 DATA OUTPUT CABLES



automatic judgment
by setting tolerance

test result display (maximum value,
minimum value, total quantity of
workpiece, quantity of Go and
No-Go, quantity of exceed upper
tolerance and exceed lower tolerance)



manual
sampling

automatic
sampling

set auto sampling
interval and tolerance



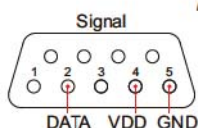
7305-SPC1A



7305-SPC2A

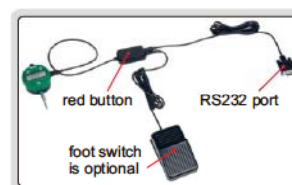


7305-SPC3

7304-2
foot switch (optional)

- Manual sampling and automatic sampling
- Press manual sampling button in software or red button on cable or foot switch once to collect the reading from measuring tool once
- Can be used in Windows Hyperterminal
- Supplied with software
- Voltage required: 5-10V
- Cable length 2.5m

Code	Applicable products
7305-SPC1A	<p>digital indicators digital protractors</p>
7305-SPC2A	<p>digital calipers and digital depth gages (not for 1103)</p>
7305-SPC3	<p>digital micrometers (not for 3631, 3632, 3108, 3109, 3635)</p>
7305-SPC3A	<p>digital micrometers (not for 3631, 3632, 3108, 3109, 3635)</p>
7304-2	foot switch with cable (length 1.5m), optional



DIGITAL HORIZONTAL SCALES

DATA OUTPUT

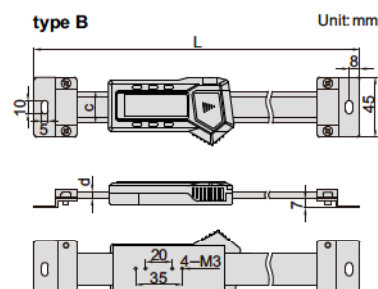
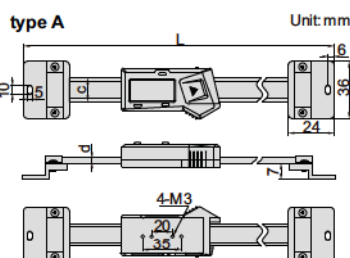
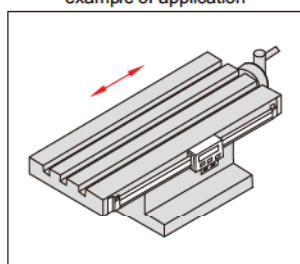
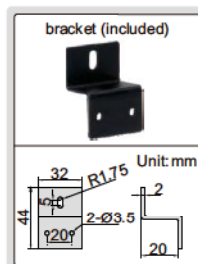


7101-300A



7101-400A

example of application



Code	Range	Type	Accuracy	L	c	d
7101-100A	100mm	A	±0.02mm	215	16	4
7101-150A	150mm	A	±0.03mm	265	16	4
7101-200A	200mm	A	±0.03mm	315	16	4
7101-300A	300mm	A	±0.04mm	445	16	4
7101-400A	400mm	B	±0.05mm	590	24	5.5
7101-500A	500mm	B	±0.05mm	690	24	5.5
7101-600A	600mm	B	±0.08mm	790	24	5.5
7101-800A	800mm	B	±0.10mm	990	24	5.5
7101-1000A	1000mm	B	±0.10mm	1190	31	10.5

- Resolution: 0.01mm/0.0005"
- Buttons: on/off, zero, mm/inch
- Automatic power off, move the digital unit to turn on power
- Battery CR2032
- Data output
- Made of stainless steel
- Supplied with bracket to be mounted on the back
- Optional accessory: data output cable (code 7306-20, 7302-SPC5A/SPC5B, 7305-SPC2A)

- Resolution: 0.01mm/0.0005"
- Button function: on/off, zero, mm/inch, ABS, data preset
- Absolute and incremental measurement
- Battery CR2032
- Data output
- Made of stainless steel
- Supplied with bracket to be mounted on the back
- Optional accessory: data output cable (code 7306-20, 7302-SPC5A/SPC5B, 7305-SPC2A)