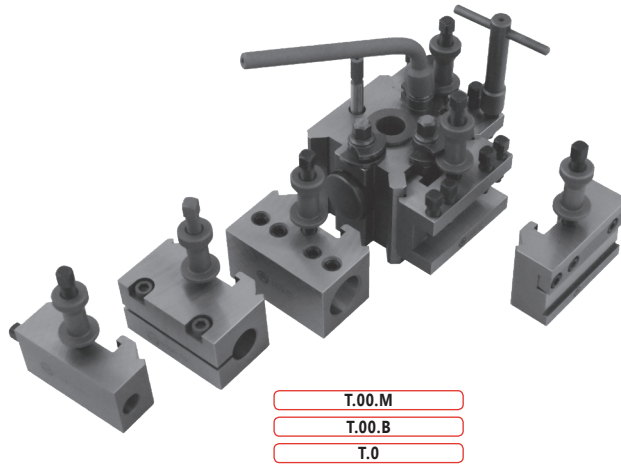


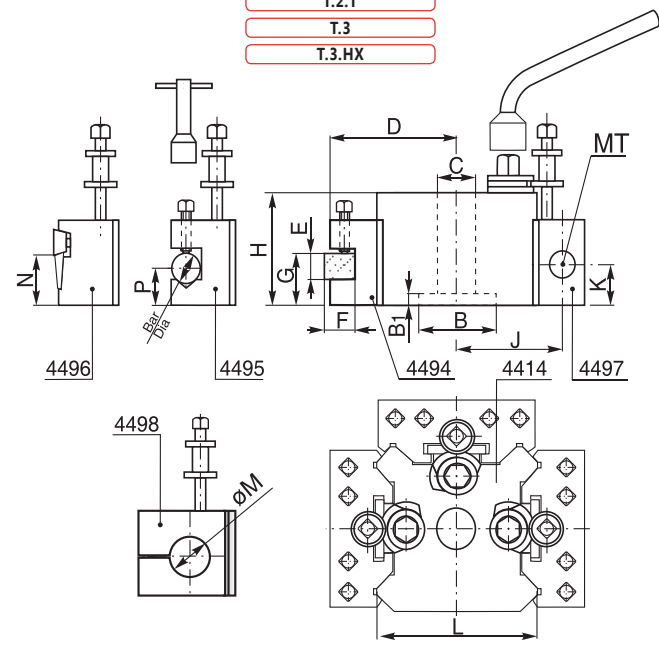
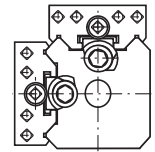
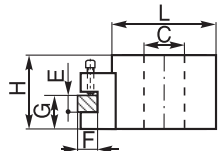
4414

- Schnellwechsel-Stahlhalter
- Quick change toolposts



T.00.M
T.00.B
T.0

T.1
T.1.X
T.2
T.2.T
T.3
T.3.HX



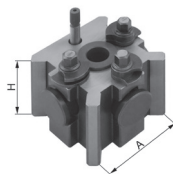
Größe Size	H	B	B ₁	C	D	E	F	G max.	G min.	Bar Dia	P max.	P min.	MK	J	K max.	K min.	L	N	M
								G max.	G min.		P max.	P min.			K max.	K min.			
T.00.M	37,0	—	—	11,2	50,0	12	11,0	27,0	17,0	11,0	22,5	12,5	—	—	—	—	58,0	16,0	—
T.00.B	42,0	—	—	16,0	50,0	12	11,0	32,0	17,0	11,0	27,5	12,5	—	—	—	—	58,0	16,0	—
T.0	51,0	22,22	12,5	19,0	62,0	16	13,0	36,5	20,5	16,0	32,0	16,0	1	52,5	28,5	16,0	73,0	27,0	19,0
T.1	63,5	31,75	8,5	19,0	62,0	20	13,0	46,0	30,0	16,0	44,5	25,5	1	52,5	41,0	22,0	73,0	27,0	19,0
T.1.X	73,0	31,75	8,5	19,0	62,0	20	13,0	57,0	35,0	16,0	54,0	32,0	1&2	52,5	51,0	28,5	73,0	27,0	19,0
T.2	71,5	44,45	9,5	25,5	74,5	20	19,0	52,5	36,5	19,0	46,0	24,0	2	65,0	47,5	27,0	97,0	33,5	25,4
T.2.T	76,0	44,45	9,5	25,5	84,0	25	25,5	58,5	39,5	19,0	50,0	24,0	2	70,0	51,0	27,0	106,0	33,5	25,4
T.3	95,5	50,80	11,5	25,5	101,5	32	25,5	74,5	51,0	25,5	51,0	28,5	3	85,5	58,2	36,5	125,5	39,5	38,0
T.3.HX	108,0	50,80	11,5	25,5	101,5	32	25,5	84,0	62,0	25,5	65,0	41,0	3	85,5	58,2	36,5	125,5	39,5	38,0

- 1
- 2
- 3
- 4
- 5
- 6
- 7

4414

4414

- Schnellwechsel-Stahlhalter
- Quick change toolposts



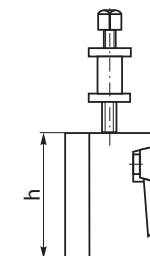
Artikel Nr. Code No.	Typ Type	A x H	Spannbereich Clamping range
800000651	T.00.M	48 x 37	bis zu/ up to 89 mm
800000652	T.00.B	48 x 42	bis zu/ up to 89 mm
800000653	T.0	62 x 51	bis zu/ up to 114 mm
800000654	T.1	62 x 63	114 mm bis/ up to 127 mm
800000655	T.1.X	62 x 73	114 mm bis/ up to 127 mm
800000656	T.2	82 x 71	127 mm bis/ up to 203 mm
800000657	T.2.T	82 x 76	127 mm bis/ up to 203 mm
800000658	T.3	100 x 92	203 mm bis/ up to 292 mm
800000659	T.3.HX	100 x 108	203 mm bis/ up to 292 mm

4496

- Standard Schnellwechseleinsatz
- Part off toolholders



Artikel Nr. Code No.	Grösse Size	Für Typ For Type	b x h
800000674	48	T.00M, T.00B	58 x 32
800000676	62	T.0,T.1, T.1X	73 x 47,5
800000677	82	T.2, T.2T	98,5 x 57
800000678	100	T.3, T3HX	124 x 70

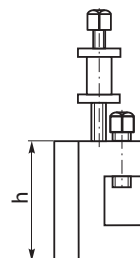


4494

- Standard Schnellwechseleinsatz
- Standard toolholders



Artikel Nr. Code No.	Grösse Size	Für Typ For Type	b x h
800000660	48	T.00M, T.00B	58 x 27
800000663	62N	T.0	73 x 35
800000662	62	T.1, T.1X	73 x 44
800000665	82N	T.2	98,5 x 50
800000664	82	T.2T	98,5 x 57
800000666	100	T.3, T.3HX	124 x 70

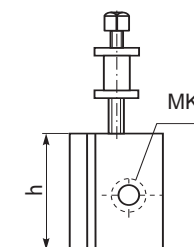


4497

- Schnellwechseleinsatz für Werkzeuge mit MK-Schaft
- Morse taper toolholders



Artikel Nr. Code No.	Grösse Size	Für Typ For Type	MK MT
800000680	62/1N	T.0	1
800000679	62/1	T.1, T.1X	1
800000681	62/2	T.1, T.1X	2
800000682	82/2	T.2, T.2T	2
800000683	100/3	T.3, T3HX	3

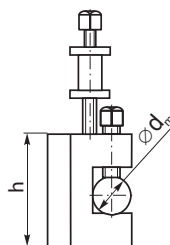


4495

- Schnellwechseleinsatz mit Prisma für runde Werkzeuge
- Vee type toolholders



Artikel Nr. Code No.	Grösse Size	Für Typ For Type	Ø _{d_max}	b x h
800000667	48	T.00M, T.00B	11,0	58 x 27
800000670	62N	T.0	16,0	73 x 35
800000669	62	T.1, T.1X	16,0	73 x 44
800000672	82N	T.2	19,0	98,5 x 50
800000671	82	T.2T	19,0	98,5 x 57
800000673	100	T.3, 3HX	25,5	124 x 70

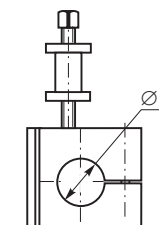


4498

- Schnellwechseleinsatz für Bohrstangenhalter
- Toolholders for boring bars



Artikel Nr. Code No.	Grösse Size	Für Typ For Type	ØD
800000684	62	T.0,T.1, T.1X	19
800000685	82	T.2, T.2T	25,4
800000687	100	T.3, T3HX	38

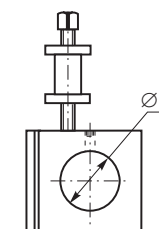


4499

- Schnellwechseleinsatz für Bohrstangenhalter
- Toolholders for boring bars



Artikel Nr. Code No.	Grösse Size	Für Typ For Type	ØD
800000688	62	T.0,T.1, T.1X	25
800000689	82	T.2, T.2T	32
800000690	100	T.3, T3HX	40





**VERSTELLSCHRAUBE
FÜR SCHNELLWECHSELHALTER
STOP FOR QUICKCHANGE TOOLHOLDERS**

Artikel Nr.	Typ	Für Typ
Code No.	Type	For Type
800003737	U-5514/1	T.00M
800003738	U-5514/0	T.00B
800003151	U-6876/0	T.0, T.1, T.1X
800003106	U-5762/0	T.2, T.2T
800003154	U-6880/0	T.3, T.3HX



**SPANNHÜLSE
CLAMP PAD**

Artikel Nr.	Typ	Für Typ
Code No.	Type	For Type
800003746	U-5505/1	T.00M
800003747	U-5505/0	T.00B
800003147	U-6859/0	T.0, T.1, T.1X
800003748	U-6174/0	T.2
800003104	U-5756/0	T.2T
800003749	U-6867/0	T.3, T.3HX



**SCHRAUBE
TOOLPOSTS SCREW**

Artikel Nr.	Typ	Für Typ	Form	Durchmesser	Gewinde
Code No.	Type	For Type	Shape	Diameter	Thread
800005897	U-5516/1	T.00M	◇	4mm	M5x20
800005896	U-5516/0	T.00B	◇	4mm	M5x20
800003152	U-6877/0	T.0, T.1, T.1X	□	8mm	M8x25
800003159	U-7386/0	T.2, T.2T	□	10mm	M10x30
800003155	U-6881/0	T.3, T.3HX	□	13mm	M12x40



**SPANNBOLZEN
CLAMP BOLT**

Artikel Nr.	Typ	Für Typ
Code No.	Type	For Type
800003739	U-5507/1	T.00M
800003101	U-5507/0	T.00B
800003148	U-6860/0	T.0, T.1, T.1X
800003117	U-6175/0	T.2
800003105	U-5757/0	T.2T
800003740	U-6868/0	T.3, T.3HX



**T-SCHLÜSSEL
T WRENCH**

- T-Schlüssel
- T-wrench with square socket

Artikel Nr.	Typ	Für Typ	□
Code No.	Type	For Type	
800003029	KL 4414-62X51	T0, T1, T1X	8mm
800003030	KL 4414-82X71	T2, T2T	10mm
800003028	KL 4414-100X108	T3, T3HX	13,5mm



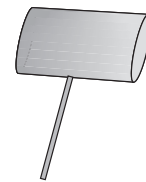
**SCHRAUBE
TOOLPOSTS SCREW**

Artikel Nr.	Typ	Für Typ	Form	Durchmesser	Gewinde
Code No.	Type	For Type	Shape	Diameter	Thread
800005899	U-5517/1	T.00M	◇	4mm	M5x16
800005898	U-5517/0	T.00B	◇	4mm	M5x16
800003153	U-6877/1	T.2, T.2T	□	8mm	M8x25
800003160	U-7386/1	T.0, T.1, T.1X	□	10mm	M10x30
800003156	U-6881/1	T.3, T.3HX	□	13mm	M12x40



**POSITIONIERBOLZEN
LOCATION PIN**

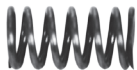
Artikel Nr.	Typ	Für Typ
Code No.	Type	For Type
800003741	U-7485/0	T.0
800003742	U-6863/0	T.1, T.1X
800003743	U-5760/0	T.2, T.2T
800003744	U-6871/0	T.3
800003745	U-7487/0	T.3HX



**T-SCHLÜSSEL
T WRENCH**

- T-Schlüssel
- T-wrench with hexagon socket

Artikel Nr.	Typ	Für Typ	◇
Code No.	Type	For Type	
800003168	KL 4414-48	T00M, T00B	4mm



**FEDER
SPRING**

Artikel Nr.	Typ	Für Typ
Code No.	Type	For Type
800003102	U-5510/0	T.00M, T.00B
800003753	U-6862/0	T.0, T.1, T.1X
800003754	U-5759/0	T.2, T.2T
800003755	U-6870/0	T.3, T.3HX



**SECHSKANTSCHLÜSSEL
HEX WRENCH**

- Sechskantschlüssel
- L-wrench with hexagon socket

Artikel Nr.	Typ	Für Typ
Code No.	Type	For Type
800003103	KL 4414-48 HEX	T.00M, T.00B
800003149	KL 4414-62X51 HEX	T.0, T.1, T.1X
800003118	KL 4414-82X71 HEX	T.2, T.2T
800003150	KL 4414-100X108 HEX	T.3, T.3HX

**ZUBEHÖR FÜR 8410
SPARE PARTS FOR 8410**



- Set mit drei Mitnehmern für die Linksdrehung
- Set of 3 drivers for left rotations

Artikel Nr.	Typ	Für Typ
Code No.	Type	For Type
800002748	S-2084/1	800002740
800002748	S-2084/1	800002741
800002751	S-2031/1	800002742
800002751	S-2031/1	800002743
800002754	S-2041/1	800002744
800002756	S-2243/0	800002745



- Set mit drei Mitnehmern für die Rechtsdrehung
- Set of 3 drivers for right rotations

Artikel Nr.	Typ	Für Typ
Code No.	Type	For Type
800002747	S-2084/0	800002740
800002747	S-2084/0	800002741
800002750	S-2031/0	800002742
800002750	S-2031/0	800002743
800002753	S-2041/0	800002744
800002755	S-2242/0	800002745



- Zentrierspitze
- Centering tip

Artikel Nr.	Typ	Für Typ
Code No.	Type	For Type
800002746	S-2083/0	800002740
800002746	S-2083/0	800002741
800002749	S-2030/0	800002742
800002749	S-2030/0	800002743
800002752	S-2040/0	800002744
800002752	S-2240/0	800002745