

1
2
3
4
5
6
7



3744



Standard Zubehör
Standard accessories



1 Satz harte einteilige Bohrbacken
1 Set of hard outside solid jaws



1 Satz harte einteilige Drehbacken
1 Set of hard inside solid jaws

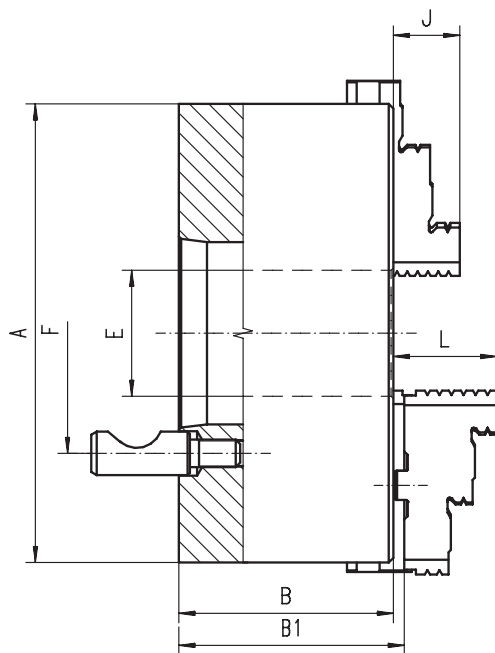


1 Schlüssel
1 Wrench

Ersatzteile • Spare parts 94-105

Technische Daten • Technical data 106-112

| Artikel Nr. Code No. | Typ Type |
|-------------------------|-------------|
| 353744210900 | 3744-125-3 |
| 353744220000 | 3744-125-4 |
| 353744230200 | 3744-160-3 |
| 353744240400 | 3744-160-4 |
| 353744250600 | 3744-160-5 |
| 353744280100 | 3744-200-4 |
| 353744290300 | 3744-200-5 |
| 353744300800 | 3744-200-6 |
| 353744330300 | 3744-250-6 |
| 353744340500 | 3744-250-8 |
| 353744360900 | 3744-315-6 |
| 353744370000 | 3744-315-8 |
| 353744400900 | 3744-400-8 |
| 353744410000 | 3744-400-11 |
| 353744460000 | 3744-500-8 |
| 353744470100 | 3744-500-11 |
| 353744570200 | 3744-630-11 |
| 353744580400 | 3744-630-15 |



- Gehärtete und geschliffene Oberflächen aller relevanten Baugruppen
- Hardened and ground working surfaces
- Planspirale gewuchtet
- Balanced scroll plate

| A | KK 1:4 | B | B1 | E | F | Stehbolzen | J | L | kg |
|-----|--------|-------|-------|-------|-------|------------|----|------|-----|
| | ST 1:4 | | | | | Studs | | | |
| 125 | 3 | 59,5 | 64,8 | 32,0 | 70,6 | 3 | 20 | 40,0 | 5 |
| 125 | 4 | 59,5 | 64,8 | 32,0 | 82,6 | 3 | 20 | 40,0 | 5 |
| 160 | 3 | 68,0 | 72,8 | 42,0 | 70,6 | 3 | 32 | 43,0 | 9 |
| 160 | 4 | 68,0 | 72,8 | 42,0 | 82,6 | 3 | 32 | 43,0 | 9 |
| 160 | 5 | 68,0 | 72,8 | 42,0 | 104,8 | 6 | 32 | 43,0 | 9 |
| 200 | 4 | 78,0 | 82,8 | 55,0 | 82,6 | 3 | 29 | 45,0 | 19 |
| 200 | 5 | 78,0 | 82,8 | 55,0 | 104,8 | 6 | 29 | 45,0 | 19 |
| 200 | 6 | 78,0 | 82,8 | 55,0 | 133,4 | 6 | 29 | 45,0 | 19 |
| 250 | 6 | 89,0 | 92,8 | 76,0 | 133,4 | 6 | 34 | 53,0 | 32 |
| 250 | 8 | 89,0 | 92,8 | 76,0 | 171,4 | 6 | 34 | 53,0 | 32 |
| 315 | 6 | 96,2 | 101,3 | 103,0 | 133,4 | 6 | 43 | 57,0 | 51 |
| 315 | 8 | 96,2 | 101,3 | 103,0 | 171,4 | 6 | 43 | 57,0 | 51 |
| 400 | 8 | 108,0 | 116,8 | 136,0 | 171,4 | 6 | 55 | 67,0 | 101 |
| 400 | 11 | 108,0 | 116,8 | 136,0 | 235,0 | 6 | 55 | 67,0 | 101 |
| 500 | 8 | 119,0 | 129,8 | 136,0 | 171,4 | 6 | 60 | 79,0 | 150 |
| 500 | 11 | 119,0 | 129,8 | 190,0 | 235,0 | 6 | 60 | 79,0 | 150 |
| 630 | 11 | 129,0 | 140,3 | 190,0 | 235,0 | 6 | 70 | 87,0 | 274 |
| 630 | 15 | 129,0 | 140,3 | 252,0 | 330,2 | 6 | 70 | 87,0 | 274 |

Größere Durchmesser finden Sie auf Seite 74-87! • Larger diameters available on page 74-87!

3744
3745

3745



Standard Zubehör
Standard accessories



1 Satz harte Aufsatzbacken
1 Set of hard top jaws



1 Satz harte Grundbacken
1 Set of hard master jaws



1 Schlüssel
1 Wrench

Ersatzteile • Spare parts 94-105

Technische Daten • Technical data 106-112

| Typ Type | Artikel Nr. Code No. |
|-------------|-------------------------|
| 3745-125-3 | 353745210700 |
| 3745-125-4 | 353745220900 |
| 3745-160-3 | 353745230000 |
| 3745-160-4 | 353745240200 |
| 3745-160-5 | 353745250400 |
| 3745-200-4 | 353745280000 |
| 3745-200-5 | 353745290100 |
| 3745-200-6 | 353745300600 |
| 3745-250-6 | 353745330100 |
| 3745-250-8 | 353745340300 |
| 3745-315-6 | 353745360700 |
| 3745-315-8 | 353745370900 |
| 3745-400-8 | 353745400700 |
| 3745-400-11 | 353745410900 |
| 3745-500-8 | 353745460800 |
| 3745-500-11 | 353745470000 |
| 3745-630-11 | 353745570000 |
| 3745-630-15 | 353745580200 |