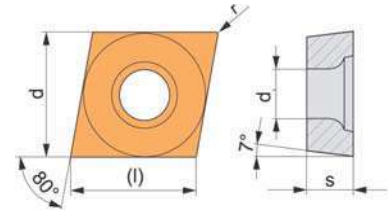
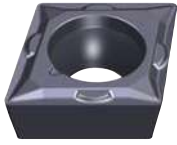



Ref. **8500****PLAQUITA INTERCAMBIABLE TORNEADO CCMT**

CCMT Turning Indexable Insert

Plaquette tournage CCMT


Condiciones Corte
 Cutting Conditions
 Conditions coupe

ISO	Dimensiones Dimensions					f mm	a _p mm		N° Art. C-525	N° Art. P-625	N° Art. P-Cermet	€
	l mm	d mm	s mm	d ₁ mm	r mm							
Acabado Fino / Fine Finishing / Finition Fine												
CCMT-060202-E-ZMM	6,40	6,35	2,38	2,80	0,20	0,03-0,11	0,06-1,70	10	59269	59271		8,25
CCMT-060204-E-ZMM	6,40	6,35	2,38	2,80	0,40	0,05-0,17	0,10-1,70	10	59270	59272		8,25
CCMT-09T304-E-ZMM	9,70	9,52	3,97	4,40	0,40	0,06-0,23	0,11-2,00	10	42895	42896		8,25
CCMT-09T308-E-ZMM	9,70	9,52	3,97	4,40	0,80	0,08-0,45	0,15-2,00	10	17842	17844		8,25
CCMT-120404-E-ZMM	12,90	12,70	4,76	5,50	0,40	0,07-0,27	0,14-2,40	10	42898	42899		10,39
CCMT-120408-E-ZMM	12,90	12,70	4,76	5,50	0,80	0,12-0,45	0,60-3,60	10	17845	17856		10,39
Semi-Acabado / Semi-Finishing / Semi-Finition												
CCMT-060202-E-ZRR	6,40	6,35	2,38	2,80	0,20	0,03-0,11	0,06-1,70	10	26277	10233		8,25
CCMT-060204-E-ZRR	6,40	6,35	2,38	2,80	0,40	0,06-0,17	0,20-2,40	10	26278	10242		8,25
CCMT-09T304-E-ZRR	9,70	9,52	3,97	4,40	0,40	0,08-0,23	0,25-3,00	10	26280	10278		8,25
CCMT-09T308-E-ZRR	9,70	9,52	3,97	4,40	0,80	0,10-0,40	0,50-3,00	10	26281	10287		8,25
CCMT-120404-E-ZRR	12,90	12,70	4,76	5,50	0,40	0,09-0,27	0,30-3,60	10	42901			10,39
CCMT-120408-E-ZRR	12,90	12,70	4,76	5,50	0,80	0,12-0,45	0,60-3,60	10	10131			10,39
Acabado / Finishing / Finition												
CCMT-060204-ZFCE	6,40	6,35	2,38	2,80	0,40	0,05-0,40	0,20-1,50	10			19983	9,13
CCMT-09T304-ZFCE	9,70	9,52	3,97	4,40	0,40	0,05-0,40	0,20-1,50	10			19987	11,89
CCMT-09T308-ZFCE	9,70	9,52	3,97	4,40	0,80	0,05-0,40	0,20-1,50	10			19989	11,89

 Ejemplo Pedido / Order Example / Exemple commande:
 Ref. 8500 CCMT-09T304-E-ZMM C-525

 Porta Plaquitas / Tool Holder / Porte-Plaquettes:
 Pag. 490, 497