

# Tirantes

## Pull Studs



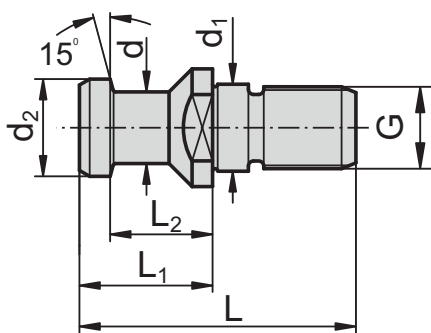
### TIR....1..

DIN 69872-A / DIN 69872-B

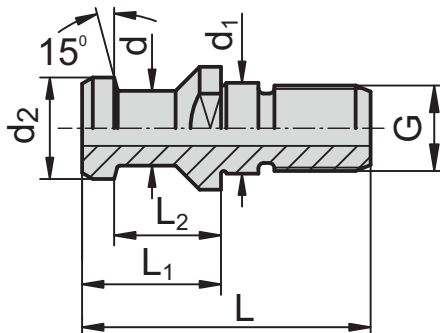


A	Referencia Order Nr.	G	d	d1	d2	L	L1	L2
30	TIR3012100	M12	9	13	13	44	24	19
	TIR3012101							
	TIR3012110							
40	TIR4016100	M16	14	17	19	54	26	20
	TIR4016101							
	TIR4016110							
50	TIR5024100	M24	21	25	28	74	34	25
	TIR5024101							
	TIR5024110							

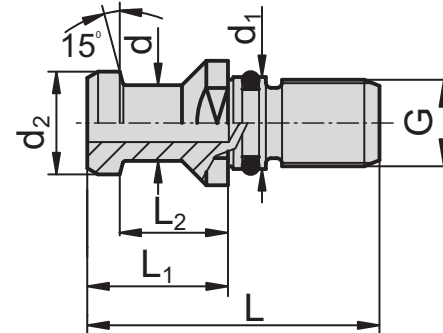
TIR.....100



TIR.....101

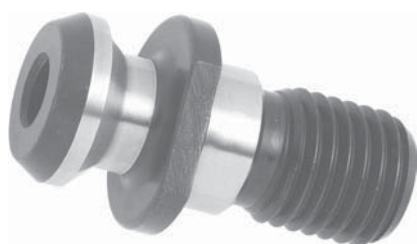


TIR.....110



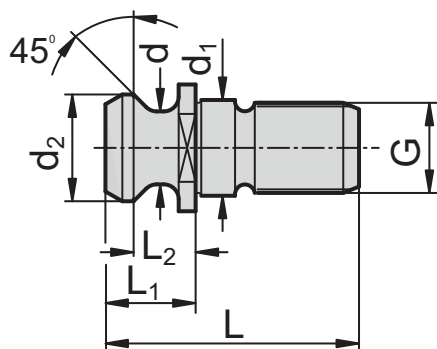
### TIR....2..

ISO7388/2-B

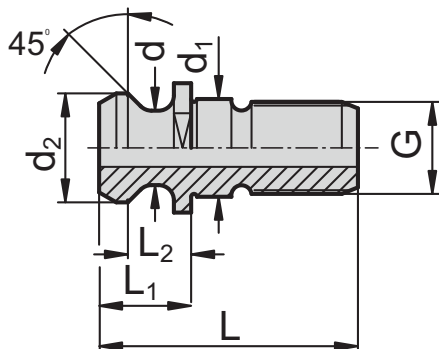


A	Referencia Order Nr.	G	d	d1	d2	L	L1	L2
30	TIR3012200	M12	9,15	13	13,2	34	11,5	8
	TIR3012201							
40	TIR4016200	M16	12,95	17	18,95	44,5	16,4	11,15
	TIR4016201							
50	TIR5024200	M24	19,6	25	29,1	65,5	25,55	17,95
	TIR5024201							

TIR.....200



TIR.....201



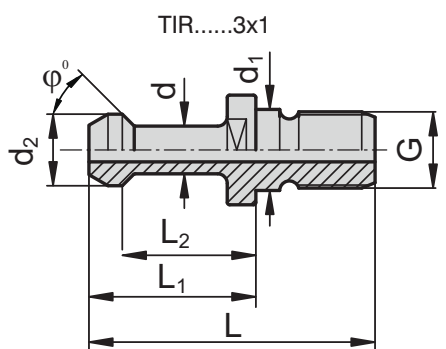
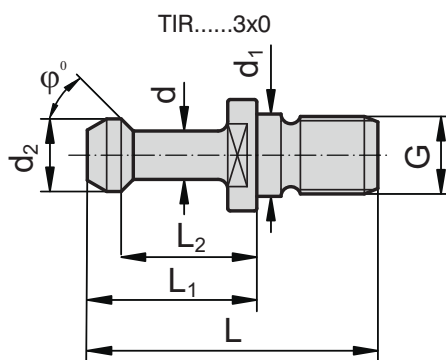
# Tirantes

## Pull Studs



### TIR....3..

JIS 6339-A + BT

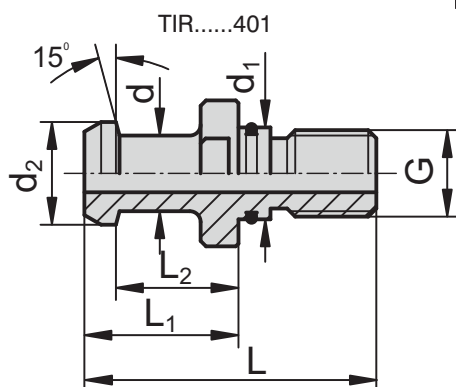


A	Referencia Order Nr.	$\varphi$	G	d	d1	d2	L	L1	L2
30	TIR3012300	45°	M12	7	12,5	11	43	23	18
	TIR3012310	60°							
	TIR3012320	90°							
40	TIR4016300	45°	M16	10	17	15	60	35	28
	TIR4016310	60°							
	TIR4016320	90°							
50	TIR5024300	45°	M24	17	25	23	85	45	35
	TIR5024310	60°							
	TIR5024320	90°							

A	Referencia Order Nr.	$\varphi$	G	d	d1	d2	L	L1	L2
30	TIR3012301	45°	M12	7	12,5	11	43	23	18
	TIR3012311	60°							
	TIR3012321	90°							
40	TIR4016301	45°	M16	10	17	15	60	35	28
	TIR4016311	60°							
	TIR4016321	90°							
50	TIR5024301	45°	M24	17	25	23	85	45	35
	TIR5024311	60°							
	TIR5024321	90°							

JIS 6339-B

### TIR....4..



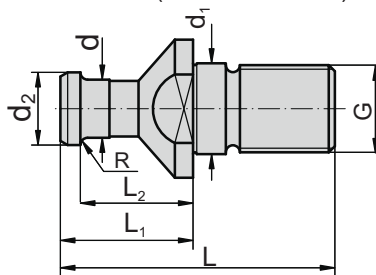
A	Referencia Order Nr.	G	d	d1	d2	L	L1	L2
30	TIR3012401	M12	8	12,5	12	43	23,4	18,4
40	TIR4016401	M16	13,9	17	19	54	29	23
50	TIR5024401	M24	21	25	28	74	34	25

# Tirantes especiales

## Special pull studs



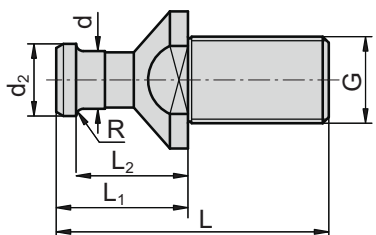
TIR.....500 (CORREA-ZAYER)



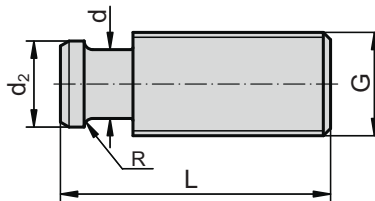
### TIR....5..

A		Referencia Order Nr.	G	d	d1	d2	L	L1	L2	R
40	TIR4016500	M16	11	17	14	61	32	27	R3	
	TIR5024500	M24	16	25	20	75	36,5	31	R4	
50	TIR5024510			-		76,75	36,75	31		
	TIR5024520			-		70	-	-		
	TIR5024530			18		25	22	90		46

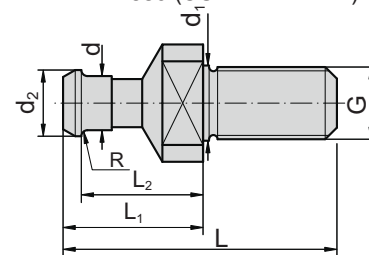
TIR.....510 (CORREA-ZAYER)



TIR.....520 (CORREA-ZAYER)



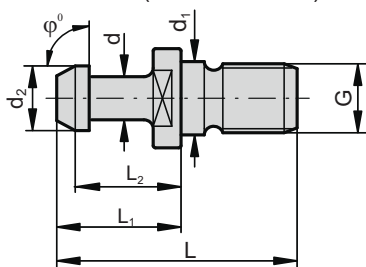
TIR.....530 (CORREA-ZAYER)



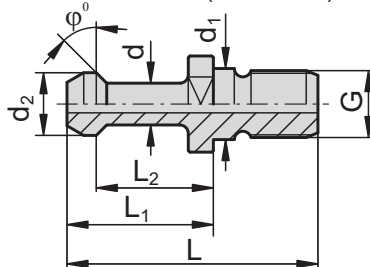
### TIR....6..

A		Referencia Order Nr.	G	d	d1	d2	L	L1	L2	φ
40	TIR4016600	M16	10	17	15	50	25	17,5	90°	
	TIR4016650					65	37	29,5	45°	

TIR.....600 (MAZAK-MITSUI)



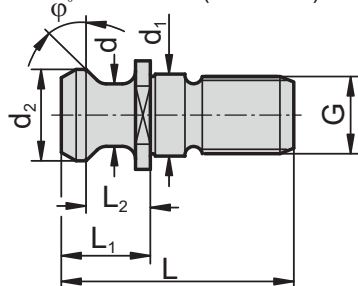
TIR.....650 (CINCINATI)



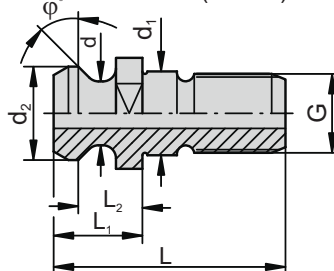
### TIR....7..

A		Referencia Order Nr.	G	d	d1	d2	L	L1	L2	φ
40	TIR4016700	M16	12,5	17	19	44	19	14	45°	
	TIR4016701									
50	TIR5024750	M24	18	25	24	71	31	23	90°	

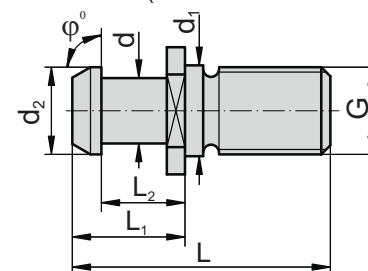
TIR.....700 (HYUNDAI)



TIR.....701 (FADAL)



TIR.....750 (ZAYER-MITSUI SEIKI)



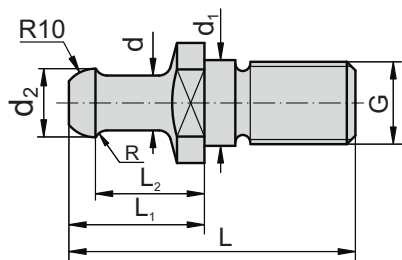
## Tirantes especiales

### Special pull studs



# TIR....8..

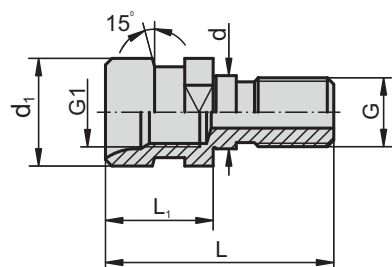
TIR.....800 (RAMBAUDI)



A	Referencia Order Nr.	G	d	d1	d2	L	L1	L2	R
50	<b>TIR5024800</b>	M24	16	25	20	80,5	39,5	32	3,57

Tirante para convertir DIN69871 ó BT en DIN2080  
From DIN69871 or BT to DIN2080 converting pull stud

# TCI.....



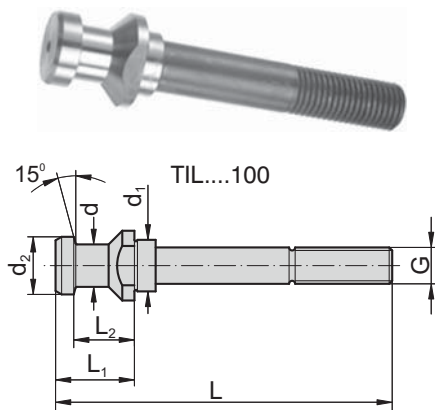
A	Referencia Order Nr.	Aplicación Application	G	G1	d	d1	L	L1
40	<b>TCI4016100</b>	DIN 69871	M16	M16	17	25	53	25
	<b>TCI4016300</b>	JIS 6339+BT	M16	M16	17	25	56	28
50	<b>TCI5024100</b>	DIN/BT	M24	M24	25	39,29	68	25

# Tirantes largos

## Long pull studs

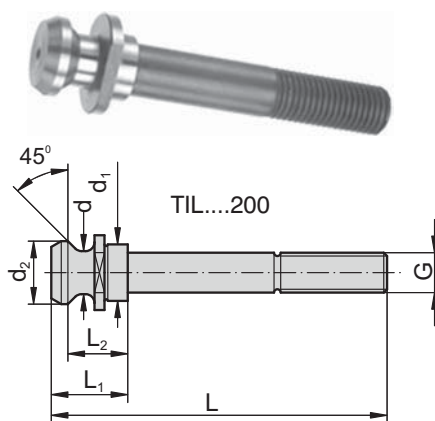


### TIL....1..



A	Referencia Order Nr.	G	d	d1	d2	L	L1	L2
40	TIL4012100	M12	14	17	19	111	26	20
	TIL4016100	M16						
50	TIL5020100	M20	21	25	28	149	34	25

ISO 7388/2-B

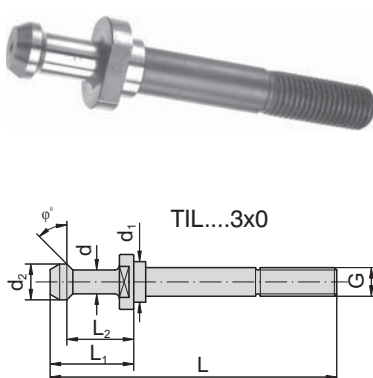


### TIL....2..

A	Referencia Order Nr.	G	d	d1	d2	L	L1	L2
40	TIL4012200	M12	12,95	17	18,95	101	16,40	11,15
	TIL4016200	M16						
50	TIL5020200	M20	19,6	25	29,1	141	25,55	17,95

### TIL....3..

JIS 6339-A + BT



A	Referencia Order Nr.	φ	G	d	d1	d2	L	L1	L2
30	TIL3010300	45°	M10	7	12,5	11	87	23	18
	TIL3010310	60°							
	TIL3010320	90°							
40	TIL4010300	45°	M10	10	17	15	118	35	28
	TIL4010310	60°							
	TIL4010320	90°							
	TIL4012300	45°							
	TIL4012310	60°							
	TIL4012320	90°							
50	TIL4016300	45°	M16	10	17	15	120	35	28
	TIL4016310	60°							
	TIL4016320	90°							
	TIL5020300	45°							
	TIL5020310	60°							
	TIL5020320	90°							