

Tuercas

Nuts

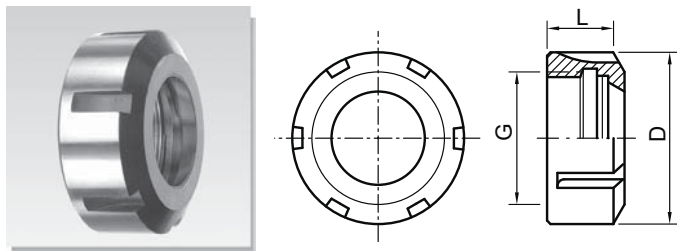


DIN 6499 Tuercas Estándar y a bolas para pinzas ER (DIN 6499-B)

Standart & ball bearing nut for ER (DIN 6499-B) collets

74ERD/B

74ERD

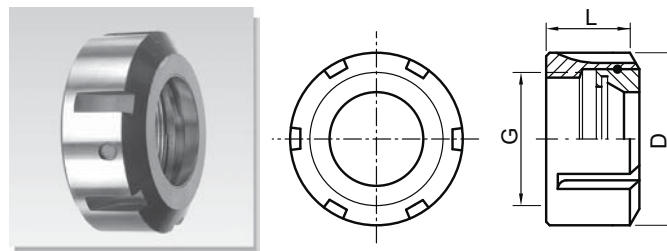


Referencia
Order Nr.

G	D	L
---	---	---

ER16	74ERD16	M22x1.5	32	17.5
ER25	74ERD25	M32x1.5	42	20
ER32	74ERD32	M40x1.5	50	22.5
ER40	74ERD40	M50x1.5	63	25.5

74ERB



Referencia
Order Nr.

G	D	L
---	---	---

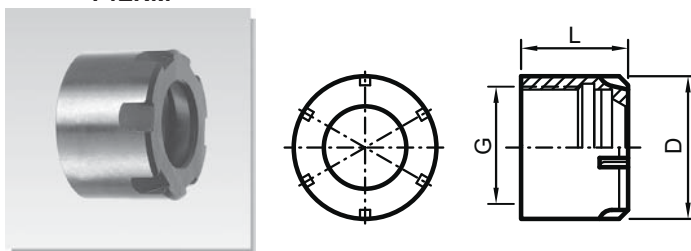
74ERB25	M32x1.5	42	22.7
74ERB32	M40x1.5	50	26.5
74ERB40	M50x1.5	63	29.8

DIN 6499 Tuercas MINI y hexagonal para pinzas ER (DIN 6499-B)

MINI & Hexagonal nut for ER (DIN 6499-B) collets

74ERM/H

74ERM

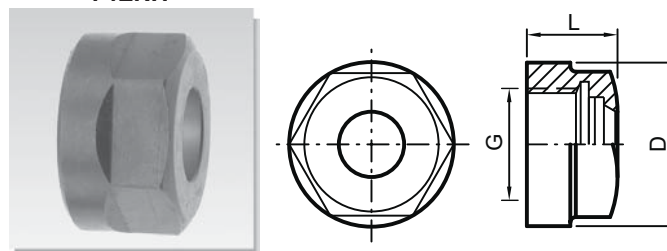


Referencia
Order Nr.

G	D	L
---	---	---

ER16	74ERM16	M19x1	22	18
ER20	74ERM20	M24x1	28	19
ER25	74ERM25	M30x1	35	20

74ERH



Referencia
Order Nr.

G	D	L
---	---	---

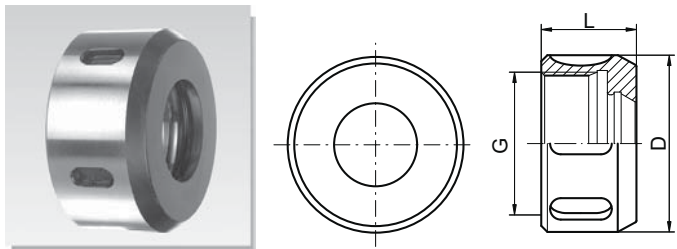
74ERH16	M22x1.5	28	17.5
74ERH20	M25x1.5	34	19

DIN 6388 Tuercas Estándar y a bolas para pinzas HW (DIN 6388)

Standart & ball bearing nut for HW (DIN 6388) collets

74HWN/B

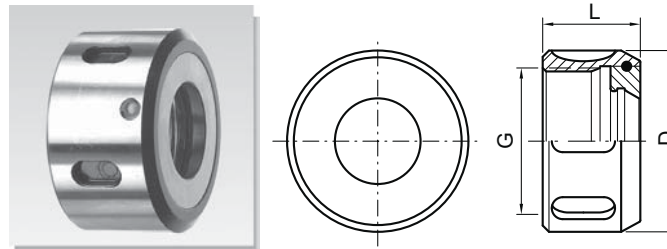
74HWN



G	D	L
---	---	---

HW20	74HWN20	M42x2	50	28
HW25	74HWN25	M48x2	60	30
HW32	74HWN32	M60x2.5	72	33.5

74HWN



G	D	L
---	---	---

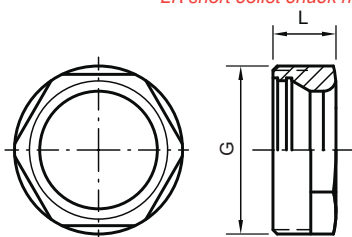
74HWN20	M42x2	52	30
74HWN25	M48x2	60	30
74HWN32	M60x2.5	72	35

Tuercas

Nuts



Tuerca para portapinzas extracorto ER (DIN 6499-B)
ER short collet chuck nut (DIN 6499-B)

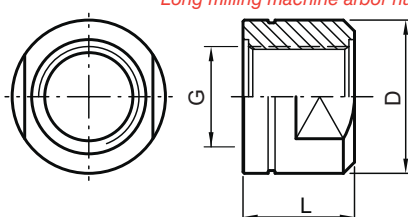
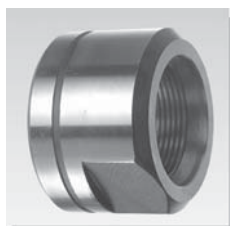


74ERC

Referencia
Order Nr.

		G	D	L
ER32	74ERC32	M40x1.5	40	15

DIN 2082 Tuerca para ejes portafresas largos (DIN 6355)
Long milling machine arbor nut (DIN 6355)



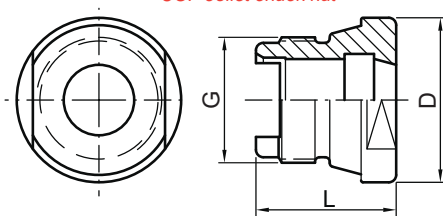
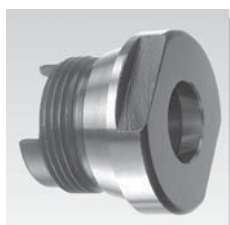
74EJE

d

Referencia
Order Nr.

		G	D	L
16	74EJE16	M14x1.5	26	16
22	74EJE22	M20x1.5	34	22
27	74EJE27	M24x1.5	40	28
32	74EJE32	M30x1.5	47	32
40	74EJE40	M36x2	55	40

Tuerca para portapinzas COP
COP collet chuck nut

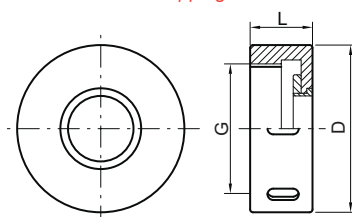
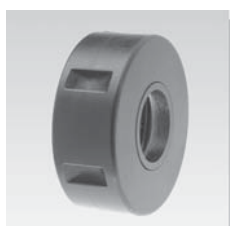


74COP

Referencia
Order Nr.

		G	D	L
COP16	74COP16	M34x2	44.6	38
COP32	74COP32	M60x2.5	76	54

Tuerca para roscador
Tapping head nut



74ARN

Referencia
Order Nr.

		G	D	L
M3-16	74ARN16	M32x1.5	42	22
M10-30	74ARN30	M48x2	59	22