

## Barras de mandrinar. DIN 228-B

### Boring bars. DIN 228-B

**Utilización:** Para todas las operaciones de mandrinado (agujeros pasantes o ciegos, mecanizado de desbaste o acabado)

**D1:** Capacidad de mandrinado con cuchilla inclinada.

**D2:** Capacidad de mandrinado con cuchilla recta.

**Suministro:** Las cuchillas de mandrinar no están incluidas.

**Application:** For all boring operations (thru and blind holes, rough and finish machining.

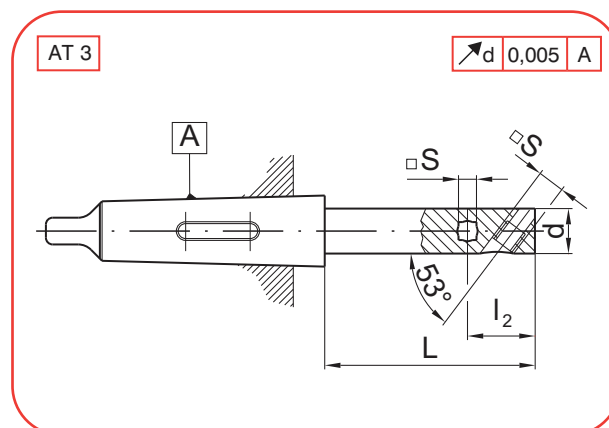
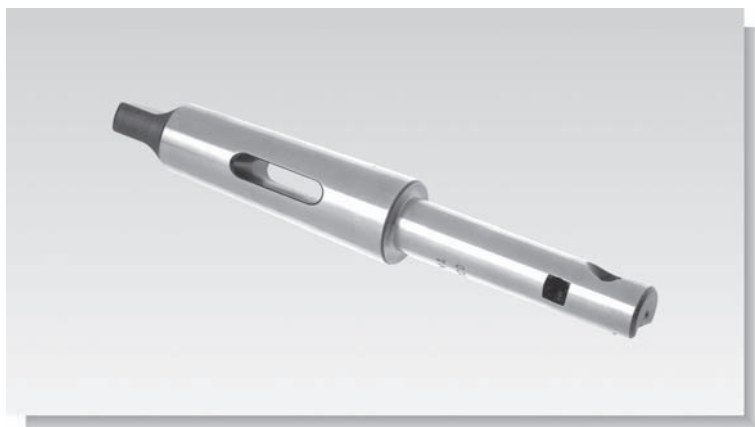
**D1:** Boring capacity with inclined tool bits.

**D2:** Boring capacity with straight tool bits.

**Delivery:** Boring tool bits are not included



# 41xx.BMN



A	COD	d	L	D1	D2	s	I2
04	4104.BMN.20.100	20	100	23-27	23-33	8	30
	4104.BMN.20.160	20	160				
	4104.BMN.25.100	25	100	27-38	27-42	8	32
	4104.BMN.25.160	25	160				
	4104.BMN.25.200	25	200	34-50	34-48	10	40
	4104.BMN.32.100	32	100				
	4104.BMN.32.160	32	160	44-68	44-60	12	46
	4104.BMN.32.250	32	250				
	4104.BMN.40.100	40	100	55-85	55-75	16	58
	4104.BMN.40.160	40	160				
	4104.BMN.40.250	40	250	69-105	69-95	20	60
	4104.BMN.50.160	50	160				
4104.BMN.50.250	50	250	87-130	87-120	25	78	
4104.BMN.50.315	50	315					
05	4105.BMN.20.100	20	100	23-27	23-33	8	30
	4105.BMN.20.160	20	160				
	4105.BMN.25.100	25	100	27-38	27-42	8	32
	4105.BMN.25.160	25	160				
	4105.BMN.25.200	25	200	34-50	34-48	10	40
	4105.BMN.32.100	32	100				
	4105.BMN.32.160	32	160	44-68	44-60	12	46
	4105.BMN.32.250	32	250				
4105.BMN.40.100	40	100	55-85	55-75	16	58	
4105.BMN.40.160	40	160					

A	COD	d	L	D1	D2	s	I2
05	4105.BMN.40.100	40	100	44-68	44-60	12	46
	4105.BMN.40.160	40	160				
	4105.BMN.40.250	40	250	55-85	55-75	16	58
	4105.BMN.50.160	50	160				
	4105.BMN.50.250	50	250	69-105	69-95	20	60
	4105.BMN.50.315	50	315				
	4105.BMN.63.160	63	160	87-130	87-120	25	78
	4105.BMN.63.250	63	250				
	4105.BMN.63.400	63	400	107-150	107-140	25	90
	4106.BMN.32.160	32	160				
4106.BMN.32.250	32	250	44-68	44-60	12	46	
4106.BMN.40.160	40	160					
4106.BMN.40.250	40	250	55-85	55-75	16	58	
4106.BMN.40.315	40	315					
4106.BMN.50.160	50	160	69-105	69-95	20	60	
4106.BMN.50.250	50	250					
4106.BMN.50.315	50	315	87-130	87-120	25	78	
4106.BMN.63.160	63	160					
4106.BMN.63.400	63	400	107-150	107-140	25	90	
4106.BMN.80.400	80	400					
4106.BMN.99.400	100	400					

#### Piezas de recambio - Spare parts



d	REF.	REF.
20	T410004 (M10x4)	T306006 (M6x6)
25	T410004 (M10x4)	T306006 (M6x6)
32	T412005 (M12x5)	T308008 (M8x8)
40	T414006 (M14x6)	T310012 (M10X12)
50	T420008 (M20x8)	T312012 (M12x12)
63	T425009 (M25x9)	T316016 (M16x16)
80	T430009 (M30x9)	T316020 (M16X20)
100	T430009 (M30x9)	T316025 (M16x25)