

Portafresas arrastre frontal. DIN 2080

Shell mill adaptors. DIN 2080

Utilización: Para Fresas con arrastre frontal según DIN 138

Tolerancia Ød: h6

Suministro: Incluidos los tetones de arrastre y el tornillo de sujeción.

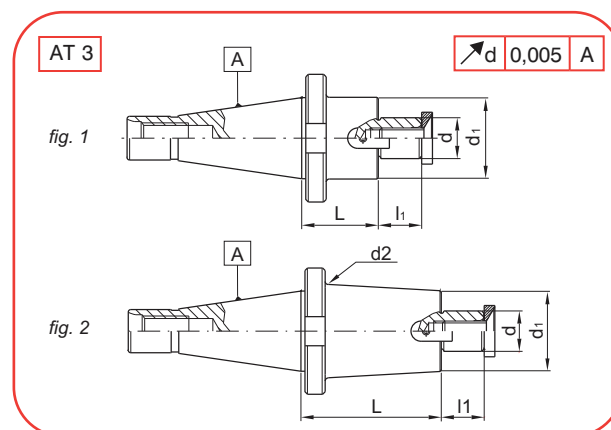
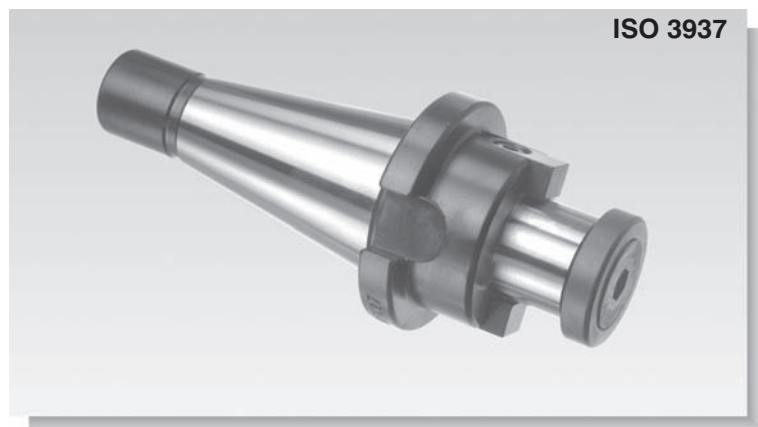
Application: For cutters with driving slots according to DIN 138

Tolerance Ød: h6

Delivery: Driving keys and tightening bolt included



35xx.MFN



A	FIG	COD	d	L	d1	d2±1	L1
30	fig 1	3530.MFN.16	16	30	32	-	17
	fig 1	3530.MFN.22	22	30	40	-	19
	fig 1	3530.MFN.27	27	30	48	-	21
	fig 1	3530.MFN.32	32	30	58	-	24
	fig 1	3530.MFN.40	40	30	70	-	27
40	fig 1	3540.MFN.16	16	30	32	-	17
	fig 1	3540.MFN.22	22	30	40	-	19
	fig 1	3540.MFN.27	27	30	48	-	21
	fig 1	3540.MFN.32	32	30	58	-	24
	fig 1	3540.MFN.40	40	30	70	-	27

A	FIG	COD	d	L	d1	d2±1	L1
50	fig 1	3550.MFN.16	16	50	32	-	17
	fig 1	3550.MFN.22	22	50	40	-	19
	fig 2	3550.MFN.22.120	22	120	40	55	19
	fig 2	3550.MFN.22.170	22	170	40	55	19
	fig 2	3550.MFN.22.220	22	220	40	55	19
	fig 1	3550.MFN.27	27	50	48	-	21
	fig 2	3550.MFN.27.120	27	120	48	63	21
	fig 2	3550.MFN.27.170	27	170	48	63	21
	fig 2	3550.MFN.27.220	27	220	48	63	21
	fig 1	3550.MFN.32	32	50	58	-	24
	fig 2	3550.MFN.32.120	32	120	58	68	24
	fig 2	3550.MFN.32.170	32	170	58	68	24
	fig 2	3550.MFN.32.220	32	220	58	68	24
	fig 1	3550.MFN.40	40	50	70	-	27
	fig 2	3550.MFN.40.120	40	120	70	70	27
fig 1	3550.MFN.50	50	50	97,5	-	30	

Piezas de recambio - Spare parts

d	REF.	REF.	REF.	REF.
16	AMF16	T108020 (M8x20)	CHA16	T203008 (M3x8)
22	AMF22	T110025 (M10x25)	CHA22	T204008 (M4x8)
27	AMF27	T112025 (M12x25)	CHA27	T205012 (M5x12)
32	AMF32	T116035 (M16x35)	CHA32	T206012 (M6x12)
40	AMF40	T120040 (M20x40)	CHA40	T208012 (M8x12)
50	AMF50	T124050 (M24x50)	CHA50	T210025 (M10x25)