

Barras de mandrinar. JIS B 6339 (BT)

Boring bars. JIS B 6339 (BT)

Utilización: Para todas las operaciones de mandrinado (agujeros pasantes o ciegos, mecanizado de desbaste o acabado)

D1: Capacidad de mandrinado con cuchilla inclinada.

D2: Capacidad de mandrinado con cuchilla recta.

Suministro: Las cuchillas de mandrinar no están incluidas.

Application: For all boring operations (thru and blind holes, rough and finish machining)

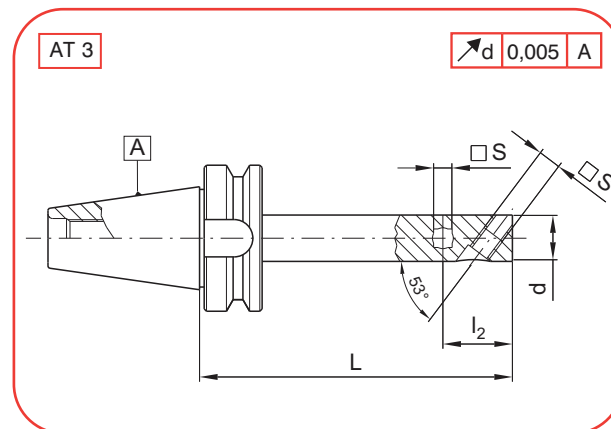
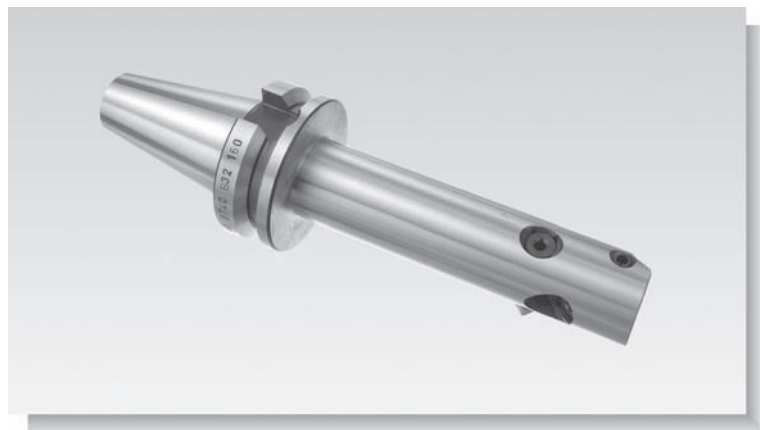
D1: Boring capacity with inclined tool bits.

D2: Boring capacity with straight tool bits.

Delivery: Boring tool bits are not included



30xx.BMN



A	COD	d	L	D1	D2	s	l2
40	3040.BMN.20.135	20	135	23-27	23-33	8	30
	3040.BMN.25.160	25	160	27-38	27-38	8	32
	3040.BMN.32.160	32	160	34-50	34-48	10	40
	3040.BMN.40.160	40	160	44-68	44-60	12	46
	3040.BMN.50.175	50	175	55-85	55-75	16	58
	3040.BMN.63.200	63	200	69-105	69-95	20	60

50	3050.BMN.20.135	20	135	23-27	23-33	8	30
	3050.BMN.25.160	25	160	27-38	27-38	8	32
	3050.BMN.32.160	32	160	34-50	34-48	10	40
	3050.BMN.40.160	40	160	44-68	44-60	12	46
	3050.BMN.50.175	50	175	55-85	55-75	16	58
	3050.BMN.63.200	63	200	69-105	69-95	20	60
	3050.BMN.80.200	80	200	87-130	87-120	25	78

Piezas de recambio - Spare parts

d	REF.	REF.
20	T410004 (M10x4)	T306006 (M6x6)
25	T410004 (M10x4)	T306006 (M6x6)
32	T412005 (M12x5)	T308008 (M8x8)
40	T414006 (M14x6)	T310012 (M10X12)
50	T420008 (M20x8)	T312012 (M12x12)
63	T425009 (M25x9)	T316016 (M16x16)
80	T430009 (M30x9)	T316020 (M16X20)