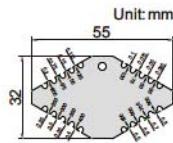
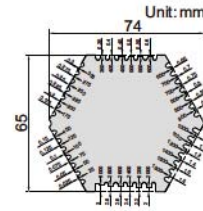


WET FILM GAGE

- Made of stainless steel



4845-1



4845-2

Code	Range	Accuracy	Thickness
4845-1	25-800μm	±5μm	1.8mm
4845-2	25-3000μm	25-100μm: ±5μm; 100μm-3000μm: ±5%	1mm

ULTRASONIC THICKNESS GAGE (THROUGH COATING) CODE ISU-300D

PENETRATE NON-METALLIC COATING AND
MEASURE THE THICKNESS OF METAL SUBSTRATE

DATA
OUTPUT



- Two measuring modes, Echo-Echo (E-E) and Transmit-Echo (T-E):
 - E-E is applicable for non-metallic coating (such as paint, plastic resin, etc.) on metal substrate, can penetrate coating and measure the thickness of substrate
 - T-E is to measure the thickness of material without coating, such as metal, plastic, glass, nylon, resin, ceramics, ice, etc.
- Low and high limits with judgment
- Average calculation of maximum 9 readings
- Memory of maximum 500 readings



VIDEO

SPECIFICATION

Measuring range	E-E mode: coating thickness 0~1mm, substrate thickness 4~25mm T-E mode: substrate thickness 1.5~200mm
Resolution	0.01mm (range<100mm) 0.1mm (range≥100mm)
Repeatability	0.03mm (range<100mm) 0.1mm (range≥100mm)
Accuracy	±0.04mm (range<10mm) ±(0.04+H/1000)mm (range 10~100mm) ±H/333mm (range≥100mm) H is the thickness to be measured in mm
Velocity	1000~9999m/s
Power supply	2×1.5V AAA batteries
Dimension	116×64×27mm
Weight	220g

STANDARD DELIVERY

Main unit	1pc
Transducer ISU-T07	1pc
Battery (AAA)	2pcs
Couplant (for ISU-T04, ISU-T06, ISU-T07, ISU-T12)	1bottle
USB cable and software disc	1pc

SPECIFICATION OF TRANSDUCERS

Code	Mode	Frequency	Diameter (Ød)	Measuring range	Minimum size of pipe for measurement (diameter × wall thickness)	Applicable temperature	Application
ISU-T07	T-E E-E	5.0MHz	10.8mm	T-E mode: 1.5~200mm E-E mode: 4~25mm	T-E mode: 20×1.2mm E-E mode: 20×4mm	<60°C	general use
ISU-T04	T-E	10.0MHz	6mm	0.7~20mm	10×1mm	<60°C	for small tube
ISU-T06	T-E	7.5MHz	8.5mm	0.7~50mm	15×1.2mm	<60°C	for thin material
ISU-T12	T-E	2.0MHz	16.3mm	2~400mm	30×4mm	<60°C	for casting iron
ISU-T13	T-E	5.0MHz	13mm	2~200mm	25×3mm	<350°C	for high temperature



transducer ISU-T04 (optional)



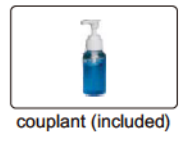
transducer ISU-T06 (optional)



transducer ISU-T12 (optional)



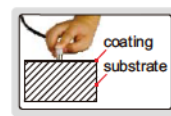
transducer ISU-T13 (optional)



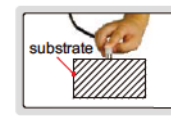
couplant (included)



software CD (included)



Echo-Echo mode (E-E)



Transmit-Echo mode (T-E)

OPTIONAL ACCESSORY

Transducer	ISU-T04, ISU-T06, ISU-T12, ISU-T13
Couplant (for ISU-T13)	ISU-HT5-COUPPLANT



software CD
(included)

DATA
OUTPUT

- Measure the thickness from one side of object, suitable for pipe, tank, etc.
- Applicable material: metal, plastic, glass, nylon, resin, ceramic, ice
- Low and high limits with judgement
- Average calculation of maximum 9 readings
- Memory of maximum 5000 readings with location number

SPECIFICATION

Resolution	0.01mm (range<100mm)
	0.1mm (range≥100mm)
Repeatability	0.03mm (range<100mm)
	0.1mm (range≥100mm)
Accuracy	±0.04mm (range<10mm)
	±(0.04+H/1000)mm (range 10~100mm)
	±H/333mm (range≥100mm) H is the thickness to be measured in mm
Velocity	1000-9999m/s
Power supply	2×1.5V AAA batteries
Dimension	64×116×27mm
Weight	220g

SPECIFICATION OF TRANSDUCERS

Code	Frequency	Diameter (Ød)	Measuring range	Minimum size of pipe for measurement (diameter × wall thickness)	Applicable temperature	Application
ISU-T08	5.0MHz	10.8mm	0.8~300mm	20×1.2mm	<60°C	general use
ISU-T04	10.0MHz	6mm	0.7~20mm	10×1mm	<60°C	for small tube
ISU-T06	7.5MHz	8.5mm	0.7~50mm	15×1.2mm	<60°C	for thin material
ISU-T12	2.0MHz	16.3mm	2~400mm	30×4mm	<60°C	for casting steel
ISU-T13	5.0MHz	13mm	2~200mm	25×3mm	<350°C	for high temperature

ULTRASONIC THICKNESS GAGE CODE ISU-250C



4.00mm block
for calibration

LCD with
backlight

USB
port

transducer
ISU-T08

Ød



couplant (included)



transducer ISU-T04
(optional)



transducer ISU-T06
(optional)



transducer ISU-T12
(optional)



transducer ISU-T13
(optional)

STANDARD DELIVERY

Main unit	1pc
Transducer ISU-T08	1pc
Battery (AAA)	2pcs
Couplant (for ISU-T04, ISU-T06, ISU-T08, ISU-T12)	1bottle
USB cable and software disc	1pc

OPTIONAL ACCESSORY

Transducer	ISU-T04, ISU-T06, ISU-T12, ISU-T13
Couplant (for ISU-T13)	ISU-HT5-COULPLANT



ATTENTION: NOT SUITABLE
FOR CASTING WORKPIECES

ULTRASONIC THICKNESS GAGE (BASIC MODEL) CODE ISU-100D

- Measure the thickness from one side of object, suitable for pipe, tank, etc.
- Applicable material: metal, plastic, glass, nylon, resin, ceramic, ice



SPECIFICATION

Measuring range		0.8~300mm
Resolution		0.01mm (range<100mm)
		0.1mm (range≥100mm)
Accuracy		±0.04mm (range<10mm)
		±(0.04+H/1000)mm (range 10~100mm)
		±H/333mm (range≥100mm) H is the thickness to be measured in mm
Transducer	frequency	5MHz
	diameter (Ød)	10.8mm
Minimum size of pipe for measurement		20×1.2mm (diameter × wall thickness)
Applicable temperature		<60°C
Velocity		1000-9999m/s
Power supply		2×AAA batteries
Dimension		114×64×28mm
Weight		200g



LCD with backlight

4.00mm calibration block

Ød

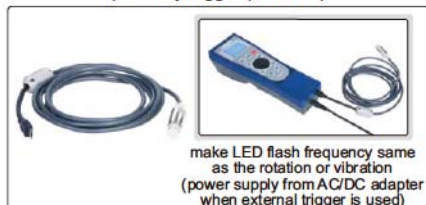
STANDARD DELIVERY

Main unit	1pc
Transducer	1pc
Couplant	1bottle
Battery (AAA)	2pcs

DIGITAL LED TACHOMETER/STROBOSCOPE CODE ISQ-TS120K



proximity trigger (included)



make LED flash frequency same
as the rotation or vibration
(power supply from AC/DC adapter
when external trigger is used)

- Make cyclical motion (rotation, vibration, etc.) objects to appear slow-moving or stationary
- On-line inspection or observation for moving objects
- Measure the rotation or vibration speed and frequency
- Can be triggered from outside by moving objects, make LED flash frequency same as the rotation or vibration

SPECIFICATION

Flash frequency range	60~120000FPM (Flash Per Minute), 1~2000Hz
Resolution	FPM 0.1FPM (<100000FPM), 1FPM (≥100000FPM)
	HZ 0.01Hz (<200Hz), 0.1Hz (≥200Hz)
Setting accuracy	±0.01%
Phase shift increment	3°
Flash pulse duration time	0.1~2.5°
LED light	3pcs CREE 10W lamp
LED life	3~5 years
Trigger mode	internal and external
Power supply	built-in rechargeable battery or AC/DC adapter
Dimension	208×70×60mm
Weight	380g

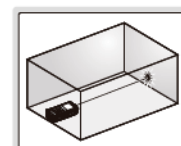


STANDARD DELIVERY

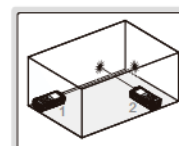
Main unit	1pc
AC/DC adapter	1pc
Proximity trigger	1pc

LASER DISTANCE METER CODE ISN-L70

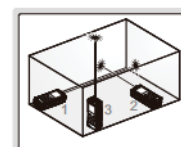
IP52
WATERPROOF



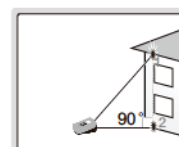
distance measurement



area measurement



volume measurement



height measurement

SPECIFICATION

Measuring range	0.05~70m
Accuracy	±1.5mm
Resolution	1mm
Measuring speed	0.5 second
Dust/waterproof	IP52
Laser type	650nm, Class II, <1mW
Beam size	25mm@30m
Memory	20 measuring data
Power supply	2xAA batteries, for 10000 measurements
Dimension (L×W×H)	110×45×30mm
Weight	130g

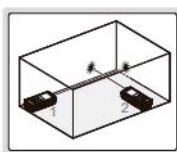
- Large display with backlight
- Unit: m, ft, in
- Distance, area, volume and height measurement
- With continuous measuring mode to track maximum and minimum value
- Automatic power-off: laser 30s, main unit 180s

STANDARD DELIVERY

Main unit	1pc
Battery (AA)	2pcs
Strap	1pc
Carrying bag	1pc



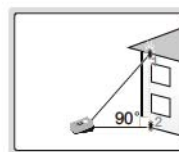
distance measurement



area measurement



volume measurement



height measurement

LASER DISTANCE METER CODE 9561-80

- Large display with backlight
- Unit: m, ft, in
- Distance, area, volume and height measurement
- Continuous measuring mode to track maximum and minimum value
- Memory of 99 measurement values
- Automatic power off: laser 20s, main unit 150s



SPECIFICATION

Measuring range	0.05 ~ 80m
Accuracy	±3mm
Resolution	1mm, 10mm, 0.1", 0.01ft
Measuring speed	0.5 second
Laser type	635nm, Class II, <1mW
Power supply	3×AAA batteries, for 4000 measurements
Dimension (L×W×H)	120×60×28mm
Weight	175g

STANDARD DELIVERY

Main unit	1pc
Battery (AAA)	3pcs



- Fast measurement with infrared or k-type sensor
- Maximum, minimum, average and difference modes
- Low and high limits with judgement
- Memory 20 measurement values
- Automatic power off

SPECIFICATION

Measuring range	infrared	-60~500°C/-76~932°F
	k-type sensor	-40~1080°C/-40~1976°F
Accuracy	infrared	±(1.5%+2)°C/±(1.5%+4)°F
	k-type sensor	±(1%+2)°C/±(1%+4)°F
Resolution		0.1°C/0.1°F (range<199.9), 1°C/1°F (range>199.9)
Distance to spot ratio (D:S)		12:1
Emissivity		0.1 ~ 1 (adjustable)
Laser type		630 ~ 670nm, Class II, <1mW
Response time		<500ms
Power supply		9V battery
Dimension		176×132×49mm
Weight		223g

STANDARD DELIVERY

Main unit	1pc
K-type sensor	1pc
9V battery	1pc

INFRARED THERMOMETER CODE 9110-500

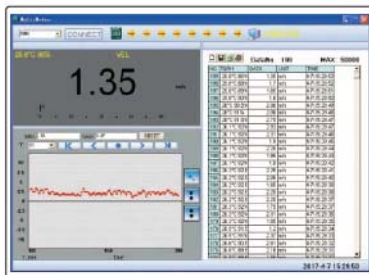


k-type sensor (included)



DIGITAL ANEMOMETER CODE 9331-40

- Measure velocity, flow, temperature and relative humidity
- Velocity unit: m/s, km/h, mil/h, ft/m, ft/s, knots
- Flow unit: CMS (cubic meter per second), CMM (cubic meter per minute), CFM (cubic feet per minute)
- Temperature type: ambient, dew point, wet bulb
- Maximum and minimum modes
- Automatic power off



software (included), display measurement values and graph, save and output data

DATA
OUTPUT



VIDEO



software CD
(included)

STANDARD DELIVERY

Main unit	1pc
USB cable and software	1pc
9V battery	1pc

SPECIFICATION

Measuring range	velocity	0.8~30m/s, 1.4~108km/h, 0.9~67.2mil/h, 1.3~98.5ft/s, 78~5900ft/m, 0.8~58.3knots
	flow	0~9999CMS, 0~99990CMM, 0~99990CFM
	temperature	-20~60°C/-4~140°F
	relative humidity	0~100%RH
Accuracy	velocity	±(2%+0.5) for m/s, km/h, mil/h, ft/s, knots ±(2%+50) for ft/m
	temperature	±1.5°C/±2.7°F
	relative humidity	±3% (20~80%RH), ±5% (<20%RH or >80%RH)
	velocity	0.01m/s, 0.01km/h, 0.01mil/h, 0.01ft/s, 1ft/m, 0.01knots
Resolution	flow	0.01CMS, 0.1CMM, 0.1CFM
	temperature	0.1°C/0.1°F
	relative humidity	0.1%RH
Flowing area range		0~9.999m²/0~9.999ft²
Sampling time		0.4s
Maximum working height		2000m
Output		USB
Power supply		9V battery
Dimension		165×85×38mm
Weight		200g

DIGITAL MOISTURE METER CODE 9341-50

- Suitable for wood, smooth cement, hard gypsum, mixed mortar, brick, etc.
- Measure moisture, temperature and relative humidity
- Temperature type: ambient, dew point, wet bulb
- Maximum and minimum modes
- Automatic power off

cover (included)



VIDEO



SPECIFICATION

Measuring depth		0~50mm
Measuring range	Moisture	0~60%
	temperature	-10~50°C/14~122°F
	relative humidity	0~100%RH
Accuracy	Moisture	±2%
	temperature	±2%
	relative humidity	±5%RH
Resolution	Moisture	0.1%
	temperature	0.1°C/0.1°F
	relative humidity	0.1%RH
Sampling time		0.5s for moisture 1s for temperature and relative humidity
Power supply		2×AAA batteries
Dimension		130×56×29mm
Weight		206g

STANDARD DELIVERY

Main unit	1pc
Battery (AAA)	2pcs

DIGITAL SOUND LEVEL METER CODE 9351-130

- Automatically select best range: 30~80dB, 40~90dB, 50~100dB, 60~110dB, 70~120dB, 80~130dB
- Over range indicator
- Real time, average, maximum modes
- Memory 16000 measurement values
- AC signal output: 0.707 Vrms at FS, impedance approx. 600Ω
- DC signal output: 10mV/dB, impedance approx.100Ω
- Automatic power off

SPECIFICATION

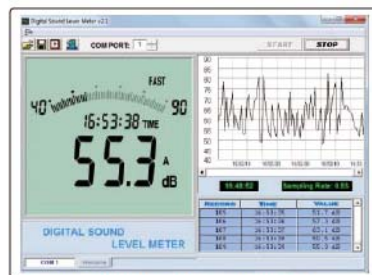
Measuring range	30~130dB
Accuracy	±2dB
Resolution	0.1dB
Sampling time	0.5s for digital, 0.05s for analogue
Response time	fast: 125ms, slow: 1s
Frequency	30Hz~8KHz
Frequency weighting	A/C
Microphone	electret condenser type
Output	RS232, AC/DC
Power supply	6×AAA batteries
Dimension	265×80×69mm
Weight	317g



software CD
(included)



DATA
OUTPUT



software (included), display measurement
values and graph, save and output data

STANDARD DELIVERY

Main unit	1pc
RS232 cable and software	1pc
Output connector	1pc
Battery (AAA)	6pcs

NON-CONTACT DIGITAL TACHOMETER CODE 9221-999

- Maximum and minimum modes
- Memory 100 measurement values
- Automatic power off

SPECIFICATION

Measuring range	50~99999RPM
Accuracy	±(0.03%+2) RPM
Resolution	0.01RPM (range 50~99.99RPM)
	0.1RPM (range 100~9999.9RPM)
	1RPM (range 10000~99999RPM)
Measuring distance	50~250mm
Power supply	4×AAA batteries
Dimension	155×60×27mm
Weight	118g

reflection sticker (included)



STANDARD DELIVERY

Main unit	1pc
Reflection sticker	1roll
Battery (AAA)	4pcs



CONTACT DIGITAL TACHOMETER CODE 9222-199

- Unit: RPM, m/min, m/sec, ft/min, ft/sec, in/min
- Maximum and minimum modes
- Memory 100 measurement values
- Automatic power off



wheel with 0.1m
perimeter (included)



wheel with 6"
perimeter (included)



cone cavity head
(included)



cone head
(included)



Extension rod
(included)

SPECIFICATION

Measuring range	50~19999RPM
Accuracy	±(0.03%+2) RPM
Resolution	0.01RPM (range 50~99.99RPM)
	0.1RPM (range 100~9999.9RPM)
	1RPM (range 10000~19999RPM)
Power supply	4×AAA batteries
Dimension	183×60×27mm
Weight	122g

STANDARD DELIVERY

Main unit	1pc
Wheel with 0.1m perimeter	1pc
Wheel with 6 inch perimeter	1pc
Cone cavity head	1pc
Cone head	1pc
Extension rod	1pc
Battery (AAA)	4pcs



60° GLOSS METER CODE ISQ-DG6



- To test the gloss of coating, such as painting, varnish, printing ink, etc.
- To test the material surfaces, such as metal, granite, ceramic, plastic, paper, etc.
- According to ISO 2813, ASTM D2457, ASTM D523
- Automatic power off

SPECIFICATION

Incidence angle	60°
Measuring range	0~150GU
Resolution	0.1GU
Accuracy	±1.2GU
Repeatability	0.4GU
Zero set error	0.2GU
Measuring area	20×10mm
Power supply	1×1.5V AA battery
Dimension	123×38×65mm
Weight	300g



base with calibration block
(included)

STANDARD DELIVERY

Main unit	1pc
Base with calibration block	1pc
Spare calibration block	1pc

20°/60°/85° GLOSS METER CODE ISQ-DG8



- To test the gloss of coating, such as painting, varnish, printing ink, etc.
- To test the material surfaces, such as metal, granite, ceramic, plastic, paper, etc.
- According to ISO 2813, ASTM D2457, ASTM D523
- Memory of 10000 measurement results for browsing and output
- Automatic power off

SPECIFICATION

Incidence angle	20°	60°	85°
Measuring range	0~2000GU	0~1000GU	0~160GU
Resolution	0.1GU (range≤119.9GU) 1GU (range>119.9GU)		
Accuracy	±1.5GU (range≤119.9GU) ±1.5% (range>119.9GU)		
Repeatability	0.2GU (range≤119.9GU) 0.2% (range>119.9GU)		
Zero set error	0.2GU		
Measuring area	10×9mm	16×9mm	39×5mm
Power supply	1×1.5V AA battery		
Dimension	155×48×75mm		
Weight	400g		

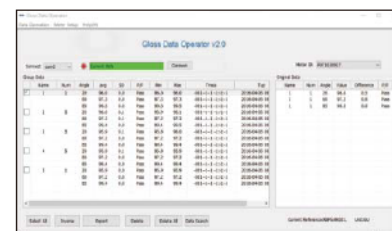


base with calibration block
(included)

DATA
OUTPUT



software CD
(included)



software (included), output to Excel

STANDARD DELIVERY

Main unit	1pc
Base with calibration block	1pc
USB cable and software	1pc

PORTABLE REFRACTOMETER CODE ISQ-RM30



- Quickly measure the concentration of coolant
- Refer to the refraction factor of coolant, for example: the refraction factor of grinding emulsion is 2.1, the reading value is 6%, so the actual concentration is $(2.1 \times 6\%) = 12.6\%$

SPECIFICATION

Measuring range	0~32%
Graduation	0.2%
Dimension	27×40×160mm
Weight	175g



SUITABLE FOR WATER
BASED COOLANT