



MEASURING AND TESTING INSTRUMENTS

NO. C032009





Welcome to INSIZE.

Founded in 1995, INSIZE is a dedicated supplier of measuring tools and testing instruments. To enable us to serve the world-wide market, we have begun to set up an INSIZE distribution network on a global basis, so that, wherever you are, INSIZE products with service and support are not far away.

Our key aims are:

- Quality products made to international standards with full guarantee.
- Innovation by continually striving to improve product design and appropriate presentation.
- Service and support to ensure you receive prompt answers and have trouble-free use of INSIZE products.
- Value is always a key element. Our aim is to give you high-performance products at a good price.

Our dedication to Quality, Innovation, Service and Value has created a worldwide demand for the INSIZE brand products. INSIZE has developed a distribution network in 42 countries and has built a solid reputation of product quality, reliability and value in these countries.

INSIZE is positioning itself for today's economic demands and tomorrow's future!

QUALITY | INNOVATION | SERVICE | VALUE



INDEX



**SURFACE ROUGHNESS TESTER AND
COMPARATOR** 1-2



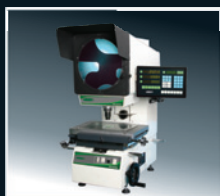
COATING THICKNESS GAUGE 3-4



ULTRASONIC THICKNESS GAUGE 5-7



VIBRATION TESTER 8



PROFILE PROJECTOR 9-18



VIDEO MEASURING SYSTEM 19-24



COORDINATE MEASURING MACHINE 25-27



DIGITAL READOUT 28



LINEAR SCALE 29-30



PORTABLE MEASURING MICROSCOPE 31



LCD MICROSCOPE 32-34



STEREO MICROSCOPE 35-38



METALLURGICAL MICROSCOPE 39-40



DIGITAL CAMERA 41-43
MICRO IMAGE ANALYSIS SOFTWARE
COLD LIGHT ILLUMINATOR



SAMPLE CUTTER 44-48
GRINDING/POLISHING MACHINE
MOUNTING PRESS



HARDNESS TESTER 49-69



PUSH/PULL FORCE GAUGE AND STAND 70-77



TORQUE METER 78-79



- Meet ISO, DIN, ANSI and JIS
- Four wave filtering methods: RC, PC-RC, GAUSS and D-P
- Connected to PC via RS232C interface
- Memory for 7 measuring results and measuring conditions for later use or transfer to PC

MODEL ISR-16 SURFACE ROUGHNESS TESTER

Technical specification

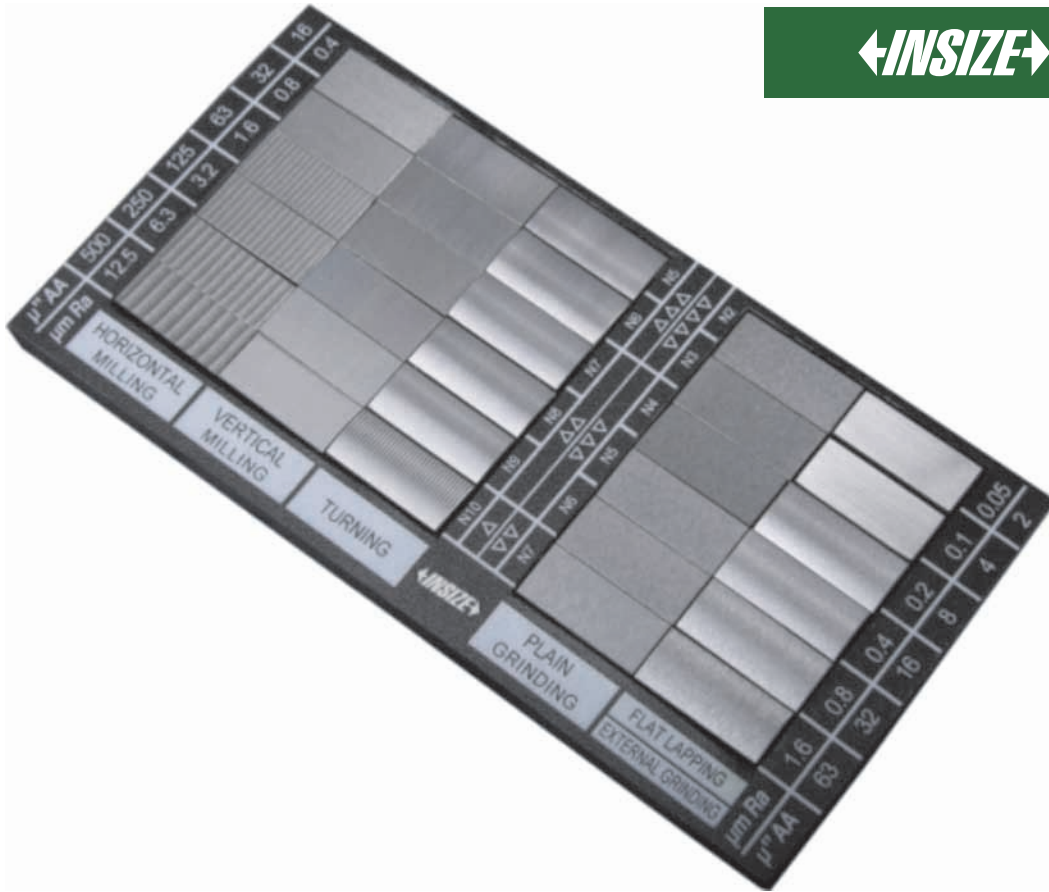
Display	LCD with blue backlight	
Parameters	Ra, Rz, Rq, Rt	
Measuring range	Ra, Rq	0.005-16.00µm / 0.20-630µin
	Rz, Rt	0.020-160.0µm / 0.78-6300µin
Accuracy	±10%	
Repeatability	6%	
Sensor	test principle	inductance type
	radius of probe pin	5µm/200µin
	material of probe pin	diamond
	measuring force of probe	4mN
	probe angle	90°
	vertical radius of guiding head	48mm/1.9"
Maximum stroke	17.5mm/0.69"	
Sampling length	0.25mm / 0.8mm / 2.5mm	
Evaluation length (L)	Ln=(1-5)L	
Speed	sampling length = 0.25mm	Vt=0.135mm/s
	sampling length = 0.8mm	Vt=0.5mm/s
	sampling length = 2.5mm	Vt=1mm/s
	returning	Vt=1mm/s
Resolution	0.001µm (reading<10µm) or 0.005µin (reading<10µin)	
	0.01µm (10µm≤reading<100µm) or 0.01µin (10µin≤reading<100µin)	
	0.1µm (reading≥100µm) or 0.1µin (reading≥100µin)	
Power supply	built-in rechargeable lithium battery	
Working conditions	temperature 0~50°C (32°F-122°F) humidity<80%RH	
Dimension	140×52×48 mm	
Weight	420g/14.8oz	

Standard accessories

Main unit	1pc
Sensor	1pc
Sensor protector	1pc
Standard test block	1pc
AC/DC adapter	1pc

Optional accessories

Cable & software for RS232C
Sensor extension pole
Measuring stand



MODEL 4131 SURFACE ROUGHNESS COMPARATOR

- Features group of standards for checking, identifying and specifying by symbol the degree of roughness of machine parts
- Packed in plastic box

Technical specification

Including:	
2pcs flat lapping	2, 4µin 0.1, 0.05µm
4pcs external grinding	8, 16, 32, 63µin 0.2, 0.4, 0.8, 1.6µm
6pcs plain grinding	2, 4, 8, 16, 32, 63µin 0.05, 0.1, 0.2, 0.4, 0.8, 1.6µm
6pcs horizontal milling	16, 32, 63, 125, 250, 500µin 0.4, 0.8, 1.6, 3.2, 6.3, 12.5µm
6pcs vertical milling	16, 32, 63, 125, 250, 500µin 0.4, 0.8, 1.6, 3.2, 6.3, 12.5µm
6pcs turning	16, 32, 63, 125, 250, 500µin 0.4, 0.8, 1.6, 3.2, 6.3, 12.5µm



MODEL ISO-1250 COATING THICKNESS GAUGE

- Application: measure the thickness of non-magnetic coating layer on magnetic material or measure the thickness of non-conductive coating layer on non-ferrous material

Technical specification

Operating principle	magnetic induction (F) & eddy current (N)
Measuring range	0~1250 μ m/0~50mil
Resolution	0.1 μ m /0.1mil for range<100 μ m/4mil 1 μ m/0.1mil for range \geq 100 μ m/4mil
Accuracy	1~3% L (L is measuring thickness) or 2.5 μ m (whichever is greater)
Min. workpiece radius	F: convex 1.5mm/0.06", concave 25mm/0.98" N: convex 3mm/0.12", concave 50mm/1.97"
Min. measuring diameter	\varnothing 6mm/0.24"
Min. thickness of substrate material	0.3mm/0.012"
Power supply	4 \times 1.5V AAA batteries
Dimension	126 \times 65 \times 27mm
Weight	85g/3oz

Standard delivery

Main unit	1pc
F type probe	1pc
N type probe	1pc
F calibration base	1pc
N calibration base	1pc
Calibration foil	4pcs
1.5V AAA battery	4pcs

Optional accessories

Cable & software for RS232C

←INSIZE→



MODEL ISO-1250FN

COATING THICKNESS GAUGE

- Application: measure the thickness of non-magnetic coating layer on magnetic material or measure the thickness of non-conductive coating layer on non-ferrous material
- Built-in probe

Technical specification

Operating principle	magnetic induction (F) & eddy current (N)
Measuring range	0~1250 μ m/0~50mil
Resolution	0.1 μ m/0.1mil for range<100 μ m/4mil 1 μ m/0.1mil for range \geq 100 μ m/4mil
Accuracy	1~3% L (L is measuring thickness) or 2.5 μ m (whichever is greater)
Min. workpiece radius	F: convex 1.5mm/0.06", concave 25mm/0.98" N: convex 3mm/0.12", concave 50mm/1.97"
Min. measuring diameter	\varnothing 6mm/0.24"
Min. thickness of substrate material	0.3mm/0.012"
Power supply	4 \times 1.5V AAA batteries
Dimension	126 \times 65 \times 27mm
Weight	85g/3oz

Standard delivery

Main unit	1pc
F calibration base	1pc
N calibration base	1pc
Calibration foil	4pcs
1.5V AAA battery	4pcs

Optional accessories

Cable & software for RS232C



MODEL ISU-200 ULTRASONIC THICKNESS GAUGE

- Built-in calibration block

Technical specification

Measuring range	1.2~200mm/0.05~8inch for steel
Operating principle	ultrasonic
Test Material	hard materials such as steel, cast iron, aluminum, copper, brass, zinc, quartz glass, polyethylene, PVC, etc.
Sound velocity	1000~9000m/s (3281-32806ft/s)
Resolution	0.1mm/0.001inch
Accuracy	$\pm(0.5\%L+0.1)$ L is the measuring thickness in mm
Output	RS232C
Power supply	4×1.5V AAA batteries
Working condition	temperature 0°C~50°C (32°F-122°F) humidity <80%RH
Dimension	120×62×30mm
Weight	164g/5.8oz

Standard delivery

Main unit	1pc
5MØ10mm/0.4" transducer	1pc
Couplant	1bottle
1.5V AAA Battery	4pcs

Optional accessories

5MØ6mm/0.24" small diameter transducer	measuring range (steel): 1.2~50.0mm/0.05~1.97"
	working temperature: -10°C~+60°C (14°F-140°F)
5MØ12mm/0.48" high temperature transducer	measuring range (steel): 1.2~225.0mm/0.05~8.86" (normal temperature)
	measuring range (steel): 4.0~100.0mm/0.16~3.94" (high temperature)
	working temperature: -10°C~+300°C (14°F-572°F)
Cable & software for RS232C interface	

MODEL ISU-250 ULTRASONIC THICKNESS GAUGE

- Suitable for various materials such as steel, stainless steel, aluminum, glass, polystyrene, polyethylene, etc.
- Built-in standard block of 4.00mm for fast calibration
- LCD display with backlight
- Low battery voltage indicator



Technical specification

Measuring range	0.7-250mm/0.027-10"
Resolution	0.01mm/0.001" for range < 100mm/4" 0.1mm/0.01" for range ≥ 100mm/4"
Velocity	1000-9999m/s (3281-32806ft/s)
Power supply	2×1.5V AAA batteries
Dimension	61×108×26mm
Weight	150g/5.3oz

Standard delivery

Main unit	1pc
Transducer ISU-PT08	1pc
Battery	2pcs
Couplant	1 bottle

Optional accessories

Transducer: ISU-ZT12, ISU-PT04, ISU-PT06, ISU-PT12, ISU-GT13

Specification of transducers

Code	Frequency	Measuring Range	Diameter	Temperature	Minimum size of steel pipe for measurement (diameter × wall thickness)	Application
ISU-ZT12	2.0MHz	2.0-350mm/0.08-14.00"	Ø16.3mm/0.64"	<60°C/140°F	30×3mm/1.18×0.12"	for casting steel
ISU-PT04	7.5MHz	0.8-20mm/0.03-0.80"	Ø5mm/0.20"	<60°C/140°F		for thin material
ISU-PT06	7.5MHz	0.7-50mm/0.03-2.00"	Ø8.5mm/0.34"	<60°C/140°F	10×1mm/0.40×0.04"	for thin material
ISU-PT08	5.0MHz	0.8-200mm/0.03-8.00"	Ø10.8mm/0.43"	<60°C/140°F	10×1.2mm/0.40×0.05"	general use
ISU-PT12	5.0MHz	1-250mm/0.04-10.00"	Ø12mm/0.47"	<60°C/140°F	10×1.2mm/0.40×0.05"	general use
ISU-GT13	5.0MHz	2.0-100mm/0.08-4.00"	Ø13mm/0.51"	<350°C/662°F	20×2mm/0.80×0.08"	for high temperature

MODEL ISU-250B ULTRASONIC THICKNESS GAUGE

- With low-high indication and alarm
- Average calculation of max. 9 readings
- Memory of max. 400 readings with location number
- RS232 to PC or mini-printer
- Built-in standard block of 4.00mm for fast calibration
- LCD display with backlight
- Low battery voltage indicator



Technical specification

Measuring range	0.7-250mm/0.027-10"
Resolution	0.01mm/0.001" for range<100mm/4" 0.1mm/0.01" for range≥100mm/4"
Velocity	1000-9999m/s (3281-32806ft/s)
Power supply	2×1.5V AAA batteries
Dimension	61×108×26mm
Weight	150g/5.3oz

Standard delivery

Main unit	1pc
Transducer ISU-PT08	1pc
Battery	2pcs
Couplant	1bottle

Optional accessories

Mini printer and cable
Software and cable
Transducer: ISU-ZT12, ISU-PT04, ISU-PT06, ISU-PT12, ISU-GT13

Specification of transducers

Code	Frequency	Measuring Range	Diameter	Temperature	Minimum size of steel pipe for measurement (diameter × wall thickness)	Application
ISU-ZT12	2.0MHz	2.0-350mm/0.08-14.00"	Ø16.3mm/0.64"	<60°C/140°F	30×3mm/1.18×0.12"	for casting steel
ISU-PT04	7.5MHz	0.8-20mm/0.03-0.80"	Ø5mm/0.20"	<60°C/140°F	—	for thin material
ISU-PT06	7.5MHz	0.7-50mm/0.03-2.00"	Ø8.5mm/0.34"	<60°C/140°F	10×1mm/0.40×0.04"	for thin material
ISU-PT08	5.0MHz	0.8-200mm/0.03-8.00"	Ø10.8mm/0.43"	<60°C/140°F	10×1.2mm/0.40×0.05"	general use
ISU-PT12	5.0MHz	1-250mm/0.04-10.00"	Ø12mm/0.47"	<60°C/140°F	10×1.2mm/0.40×0.05"	general use
ISU-GT13	5.0MHz	2.0-100mm/0.08-4.00"	Ø13mm/0.51"	<350°C/662°F	20×2mm/0.80×0.08"	for high temperature



MODEL ISV-400 VIBRATION TESTER

- Measuring velocity, acceleration, displacement, revolution and vibration frequency
- RS232C output
- Peak function
- Auto power off

Technical specification

Measuring range	acceleration	0.1-200m/s ² (0.3-656ft/s ²) under standard model 20.1-400 m/s ² (0.3-1312ft/s ²) under peak model
	velocity	0.1-200mm/s (0.1-8.0inch/s) under standard model 0.1-400mm/s (0.004-16.0inch/s) under peak model
	displacement	0.001-2.0mm (0.04-80mil) under standard model 0.001-4.0mm (0.04-160mil) under peak model
	revolution	5-9999r/min
	frequency	0.1 to 10KHz
Accuracy	5%	
Power supply	4×1.5V AAA batteries	
Working temperature	0°C~45°C (32°F-113°F)	
Dimension	124×62×30mm	
Weight	120g/4.2oz	

Standard delivery

Main unit	1pc
Probe	1pc
Pointed tip extension	1pc
Ball tip extension	1pc
Magnetic support	1pc
1.5V AAA Battery	4pcs

MODEL ISP-Z3015

ERECT IMAGE PROFILE PROJECTOR



- The image on the projector screen is a positive one, which conforms with the measuring custom

Technical specification

Lens	magnification	10X (standard)	20X (option)	50X (option)	100X (option)
	view field	Ø30mm/1.2"	Ø15mm/0.6"	Ø6mm/0.24"	Ø3mm/0.12"
	working distance	77.7mm/3.06"	44.3mm/1.74"	38.4mm/1.51"	25.3mm/1.00"
	max. workpiece height	90mm/3.5"	90mm/3.5"	90mm/3.5"	90mm/3.5"
Metal table size		340×152mm (13.4×6.0")			
Glass plate size		196×96mm (7.7×3.8")			
X-Y-Z (focus) travel		150×50×90mm (5.9×2.0×3.5")			
Measuring unit of X,Y axis		build-in linear scales, resolution: 0.5µm/20µin measuring accuracy: $\leq(4+L/25)\mu\text{m}$ (L is the measuring length in mm)			
Projector screen		diameter: Ø312mm/12.3", effective range>Ø300mm/11.8" (with cross lines) screen rotary range: 0°~360° rotary resolution: 1' or 0.01°			
Data processing system		multi-function data processing system, to gather the data and measure the point, line, circle, angle and distance, RS232 data output			
Illumination		24V/150W halogen bulb, vertical illumination with half-reflection mirror			
Power supply		AC 220V 50Hz (standard) AC 110V 60Hz (option)			
Proposed stand for unit		load>250kg/550lbs, dimension: 800(L)×550(W)×650(H)mm			
Dimension (L×W×H)		770×550×1100mm			
Weight		130kg/286lbs			

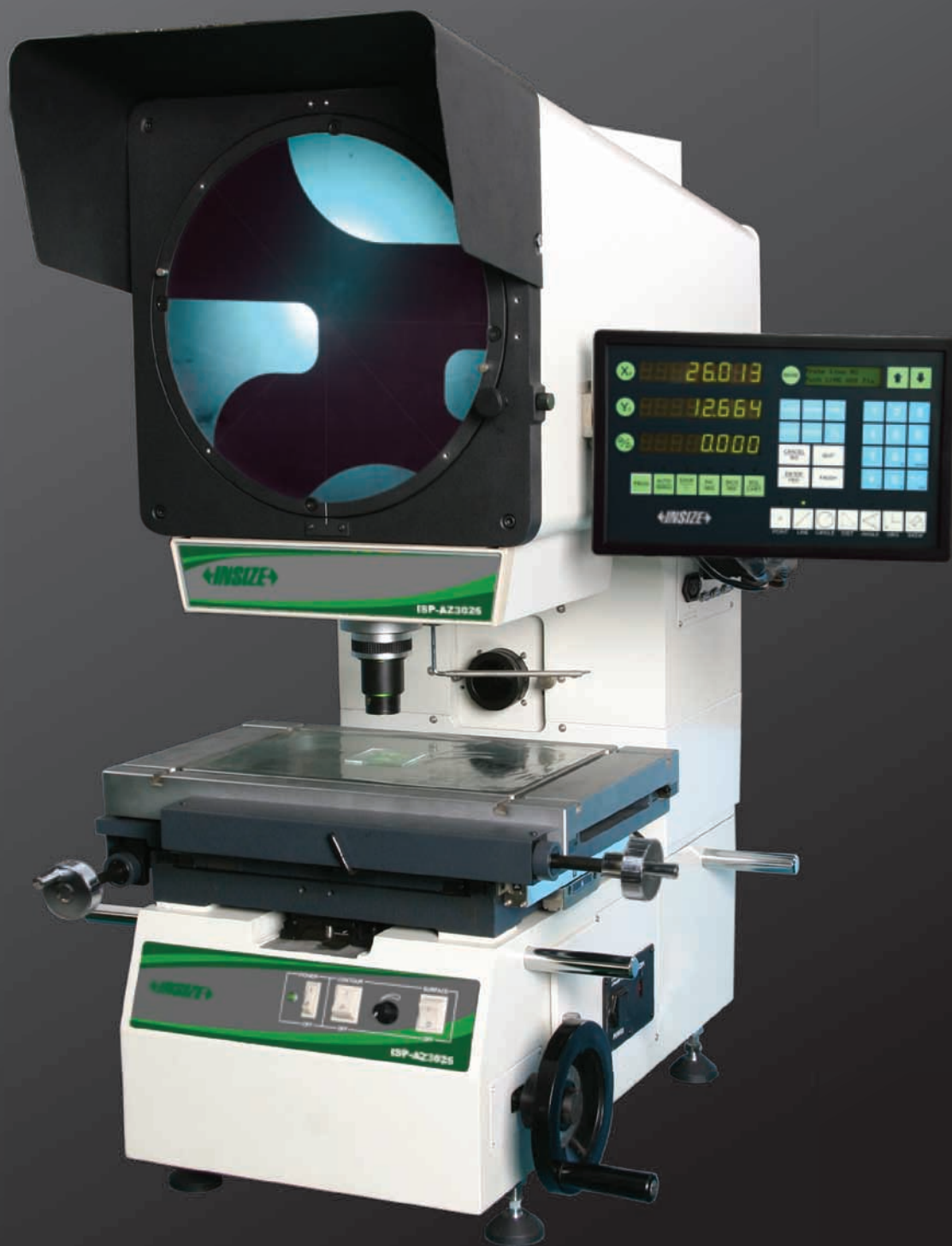
Standard delivery

Main unit	1pc
10X lens with half-reflection mirror	1pc
Oblique illuminator mirror for 10X lens	1pc
Overlay chart clips	4pcs
Foot-switch	1pc
Fuse (4A)	5pcs
Halogen bulb (24V, 150W)	2pcs
Anti-dust cover	1pc

Optional accessories

20X lens with half-reflection mirror
Oblique illuminator mirror for 20X lens
50X lens with half-reflection mirror
100X lens with half-reflection mirror
Rotary table
Overlay chart
Standard scale
Mini-printer
ISP-M2D measuring software
Edge detector
Holder with clamp
Swivel center support
Blue and green filter
V-block with clamp

MODEL ISP-AZ3025
ERECT IMAGE PROFILE PROJECTOR



- The image on the projector screen is a positive one, which conforms with the measuring custom
- Adjust the focus by ascending and descending the project head, the table doesn't ascend or descend
- Maximum workpiece weight 50kg/110lbs

Technical specification

Lens	magnification	10X (standard)	20X (option)	50X (option)	100X (option)
	view field	Ø30mm/1.2"	Ø15mm/0.6"	Ø6mm/0.24"	Ø3mm/0.12"
	working distance	77.7mm/3.06"	44.3mm/1.74"	38.4mm/1.51"	25.3mm/1.00"
	max. workpiece height	100mm/4.0"	100mm/4.0"	100mm/4.0"	100mm/4.0"
Metal table size		450×280mm (17.7×11.0")			
Glass plate size		306×196mm (12.0×7.7")			
X-Y-Z (focus) travel		250×150×100mm (9.8×5.9×3.9")			
Measuring unit of X,Y axis		build-in linear scales, resolution: 0.5µm/20µin measuring accuracy: $\leq(3+L/75)\mu\text{m}$ (L is the measuring length in mm)			
Projector screen		diameter: Ø312mm/12.3", effective range>Ø300mm/11.8" (with cross lines) screen rotary range: 0°~360° rotary resolution: 1' or 0.01°			
Data processing system		multi-function data processing system, to gather data and measure the point, line, circle, angle and distance, RS232 data output			
Illumination		24V/150W halogen bulb, vertical illumination with half-reflection mirror			
Power supply		AC 220V 50Hz (standard) AC 110V 60Hz (option)			
Proposed stand for unit		load>250kg/550lbs, dimension: 800(L)×550(W)×650(H)mm			
Dimension (L×W×H)		810×780×1100mm			
Weight		180kg/396lbs			

Standard delivery

Main unit	1pc
10X lens with half-reflection mirror	1pc
Oblique illuminator mirror for 10X lens	1pc
Overlay chart clips	4pcs
Foot-switch	1pc
Fuse (4A)	5pcs
Halogen bulb (24V, 150W)	2pcs
Anti-dust cover	1pc

Optional accessories

20X lens with half-reflection mirror
Oblique illuminator mirror for 20X lens
50X lens with half-reflection mirror
100X lens with half-reflection mirror
Rotary table
Overlay chart
Standard scale
Mini-printer
ISP-M2D measuring software
Edge detector
Swivel center support
Blue and green filter

MODEL ISP-W3020
HORIZONTAL PROFILE PROJECTOR



Technical specification

Lens	magnification	10X (standard)	20X (option)	50X (option)	100X (option)
	view field	Ø30mm/1.2"	Ø15mm/0.6"	Ø6mm/0.24"	Ø3mm/0.12"
	working distance	77.7mm/3.06"	44.3mm/1.74"	38.4mm/1.51"	25.3mm/1.00"
Table size		400×150mm(15.7×5.9")			
Table turning range		±15°			
X-Z-Y (focus) travel		200×100×75mm(7.9×3.9×2.9")			
Measuring unit of X, Z axis		build-in linear scales, resolution: 0.5µm/20µin measuring accuracy: $\leq(4+L/25)\mu\text{m}$ (L is the measuring length in mm)			
Projector screen		diameter: Ø300mm/12" screen rotary range: 0°~360° rotary resolution: 1' or 0.01°			
Data processing system		multi-function data processing system, to gather data and measure the point, line, circle, angle and distance			
Illumination		transmission: 24V/150W halogen bulb reflection: 12V/150W halogen bulb (with two fibers)			
Power supply		AC 220V 50Hz (standard) AC 110V 60Hz (option)			
Mini-printer		build-in			
Proposed stand for unit		load>350kg/770lbs, dimension: 1100(L)×550(W)×500(H)mm			
Dimension (L×W×H)		1090×830×1010mm			
Weight		160kg/352lbs			

Standard delivery

Main unit	1pc
10X lens	1pc
Overlay chart clips	4pcs
Foot-switch	1pc
Fuse (4A)	5pcs
Halogen bulb (24V, 150W)	2pcs
Halogen bulb (12V, 150W)	1pc
Anti-dust cover	1pc

Optional accessories

20X lens
50X lens
100X lens
ISP-M2D measuring software
Edge detector
Overlay chart
Blue or green filter
Rotary table
Swivel center support
Standard scale

MODEL ISP-W4025

HORIZONTAL PROFILE PROJECTOR



Technical specification

Lens	magnification	5X (option)	10X (standard)	20X (option)	50X (option)	100X (option)
	view field	Ø80mm/3.2"	Ø40mm/1.6"	Ø20mm/0.8"	Ø8mm/0.31"	Ø4mm/0.16"
	working distance	93.7mm/3.69"	103.9mm/4.09"	95.1mm/3.74"	65.7mm/2.59"	35.0mm/1.38"
Table size		400×200mm (15.7×7.9")				
Table turning range		±15°				
X-Z-Y (focus) travel		250×150×100mm (9.8×5.9×3.9")				
Measuring unit of X, Z axis		build-in linear scales, resolution: 0.5µm/20µin measuring accuracy: $\leq(4+L/25)\mu\text{m}$ (L is the measuring length in mm)				
Projector screen		diameter: Ø400mm/15.7" screen rotary range: 0°~360° rotary resolution: 1' or 0.01°				
Data processing system		multi-function data processing system, to gather data and measure the point, line, circle, angle and distance				
Illumination		transmission: 24V/150W halogen bulb reflection: 12V/150W halogen bulb (with two fibers)				
Power supply		AC 220V 50Hz (standard) AC 110V 60Hz (option)				
Mini-printer		build-in				
Proposed stand for unit		load>350kg/770lbs, dimension: 1100(L)×550(W)×500(H)mm				
Dimension(L×W×H)		1215×646×1210mm				
Weight		240kg/528lbs				

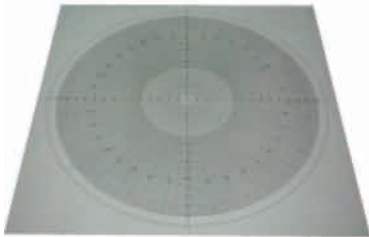
Standard delivery

Main unit	1pc
10X lens	1pc
Fuse (4A)	5pcs
Halogen bulb (24V, 150W)	2pcs
Halogen bulb (12V, 150W)	1pc
Anti-dust cover	1pc

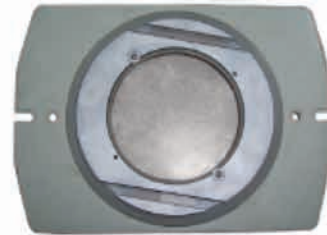
Optional accessories

5X lens
20X lens
50X lens
100X lens
ISP-M2D measuring software
Edge detector
Blue or green filter
Rotary table
Standard scale

ACCESSORY FOR PROFILE PROJECTOR



OVERLAY CHART



ROTARY TABLE



LENS



EDGE DETECTOR



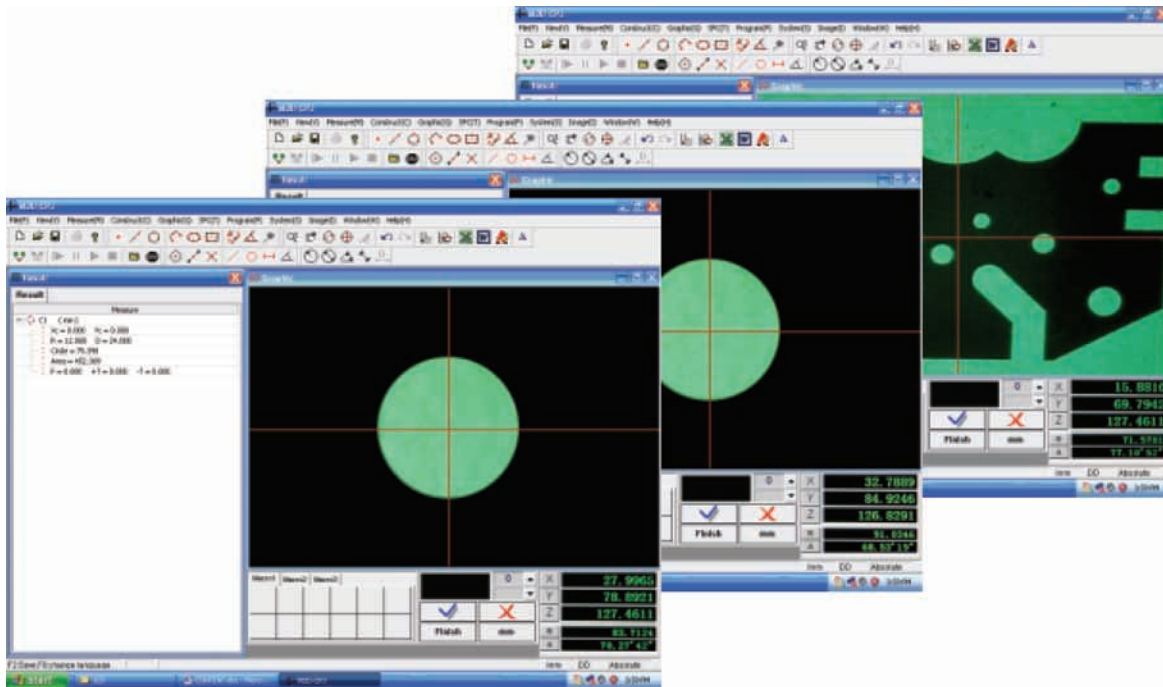
V-BLOCK WITH CLAMP



HOLDER WITH CLAMP



SWIVEL CENTER SUPPORT



MODEL ISP-M2D MEASURING SOFTWARE

- For profile projectors
- Acquisition functions: dots, lines, circulars and arcs
- Construction functions: construct the dots acquired to form the straight line, the circular and the arc
- Combined computing functions:
 - The combination calculation between "dot" and "dot" gives their dot distance and midpoint coordinate
 - The combination calculation between "dot and line" gives their dot line distance
 - The combination calculation between "straight line and straight line for their crossing" gives their intersecting point coordinate and their included angle
 - The combination calculation between "straight line and straight line for their centering" gives the central line information for the two lines
 - The combination calculation between "circular and circular" gives the information of the crossing points and the center distance of the circulars
 - The combination calculation between "circular and straight" gives the information of their crossing points and the distance from the center of the circular to the line
- Functions for the treatment of the shape and location tolerance:
 - Measurement of the roundness between circular and arc
 - Measurement of linearity
 - Measurement of axiality
 - Measurement of symmetry
 - Measurement of location
- Exchange of the coordinate system:
 - The coordinate transition between the rectangular coordinate and the pole coordinate
 - Establish the new coordinate and set the coordinate straight
- Data output: outputting to AUTOCAD, EXCEL and WORD to conduct further data processing

MODEL ISV-T370

TOUCH SCREEN VIDEO MEASURING SYSTEM



- Easy operation with touch screen
- The position of objective is adjusted for focus, which allows the large load on the table

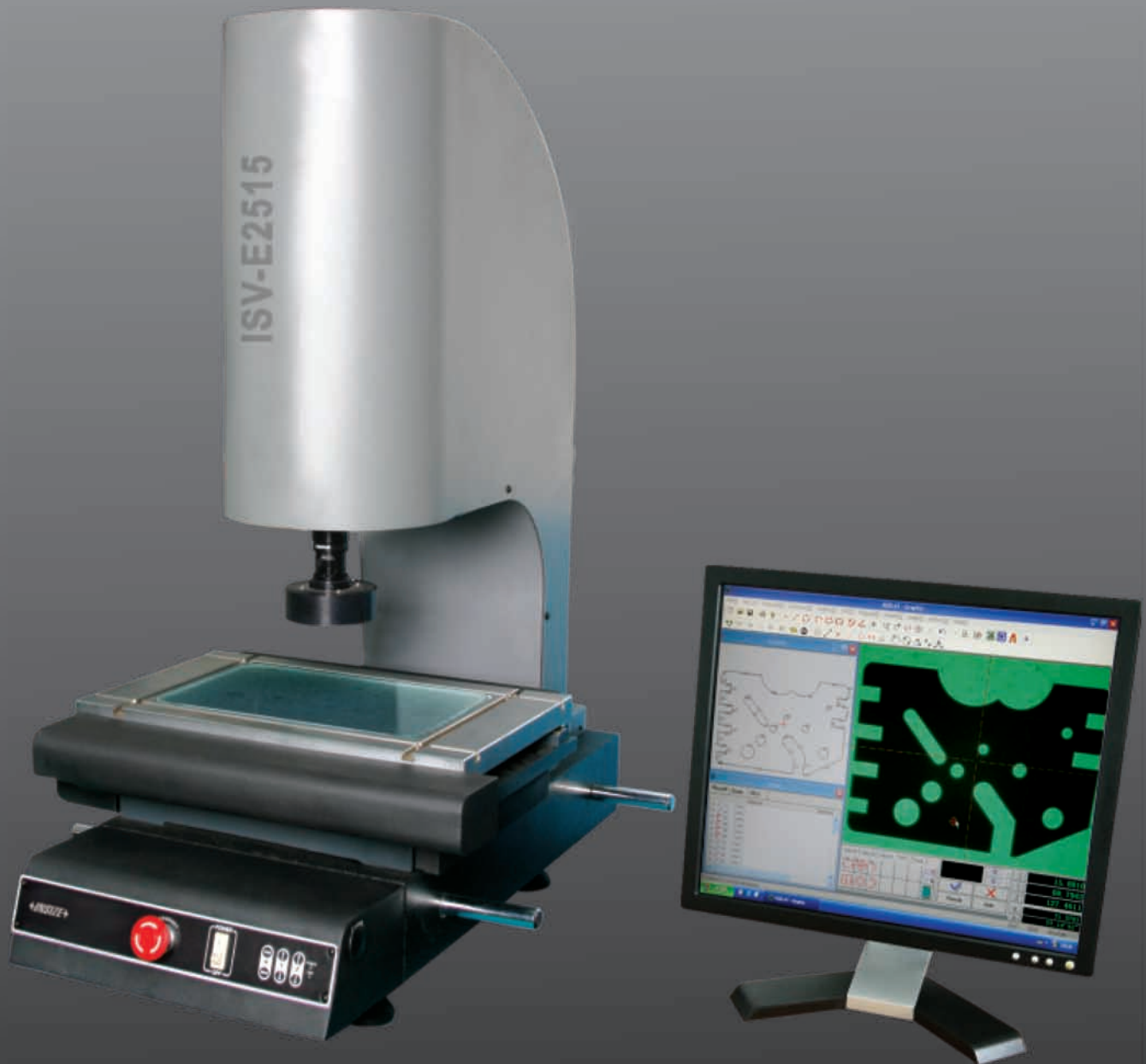
Technical specification

Table	metal table size	370×250mm (14.7×9.8")
	glass table size	240×140mm (9.4×5.5")
	X-Y travel	200×100mm (7.9×3.9")
	resolution	1μm/40μin
	accuracy	(3+L/200)μm L is overall measuring length in mm
	max. load	20kg/44lbs
Objective	magnification	0.7-4.5X
	focus length	150mm/5.9"
	working distance	95mm/3.7"
Total magnification	28X-180X	
Screen	17" touch screen	
CCD	0.43M pixel	
Illumination	incident and transmitted light, adjustable brightness	
Data output	USB	
Power supply	220V/50Hz (standard)	
	110V/60Hz (option)	

Standard delivery

Main unit	1pc
Tool box base	1pc
Measuring software CD	1pc
Software dog (USB)	1pc
Touch screen driver CD	1pc
Video card driver CD	1pc
Calibration card	1pc
Positioning clay	1pc
Transportation handle	4pcs
Dust cover	1pc
Adjustable foot	4pcs

CNC VIDEO MEASURING SYSTEM



- Motorized position locating with high accuracy at high speed
- With granite base

Technical specification

Model	ISV-E2515	ISV-E3020	ISV-E4030	
Table	metal table size	450×280mm (17.7×11.0")	500×330mm (19.7×13.0")	606×466mm (23.9×18.3")
	glass plate size	306×196mm (12.0×7.7")	350×250mm (13.8×9.8")	450×350mm (17.7×13.8")
	X-Y travel	220×120mm (8.7×4.7")	270×170mm (10.6×6.7")	370×270mm (14.6×10.6")
	Z travel	150mm/5.9"		
	resolution of X, Y, Z axis	0.5µm/20µin		
	accuracy of X, Y axis	≤(3+L/75)µm (L is the measuring length in mm)		
Motor speed	X,Y<100mm/s, Z<60mm/s			
Camera	1/2" color CCD			
Objective	0.7X - 4.5X			
Illumination	adjustable LED, reflection and transmission			
Power supply	AC 220V 50Hz(standard) AC 110V 60Hz(option)			
Proposed stand for unit	load>350kg/770lbs, dimension: 1000(L)×600(W)×500(H)mm			
Dimension L×W×H(mm)	760×600×900	760×600×900	970×670×940	
Weight	146kg/321lbs	168kg/370lbs	266kg/585lbs	

	Total magnification	View field	Working distance
With 0.5X auxiliary objective (option)	11.8X - 74X	22-3.4mm (0.87-0.13")	175mm/6.9"
Without auxiliary objective (standard)	23.5X - 148X	11.1-1.7mm (0.44-0.07")	92mm/3.6"
With 2X auxiliary objective (option)	47X - 296X	5.5-0.9mm (0.22-0.04")	36mm/1.4"

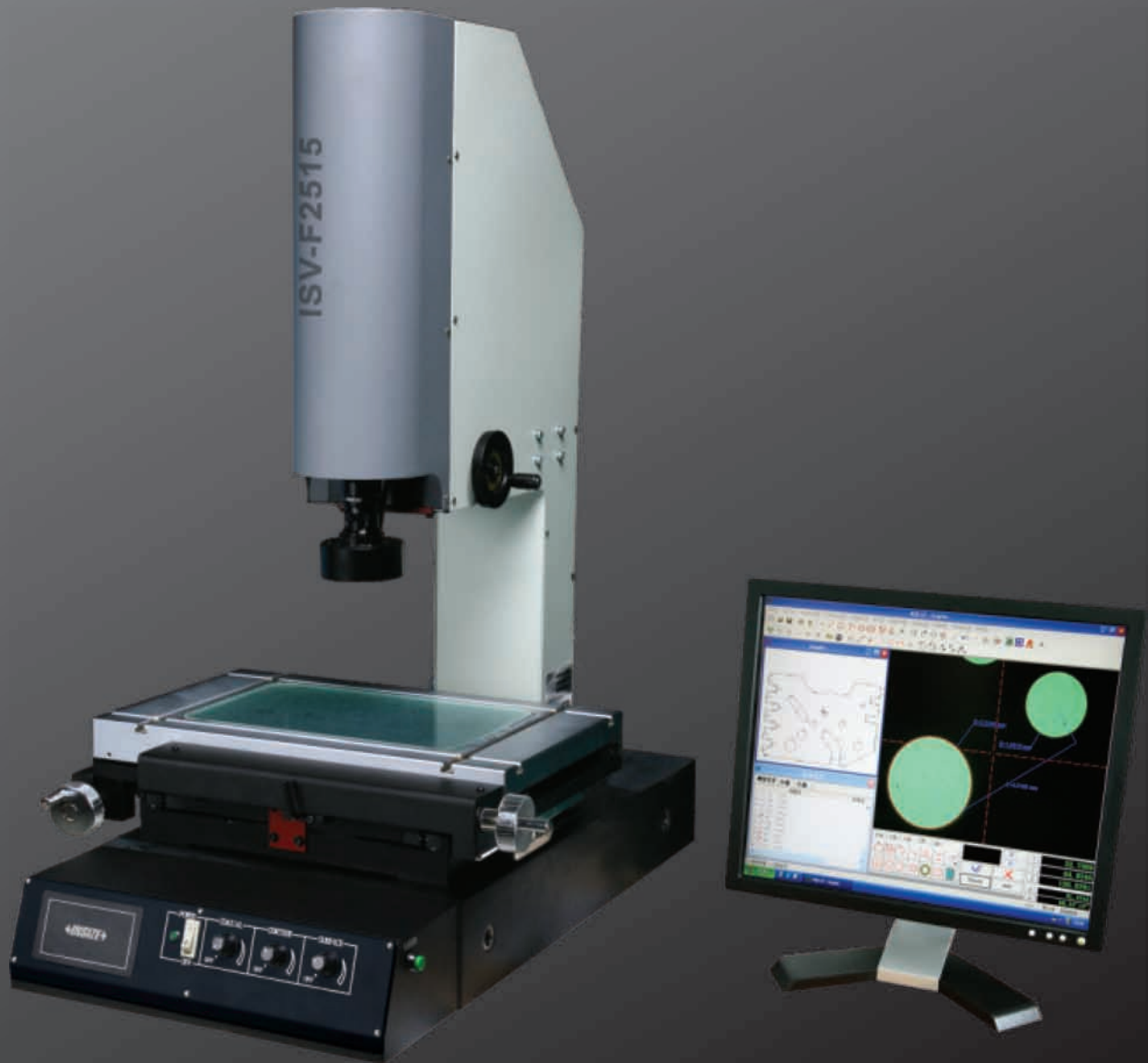
Standard delivery

Main unit	1pc
Computer	1pc
Software CD	1pc
Software encrypt lock	1pc
Video card	1pc
USB cable	1pc
USB adaptor	1pc
Standard block	1pc
Foot-switch	1pc
Fuse	5pcs
Adjustable feet	4pcs
Anti-dust cover	1pc

Optional accessories

Mini printer
Auxiliary objective 0.5X
Auxiliary objective 2X

VIDEO MEASURING SYSTEM



Technical specification

Model	ISV- F1510	ISV-F2010	ISV-F2515	ISV-F3020	ISV-F4030	
Table	metal table size	354×228mm (13.9×9.0")	404×228mm (15.9×9.0")	450×280mm (17.7×11.0")	500×330mm (19.7×13.0")	606×466mm (23.9×18.3")
	glass plate size	210×160mm (8.3×6.3")	260×160mm (10.2×6.3")	300×198mm (11.8×7.8")	350×280mm (13.8×11.0")	450×350mm (17.7×13.8")
	X-Y travel	150×100mm (5.9×3.9")	200×100mm (7.9×3.9")	250×150mm (9.8×5.9")	300×200mm (11.8×7.9")	400×300mm (15.7×11.8")
	Z travel	150mm/5.9"				
	resolution of X, Y, Z axis	0.5µm/20µin				
	accuracy of X, Y axis	≤(3+L/75)µm (L is the measuring length in mm)				
Camera	1/2" color CCD					
Objective	0.7 X - 4.5X					
Illumination	adjustable LED, reflection and transmission					
Proposed stand for unit	load>350kg/770lbs, dimension: 1000(L) ×600(W) ×500(H)mm					
Power supply	AC 220V 50Hz(standard) AC 110V 60Hz(option)					
Dimension: L×W×H (mm)	540×560×850		760×600×900		970×670×940	
Weight	100kg/220lbs	110kg/242lbs	120kg/264lbs	140kg/308lbs	240kg/528lbs	

	Total magnification	View field	Working distance
With 0.5X auxiliary objective (option)	11.8X - 74X	22-3.4mm (0.87-0.13")	175mm/6.9"
Without auxiliary objective (standard)	23.5X - 148X	11.1-1.7mm (0.44-0.07")	92mm/3.6"
With 2X auxiliary objective (option)	47X - 296X	5.5-0.9mm (0.22-0.04")	36mm/1.4"

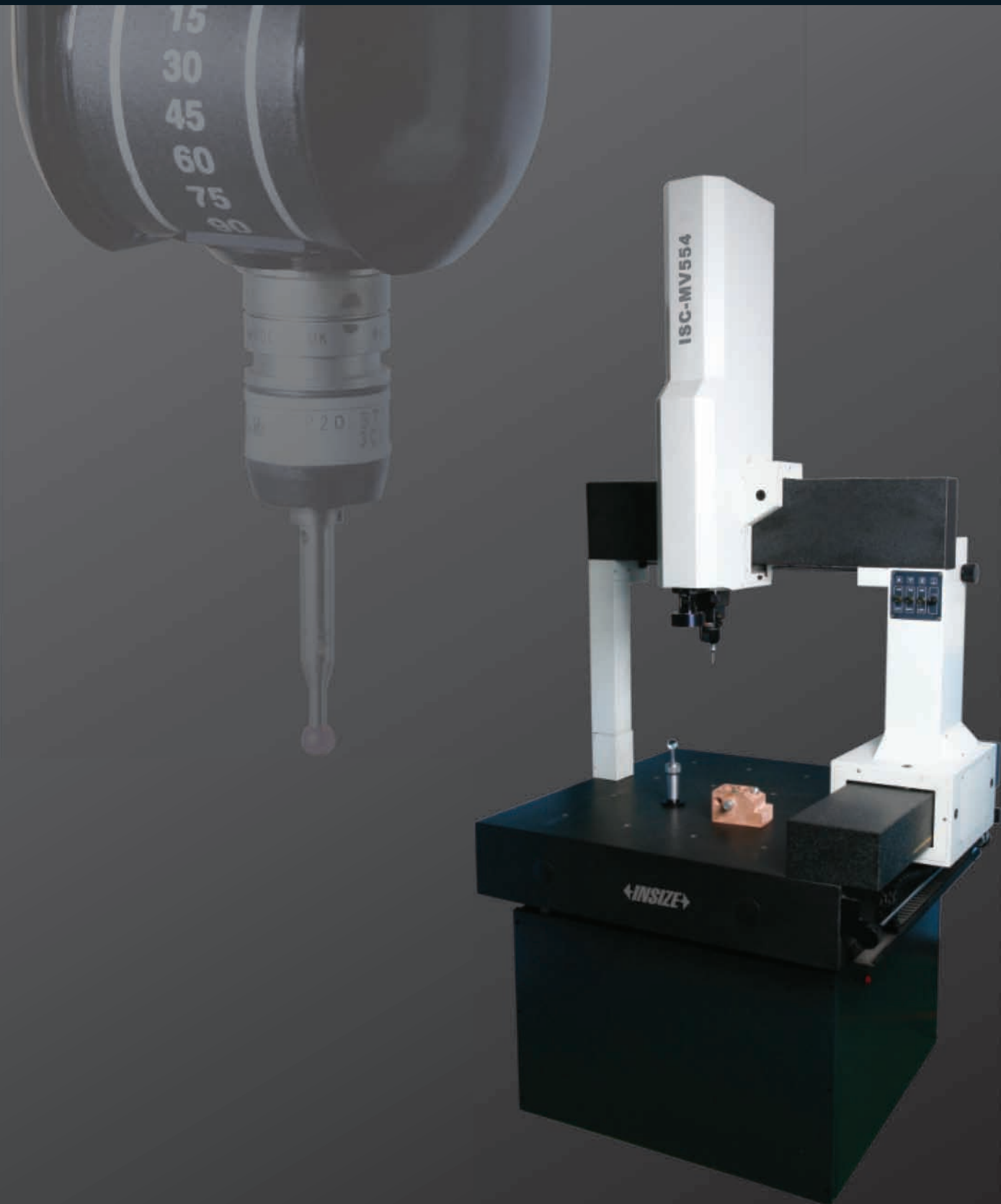
Standard delivery

Main unit	1pc
Computer	1pc
Software CD	1pc
Software encrypt lock	1pc
Video card	1pc
USB cable	1pc
USB adaptor	1pc
Standard block	1pc
Foot-switch	1pc
Fuse	5pcs
Adjustable feet	4pcs
Anti-dust cover	1pc

Optional accessories

Mini printer
Auxiliary objective 0.5X
Auxiliary objective 2X

MODEL ISC-MV554
MANUAL COORDINATE MEASURING MACHINE



Technical specification

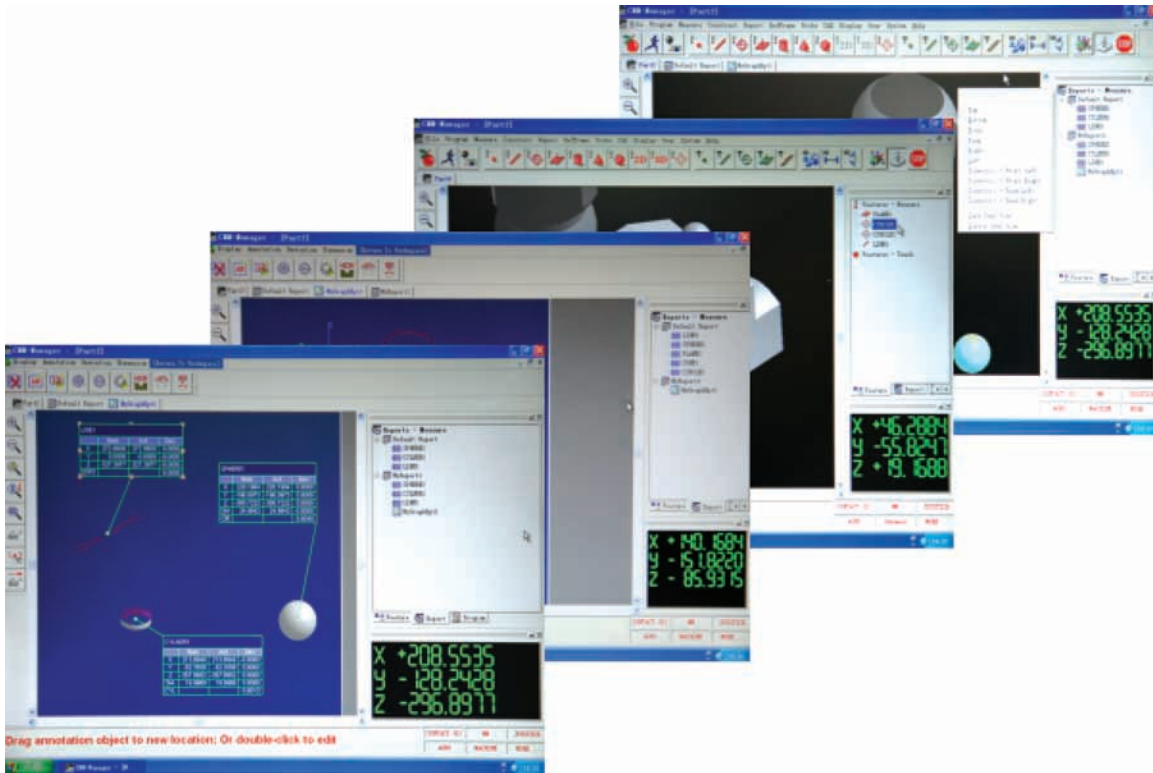
Operation	manual
Structure	moving bridge
Guide method	air bearing
Measuring range	X=500mm/19.7", Y=500mm/19.7", Z=400mm/15.7"
Accuracy	single axis MPEE1=(3.0+L/250)μm (L is the measuring length in mm) space MPEE=(4+L/250)μm (L is the measuring length in mm)
Digital measuring system	RENISHAW
Resolution	0.5μm/20μin
Max. measuring speed	300mm/s (11.8inch/s)
Probing system	RENISHAW
Max. workpiece weight	200kg/440lbs
Power supply	AC 220V 50Hz (standard) AC 110V 60Hz (option)
Air supply	≥0.5Mpa
Working condition	temperature: (20±2)°C/(68±4)°F humidity: 40%~70%
Dimension	1000×1100×2200mm
Weight	700kg/1540lbs

Standard delivery

Main unit		1pc
Probing system	MH20i with MSI shank and TP 20 module	1pc
	extension: SE4	1pc
	extension: SE5	1pc
	styli: PS9R	1pc
	styli: PS8R	1pc
	styli: PS1R	1pc
ISC-CMS software		1pc
Calibration ball set		1pc
Fuse		3pcs
Handle		4pcs
Adjustable feet		11pcs

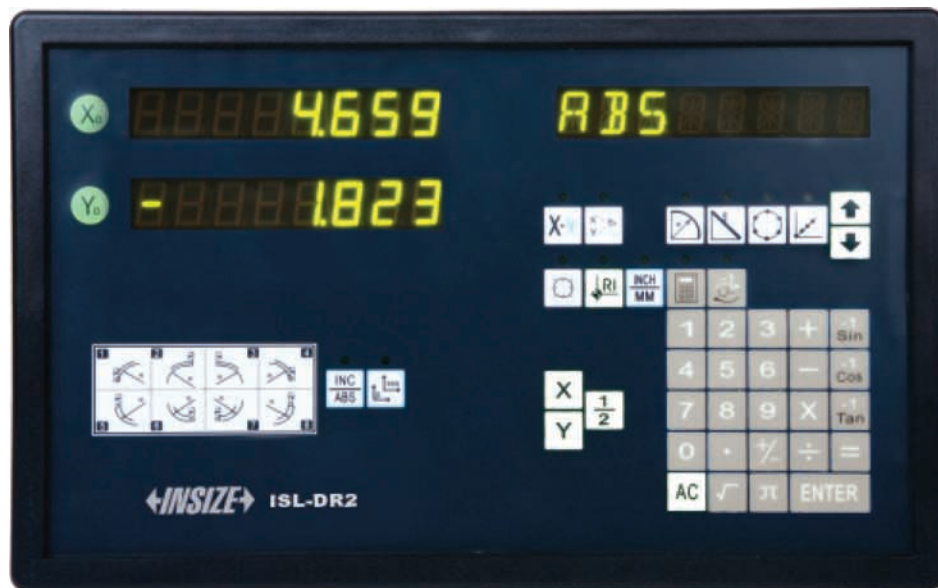
Optional accessories

Computer	
Probing system: PH10T, center SC2, knuckle SK2, extension SE18, styli PS17R, PS27R, PS49R, PS20R, PS3R, PS68R	



MODEL ISC-CMS SOFTWARE

- For model ISC-MV554 manual coordinate measuring machine
- It employs various standard machine calibrating and probing system to realize the oriental and calibration of the equal radius probing ball
- Realize the establishing saving interchanging and transforming between various coordinate
- Detect and commutate the characteristics parameter (point, line, plane, circle etc) by jointing the points. According to the special need of users it can be added with other detecting functions
- Construct new elements or computation dimension (distance, angle) of workpieces by 8 different ways (assemblage, parallel, verticality, intersection, projection, symmetry, image, statistics) according to the detecting outcome
- Detect various shape and position errors of workpieces
- Detecting outcome can be displayed or printed by arranging in column of graph and also can be transformed as AutoCAD, Excel, Word file to satisfy different need of users
- Calibrate the systematic errors of coordinate accuracy
- Carry out the temperature compensation under constant temperature
- The guide window can tell operator the measuring steps and current measuring position
- Improve the measuring efficiency by the hot key



DIGITAL READOUT

- High speed count 5m/s (197 inch/s)
- Multiple memories
- Zero point reference
- Basic functions: zero set, preset, inch/mm conversion, ABS/INC conversion, 1000 groups coordinates display, "1/2" function, linear error compensation

Technical specification

Model	ISL-DR2	ISL-DR3	ISL-DRE
Application	two-axis	three-axis	EDM
Scale input port	2	3	3
Resolution	0.1µm/4µin, 0.2µm/8µin, 0.5µm/20µin, 1µm/40µin, 2µm/80µin, 5µm/200µin, 10µm/400µin		
Power supply	AC 90~240V		
Dimension(mm)	295×185×45		
Weight	1.45kg/3.2lbs		

Standard delivery

Main unit	1pc
Mounting bracket	1pc
RS232 cable	1pc
Software CD for RS232	1pc



LINEAR SCALE

Technical specification

Model	Resolution	Speed (m/min)	Section size A×B
ISL-A1	1μm/40μin	50	21×61.5mm (0.83×2.42")
ISL-A5	5μm/200μin	90	21×61.5mm (0.83×2.42")
ISL-A05	0.5μm/20μin	30	21×61.5mm (0.83×2.42")
ISL-B1	1μm/40μin	60	29×66.8mm (1.14×2.63")
ISL-B5	5μm/200μin	60	29×66.8mm (1.14×2.63")
Scale grating pitch	20μm		
Scale reference point pitch	50mm		
Accuracy	±(5+5L/1000)μm L is the effective range in mm		
Working temperature	0° - 40°C (32°F-104°F)		

Standard delivery

Main unit	1pc
'L' shape support	1pc
Anti-dust cover	1pc
Flat base	1pc (for scales≥1500mm)
Fixing screws	1set



Code					Effective range
ISL-A1	ISL-A5	ISL-A05	ISL-B1	ISL-B5	
ISL-A1-50	ISL-A5-50	ISL-A05-50	ISL-B1-50	ISL-B5-50	50mm/2"
ISL-A1-100	ISL-A5-100	ISL-A05-100	ISL-B1-100	ISL-B5-100	100mm/4"
ISL-A1-150	ISL-A5-150	ISL-A05-150	ISL-B1-150	ISL-B5-150	150mm/6"
ISL-A1-200	ISL-A5-200	ISL-A05-200	ISL-B1-200	ISL-B5-200	200mm/8"
ISL-A1-250	ISL-A5-250	ISL-A05-250	ISL-B1-250	ISL-B5-250	250mm/10"
ISL-A1-300	ISL-A5-300	ISL-A05-300	ISL-B1-300	ISL-B5-300	300mm/12"
ISL-A1-350	ISL-A5-350	ISL-A05-350	ISL-B1-350	ISL-B5-350	350mm/14"
ISL-A1-400	ISL-A5-400	ISL-A05-400	ISL-B1-400	ISL-B5-400	400mm/16"
ISL-A1-450	ISL-A5-450	ISL-A05-450	ISL-B1-450	ISL-B5-450	450mm/18"
ISL-A1-500	ISL-A5-500	ISL-A05-500	ISL-B1-500	ISL-B5-500	500mm/20"
ISL-A1-550	ISL-A5-550	ISL-A05-550	ISL-B1-550	ISL-B5-550	550mm/22"
ISL-A1-600	ISL-A5-600	ISL-A05-600	ISL-B1-600	ISL-B5-600	600mm/24"
ISL-A1-650	ISL-A5-650	ISL-A05-650	ISL-B1-650	ISL-B5-650	650mm/26"
ISL-A1-700	ISL-A5-700	ISL-A05-700	ISL-B1-700	ISL-B5-700	700mm/28"
ISL-A1-750	ISL-A5-750	ISL-A05-750	ISL-B1-750	ISL-B5-750	750mm/30"
ISL-A1-800	ISL-A5-800	ISL-A05-800	ISL-B1-800	ISL-B5-800	800mm/32"
ISL-A1-850	ISL-A5-850	ISL-A05-850	ISL-B1-850	ISL-B5-850	850mm/34"
ISL-A1-900	ISL-A5-900	ISL-A05-900	ISL-B1-900	ISL-B5-900	900mm/36"
ISL-A1-950	ISL-A5-950	ISL-A05-950	ISL-B1-950	ISL-B5-950	950mm/38"
ISL-A1-1000	ISL-A5-1000	ISL-A05-1000	ISL-B1-1000	ISL-B5-1000	1000mm/40"
			ISL-B1-1100	ISL-B5-1100	1100mm/44"
			ISL-B1-1200	ISL-B5-1200	1200mm/48"
			ISL-B1-1300	ISL-B5-1300	1300mm/52"
			ISL-B1-1400	ISL-B5-1400	1400mm/56"
			ISL-B1-1500	ISL-B5-1500	1500mm/60"
			ISL-B1-1600	ISL-B5-1600	1600mm/64"
			ISL-B1-1700	ISL-B5-1700	1700mm/68"
			ISL-B1-1800	ISL-B5-1800	1800mm/72"
			ISL-B1-1900	ISL-B5-1900	1900mm/76"
			ISL-B1-2000	ISL-B5-2000	2000mm/80"
			ISL-B1-2200	ISL-B5-2200	2200mm/88"
			ISL-B1-2400	ISL-B5-2400	2400mm/96"
			ISL-B1-2600	ISL-B5-2600	2600mm/104"
			ISL-B1-2800	ISL-B5-2800	2800mm/112"
			ISL-B1-3000	ISL-B5-3000	3000mm/120"



←INSIZE→

MODEL ISM-PM100 PORTABLE MEASURING MICROSCOPE

Technical specification

Eyepiece	10X with graduation 0.1mm
Objective	10X
Working distance	6.93mm/0.273"
Focus range	30mm/1.2"
Diameter of viewing field in eyepiece	Ø18mm/0.7"
Measuring resolution	0.01mm
Diameter of base	Ø63mm/2.5"
Illumination	pen light
Height	210mm/8.3"
Weight	0.65kg/1.43lbs

Standard delivery

Main unit	1pc
Pen light	1pc
Pen light holder	1pc
Wrench	1pc
Battery	2pcs

MODEL ISM-BDL120

BINOCULAR LCD MEASURING MICROSCOPE

Technical specification

Total magnification	16.5X-114X	
Eyepiece	WF10X	
Display screen	dimension	8.0 inch
	display resolution	640X480
	image reduplication	1X-4X
	video output	synchronized display
	memory card	support SD/MMC
Objective	0.65X-4.5X	
Illumination	multi-purpose LED lighting system	
Working table	diameter	120mm/4.7"
	rotary range	0-360°
	angle resolution	0.2°
	X- axis travel	25mm/1"
	Y- axis travel	25mm/1"
	X-Y travel resolution	1μm/50μin
	measuring accuracy	5μm/200μin
	load	8kg/17.6lbs
Power supply	AC 100-240V/50Hz-60Hz	

Standard delivery

Main unit	1pc
10X eyepiece	1pair
Eyepiece patch	2pcs
Eyepiece micrometer	1pc
0.1mm rule	1pc
Software disc	1pc
Micrometer head	2pcs
SD card	1pc
Round glass plate	1pc
Clincher	2pcs
USB cable	1pc
DC power Cable	1pc
AV connecting wire	1pc
AC/DC adapter	1pc
Wrench	2pcs
Anti-dust cover	1pc

Optional accessories

Frosted glass plate	
0.5X auxiliary objective	
2X auxiliary objective	



- Three types of grid are available
- Applications: using rectangular coordinates to determine length, using rotation disk to determine angle, serves as a microscope





MODEL ISM-DL120 LCD MEASURING MICROSCOPE

- Three types of grid are available on LCD display

Technical specification

Total magnification	18.7-120X	
Display screen	dimension	8.4 inch
	display resolution	800X600
	image reduplication	1X-4X
	video output	synchronized display
	memory card	support SD/MMC
Working table	diameter	120mm/4.7"
	rotary range	0-360°
	angle resolution	0.2°
	X- axis travel	25mm/1"
	Y- axis travel	25mm/1"
	X-Y travel resolution	1µm/50µin
	measuring accuracy	5µm/200µin
load	8kg/17.6lbs	
Working distance	185mm/7.3"	
Objective	0.7X-4.5X	
Illumination	multi-purpose LED lighting system	
Power supply	AC 100-240V/50-60Hz	

Standard delivery

Main unit	1pc
Software disc	1pc
0.1mm rule	1pc
1.0X auxiliary objective	1pc
SD card	1pc
Micrometer head	2pcs
Round glass plate	1pc
Clincher	2pcs
AV connecting cable	1pc
USB cable	1pc
DC power cable	1pc
AC/DC adapter	1pc
Wrench	2pcs
Anti-dust cover	1pc

Optional accessories

Frosted glass plate	
0.5X auxiliary objective	
2X auxiliary objective	

Technical specification

Total magnification	18.67-120X	
Display screen	dimension	8.4inch
	display resolution	640X480
	image reduplication	1X-4X
	video output	synchronized display
	memory card	support SD/MMC
Objective	0.7X-4.5X	
Working distance	100-175mm (3.9-6.9")	
Visual field	8.9-1.3mm (0.35-0.05")	
Illumination	multi-purpose LED lighting system	
Power supply	AC 100-240V/50Hz-60Hz	

Standard delivery

Main unit	1pc
Software disc	1pc
0.1mm rule	1pc
1.0X auxiliary objective	1pc
SD card	1pc
Round glass plate	1pc
Clincher	2pcs
AV connecting cable	1pc
USB cable	1pc

DC power cable	1pc
AC/DC adapter	1pc
Wrench	2pcs
Anti-dust cover	1pc

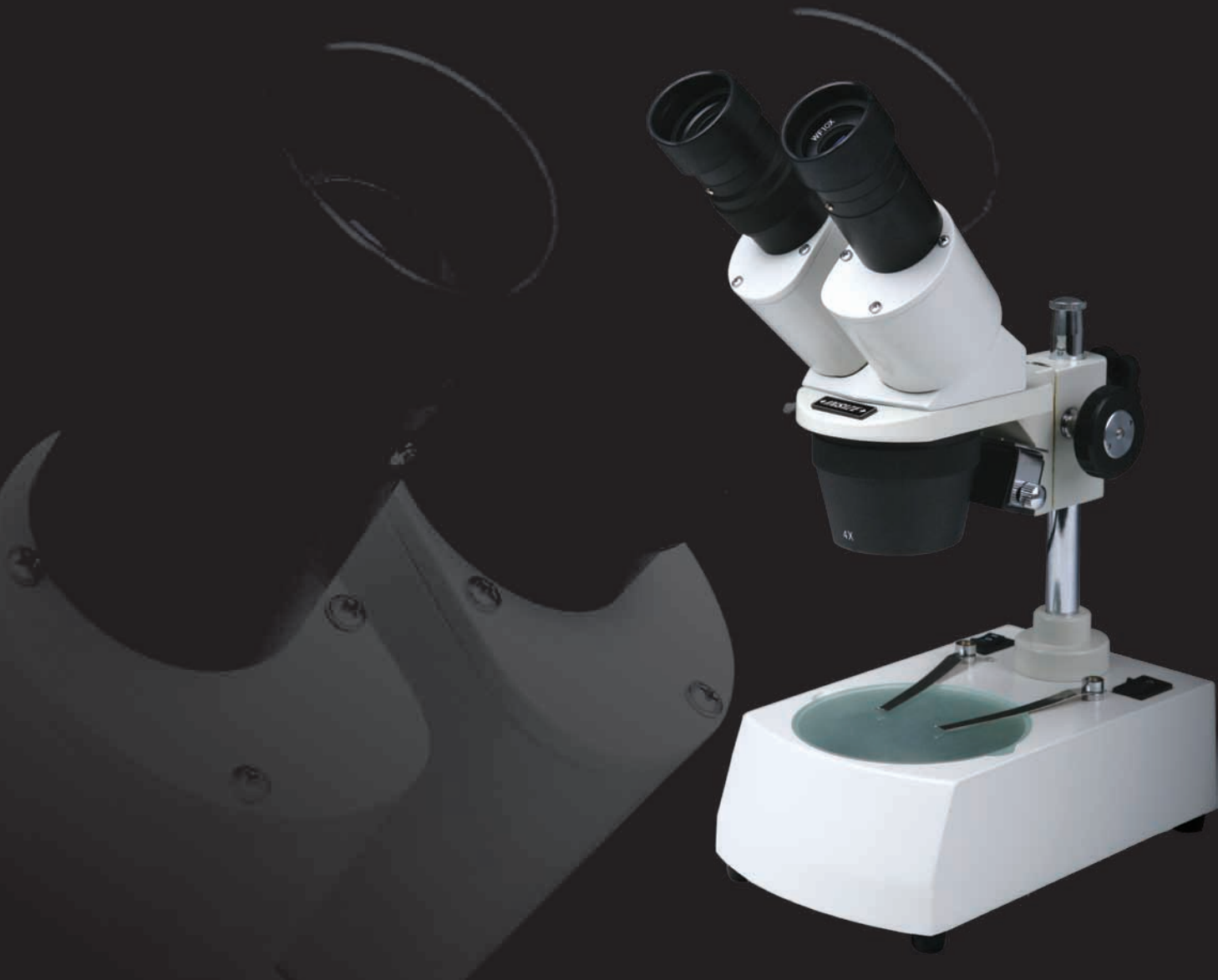
Optional accessories

0.5X auxiliary objective	
2X auxiliary objective	

MODEL ISM-DLC120 LCD MICROSCOPE



←INSIZE→



MODEL ISM-S40 STEREO MICROSCOPE

Technical specification

Eyepiece	WF10X
Objective	2X/4X
Interpupillary distance	55-75mm (2.2-3.0")
Diopter adjustment	±5 diopter
Focus distance	42mm/1.7"
Working distance	57mm/2.2"
Illumination	selectable incident and transmitted light
Power supply	AC 220V 50Hz (standard)
	AC 110V 60Hz (option)

Standard delivery

Main unit	1pc
Spare bulb (12V, 10W)	1pc
Spare fuse	1pc
Eyepiece patch	2pcs
Wrench	2pcs
Black/white plastic plate	1pc
Anti-dust cover	1pc

Optional accessories

Eyepiece	WF5X, WF15X, WF20X
Objective	1X/2X, 1X/3X
Micro-image process software	ISM-MIA
Digital camera	ISM-D300, ISM-D500

MODEL ISM-S10L

LONG WORKING DISTANCE STEREO MICROSCOPE

Technical specification

Eyepiece	10X
Objective	1X
Interpupillary distance	55-75mm (2.3-3.0")
Diopter adjustment	±5 diopter
Working distance	230mm/9.1"
Illumination	incident light
Power supply	AC 220V 50Hz (standard) AC 110V 60Hz (option)

Standard delivery

Main unit	1pc
Bulb (12V, 10W)	1pc
Fuse	1pc
Eyepatch	2pcs
Wrench	1pc
Anti-dust cover	1pc

Optional accessories

Eyepiece	WF5X, WF15X, WF20X
Objective	0.5X
Micro-image process software	ISM-MIA
Digital camera	ISM-D300, ISM-D500





MODEL ISM-ZS45 ZOOM STEREO MICROSCOPE

Technical specification

Eyepiece	WF10X
Objective	0.7X-4.5X
Interpupillary distance	55-75mm (2.2-3.0")
Diopter adjustment	±5 diopter
Focus distance	55mm/2.2"
Working distance	95mm/3.7"
Illumination	selectable incident and transmitted light
Power supply	AC 220V 50Hz (standard) AC 110V 60Hz (option)

Standard delivery

Main unit	1pc
Spare transmitted bulb (6V, 20W)	1pc
Spare incident bulb (6V, 15W)	1pc
Spare fuse	2pcs
Ø42mm/1.7" frosted glass plate with Ø80mm/3.1" steel support	1pc
Ø95mm/3.7" frosted glass plate	1pc
Ø95mm/3.7" black/white plastic plate	1pc
Eyepiece patch	2pcs
Anti-dust cover	1pc

Optional accessories

Trinocular viewing head
Eyepiece WF5X, WF12.5X, WF15X, WF20X, WF25X
Auxiliary objective 0.5X, 0.75X, 1.5X, 2X
Micro-image process software ISM-MIA
Digital camera ISM-D300, ISM-D500



MODEL ISM-ZS80A ZOOM STEREO MICROSCOPE

Technical specification

Eyepiece	WF10X, WF20X
Objective	1X-4X
Interpupillary distance	55-75mm (2.2-3.0")
Focus distance	60mm/2.4"
Working distance	97mm/3.8"
Illumination	selectable incident and transmitted light
Power supply	AC 220V 50Hz (standard) AC 110V 60Hz (option)

Standard delivery

Main unit	1pc
2X auxiliary objective	1pc
Spare transmitted bulb (6V, 20W)	1pc
Spare incident bulb (6V, 15W)	1pc
Eyepiece patch	2pcs
Ø42mm/1.7" frosted glass plate with Ø80mm/3.1" steel support	1pc
Ø95mm/3.7" black/white plastic plate	1pc
Ø95mm/3.7" frosted glass plate	1pc
Anti-dust cover	1pc

Optional accessories

Trinocular viewing head
Eyepiece WF5X, WF15X, WF25X
Auxiliary objective 0.4X, 0.5X, 0.75X, 1.5X
Micro-image process software ISM-MIA
Digital camera ISM-D300, ISM-D500



MODEL ISM-M1000 METALLURGICAL MICROSCOPE

Technical specification

Eyepiece	WF10X			
Objective	PL10X	PL20X	PL40X	PL100X (oil)
Working distance	8.9mm/0.35"	8.7mm/0.34"	3.7mm/0.14"	0.44mm/0.017"
Stage	double layer mechanical stage size 180×150mm/7.1×5.9" travel: 15×15mm/0.6×0.6"			
Interpupillary distance	55-75mm (2.2-3.0")			
Diopter adjustment	±5 diopter			
Illumination	6V/ 20W halogen bulb, adjustable brightness			
Power supply	AC 220V 50Hz (standard) AC 110V 60Hz (option)			

Standard delivery

Main unit	1pc
Halogen bulb (6V, 20W)	1pc
Filters (blue, green, yellow)	1pc each
Anti-dust cover	1pc

Optional accessories

Eyepiece	WF16X, dividing 10X (0.1mm/div.)
Digital camera	ISM-D300, ISM-D500
Polarizer	

MODEL ISM-M600 METALLURGICAL MICROSCOPE

Technical specification

Eyeiece	WF10X
Objective	PL5X, PL10X, PL20X, PL40X, PL60X
Pupil distance	53-75mm (2.1-3.0")
Fine focus adjustment	0.002mm graduation
Illumination	incident light: brightness control, with filters (blue, green, frosted) and polarizer, viewing field adjustment, diaphragm adjustment
	transmitted light: brightness control, with filters (blue, green, frosted), polarizer and condenser
Stage	double layer mechanical with sample clamp
	size: 160×140mm (6.3×5.5")
	travel: 75×50mm (3.0×2.0") with 0.1mm graduation
Power supply	AC 220V 50Hz (standard)
	AC 110V 60Hz (option)

Standard delivery

Main unit	1pc	Spare bulb	2pcs
Trinocular viewing head with polarizer	1pc	Anti-dust cover	1pc
Transmitted light house	1pc		
Transmitted light filter (blue, green, frosted)	1pc each		
Transmitted light polarizer	1pc		
Transmitted light condenser	1pc		
Reflected light house	1pc		
Reflected polarizer	1pc		
Spare fuse	1pc		

Optional accessories

Eyeiece	WF16X, dividing 10X (0.1mm/div.)
Objective	PL50X, PL80X, PL100X
Digital camera	ISM-D300, ISM-D500



←INSIZE→



DIGITAL CAMERA

- Very convenient to use, just insert it into eyepiece tube or top tube of trinocular head
- The visual field observed from the camera is up to 90% viewing field from the eyepiece
- By USB 2.0, getting real-time, non-compressing video data and image capturing directly
- High sensitivity feature suitable for wide range of accessories such as dark field, phase contrast, epi-fluorescence and so on
- Supplied with software

Technical specification

Model	ISM-D300	ISM-D500
Sensor	1/2" CMOS	1/2.5" CMOS
Valid pixel	2048×1536 (3M pixel)	2592×1944 (5M pixel)
Pixel size	3.2×3.2μm	2.2×2.2μm
Digital output	24-bit (color)	
Frame rate	2048×1536	5f/s
	1600×1200	20f/s
	1280×1024	30f/s
	1028×768	14f/s
	800×600	16f/s
	640×480	24f/s
Exposure	manual/auto exposure time adjustable	
SNR	45dB	41dB
Dynamic range	62dB	
Power supply	by USB2.0	
Dimension (L×W×H)	85×68×43 (mm)	
Weight	400g/14.1oz	

Standard delivery

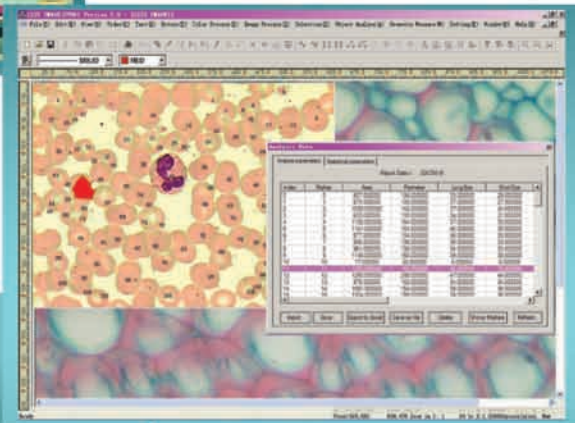
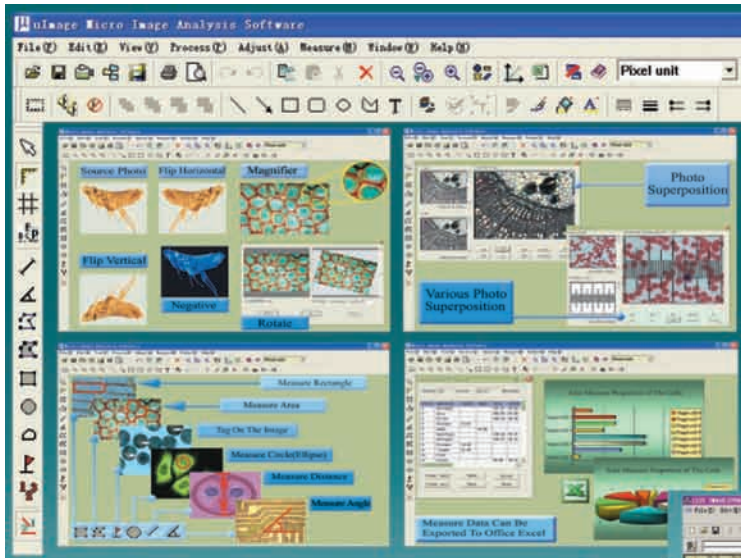
Main body	1pc
Medium adapter 0.45X	1pc
Image processing software disc	1pc
USB dog	1pc
Driver software disc	1pc
USB2.0 cable	1pc
0.1mm ruler	1pc
Ø30mm eyepiece adaptor	1pc

Optional accessories

0.28X medium adapter
Ø30.5mm eyepiece adaptor

MODEL ISM-MIA

MICRO IMAGE ANALYSIS SOFTWARE



The ISM-MIA is a set of professional software for micro image analysis of stereo microscope. It owns the strong automatic analysis tool, contains powerful tools necessary in a wide range of applications from educational to professional digital microscopy. It can proceed the data covariance analysis with lead out function to Excel document. Users will find a familiar interface loaded with measurement, editing and live transmission features. The software package unlocks the potential of the microscope as demonstration, hobby or analysis platform.



MODEL ISM-CL150 COLD LIGHT ILLUMINATOR

- High brightness, smooth and adjustable illumination
- Long working time and low noise
- Fiber light guide providing satisfactory illumination at position and direction, without heat radiation to specimen

Technical specification

Halogen bulb	21V 150W
Cooling mode	fan cooling
Power supply	AC 220V/50Hz or AC 110V/60Hz
Dimension (L×W×H)	260×120×150mm
Weight	3.3kg/7.3lbs

Standard delivery

Main unit	1pc
Spare halogen bulb (21V, 150W)	1pc
Spare fuse	2pcs
Dual light guide (500mm/19.7")	1pc
Power cable	1pc

Optional accessories

Kohler illumination attachment	
Single light guide (500mm/19.7")	
Ring light guide (1000mm/39.4"), adapter ring size Φ 50mm/2.0" or Φ 60mm/2.4"	

AUTOMATIC/MANUAL METALLURGICAL SAMPLE CUTTER

- LCD displays all cutting data
- The specimens to be cut range from Ø5mm/0.2" to Ø80mm/3.1" for ISJ-CM80 and Ø5mm/0.2" to Ø100mm/3.9" for ISJ-CM100
- Manual cutting and automatic cutting can be changed over at random
- Large cutting chamber and tempered-glass view window
- Non-burn movable cutting mode improves cutting quality
- Automatic retract at the end of cutting operation
- Dual-direction feed increases the depth of cutting
- Effective cooling system reduces the risk of burns

Technical specification

Model	ISJ-CM80	ISJ-CM100
Cutting speed	2.25, 3, 4, 5, 7, 9, 12, 15 mm/min	
Rotate speed of abrasive wheel	2100 r/min	
Specifications of abrasive wheel	350×2.5×32 mm/13.78×0.10×1.26"	
Max. cutting capacity	80×200mm/3.1×7.9"	100×200mm/3.9×7.9"
Dimensions of cutting table	310×280mm/12.2×11.0"	
Power supply	380V/50 Hz or 60Hz	
Dimensions	780×800×600mm	930×700×610mm

Standard delivery

Main unit	1pc
Cutting wheel	1pc
Wrench	3pcs
Water tank	1pc
Inflow and outflow water pipe	2pcs





MODEL ISJ-MSC METALLURGICAL SAMPLE CUTTER

Technical specification

Maximum cutting diameter	Ø30mm/1.2"
Cutting wheel	250×2×32mm/9.8×0.08×1.3"
Rotation speed	2800r/min
Power supply	AC 380V 50Hz
Dimension	470×390×360mm
Weight	60kg/132lbs

Standard delivery

Main unit	1pc
Cutting wheel	2pcs
Wrench	2pcs
Anti-dust cover	1pc

MODEL ISJ-MPA1000

AUTOMATIC GRINDING/POLISHING MACHINE

Technical specification

Diameter of disc	Ø250mm/9.8"
Variable disc speed	50-600r/min (stepless speed change)
Constant disc speed	150r/min, 300r/min
Max. diameter of sample	Ø30mm/1.2"
Rotation direction	clockwise or counter clockwise
Start	slow start
Force range	1-200N
Sampling time	0-999s
Power supply	AC 220V 50Hz (standard)
	AC 110V 60Hz (option)
Dimension	660×380×640mm
Weight	45kg/99lbs

Standard delivery

Main unit	1pc
Grinding disc	1pc
Polishing disc	1pc
Grinding abrasive paper	2pcs
Polishing cloth	1pc
Inflow and outflow water pipe	2pcs
Clamp	1pc

- Mechanic central forcing
- Rotate speed display in digit
- Sampling time is adjustable
- Polishing with stepless speed control
- Quick change polishing disk design
- Preparing for six samples simultaneously
- With one-key restore program function
- Water spray system reaches the entire surface of the plate, avoiding overheating of the samples
- With emergency stop button



MODEL ISJ-MB1

MANUAL GRINDING/POLISHING MACHINE

- Stepless speed control
- Quick change polishing/grinding disk design
- Water spray system reaches the entire surface of the plate, avoiding overheating of the samples
- Rotate speed display in digit

Technical specification

Diameter of grinding disc	Ø230mm/9.1"
Diameter of polishing disc	Ø200mm/7.9"
Variable disc speed	0 -1000r/min (stepless speed change)
Power supply	AC 220V 50Hz (standard) AC 110V 60Hz (option)
Dimension	615×380×270mm
Weight	30kg/66lbs

Standard delivery

Main unit	1pc
Grinding disc	1pc
Polishing disc	1pc
Grinding abrasive paper	2pcs
Polishing cloth	1pc
Inflow and outflow water pipe	2pcs



←INSIZE→



MOUNTING PRESS

- Automatic electricity cut off after finishing molding
- Timer controls the molding time

Technical specification

Model	ISJ-MS22	ISJ-MS30	ISJ-MS45
Size of specimen	Ø22x15mm (0.9x0.6")	Ø30x15mm (1.2x0.6")	Ø45x18mm (1.8x0.7")
Power	650 W		
Max. control temperature	180°C/356°F		
Time control range	0-30min.		
Pressure control	hand wheel with pressure ready sensor		
Power supply	AC 220V 50Hz (standard) AC 110V 60Hz (option)		
Dimension	340 x 270 x 400mm		
Weight	33kg/73lbs		

Standard delivery

Main unit	1pc
Heater	1pc
Filler	1pc
Anti-dust cover	1pc

←INSIZE→

- Basic Rockwell tester
- Direct analogue reading of Rockwell scales HRC, HRA and HRB



MODEL ISH-NR150 ROCKWELL HARDNESS TESTER

Technical specification

Measuring range	20-88HRA, 20-100HRB, 20-70HRC
Test loads	10kgf preload, 60, 100, 150kgf total load
Display	dial indicator
Hardness resolution	0.5 of Rockwell unit
Max. test height	170mm/6.7"
Max. throat	165mm/6.5"
Dimension	520×240×700mm
Weight	80kg/176lbs

Standard delivery

Main unit	1pc
Large flat anvil	1pc
Small flat anvil	1pc
V-type anvil	1pc
Diamond Rockwell indenter	1pc
Rockwell ball Φ 1.5875mm indenter	1pc
Spare ball Φ 1.5875mm	5pcs
Rockwell test block HRB85-95	1pc
Rockwell test block HRC60-70	1pc
Rockwell test block HRC20-30	1pc

MODEL ISH-NMR150

MOTORIZED ROCKWELL HARDNESS TESTER

Technical specification

Measuring range	20-88HRA, 20-100HRB, 20-70HRC
Test force	10kgf preload
	60, 100, 150kgf total load
Display	dial indicator
Load control	automatic (loading/dwell/unloading)
Hardness resolution	0.5 of Rockwell unit
Max. test height	170mm/6.7"
Max. throat	165mm/6.5"
Power supply	AC 220V 50Hz (standard)
	AC 110V 60Hz (option)
Dimension	520×240×700mm
Weight	80kg/176lbs

Standard delivery

Main unit	1pc
Large flat anvil	1pc
Small flat anvil	1pc
V-type anvil	1pc
Diamond Rockwell indenter	1pc
Rockwell ball Φ 1.5875mm indenter	1pc
Spare ball Φ 1.5875mm	5pcs
Rockwell test block HRB85-95	1pc
Rockwell test block HRC60-70	1pc
Rockwell test block HRC20-30	1pc
Fuse (1A)	2pcs



←INSIZE→

MODEL ISH-DR150

DIGITAL ROCKWELL HARDNESS TESTER

- Digital display with hardness value and Rockwell scale (HRB, HRC, HRA)
- Built-in printer

Technical specification

Measuring range	20-88HRA, 20-100HRB, 20-70HRC
Test loads	10kgf preload, 60, 100, 150kgf total load
Resolution	0.1HR
Dwell time	1~30s
Data output	built-in printer and RS232C
Max. test height	170mm/6.9"
Max. throat	130mm/5.1"
Power supply	AC 220V, 50Hz (standard) AC 110V, 60Hz (option)
Dimension	510×212×730mm
Weight	85kg/187lbs

Standard delivery

Main unit	1pc
Built-in Printer	1pc
Ball indenter Ø1.5875mm	1pc
Spare ball Ø1.5875mm	5pcs
Diamond Rockwell indenter	1pc
Large flat anvil	1pc
Small flat anvil	1pc
V-type anvil	1pc
Rockwell test block	5pcs
Fuse (2A)	2pcs
RS232C cable	1pc
Anti-dust cover	1pc



←INSIZE→

MODEL ISH-RSR150

DIGITAL ROCKWELL AND SUPERFICIAL ROCKWELL HARDNESS TESTER

- Digital LED reading of 12 regular Rockwell scales
- Conversion to: HB, HV, HK
- Menu operated LCD screen with many functions such as max. value, average value, min. value, lighting intensity, dwell time, test load, hardness
- Built-in printer
- Easy load force selection by dial knob



Technical specification

Test loads	3, 10kgf preload 15, 30, 45, 60, 100, 150kgf total load
Rockwell scales	HRA, B, C, D, E, F, G, H, K and HR15N.T, 30N.T, 45N.T
Load control	automatic (loading/dwell/unloading)
Display	back light LCD screen
Data output	built-in printer and RS232C
Max. test height	180mm/7.1"
Max. throat	160mm/6.3"
Power supply	AC 220V 50Hz (standard) AC 110V 60Hz (option)
Dimension	551×260×800mm
Weight	67kg/147lbs

Standard delivery

Main unit	1pc
Diamond Rockwell indenter	1pc
Rockwell ball indenter Ø1.5875mm	1pc
Large flat anvil	1pc
Small flat anvil	1pc
V-type anvil	1pc
Rockwell test block HRC (high and low)	1pc each
Rockwell test block HRB, HR30N, HR30T	1pc each
Built-in printer	1pc
Fuse (2A)	2pcs
RS232C cable	1pc

MODEL ISH-HAB3000

DIGITAL BRINELL HARDNESS TESTER

- Read the size of indentation from microscope, find the corresponding hardness value from the chart
- No weights, electronic auto loading



Technical specification

Measuring range	8~650HB
Test force	62.5, 100, 125, 187.5, 250, 500, 750, 1000, 1500, 3000kgf
Test cycle	automatic
Max. test height	225mm/8.9"
Max. throat	135mm/5.3"
Microscope	magnification 20X, graduation 0.005mm
Power supply	AC 220V, 50Hz (standard) AC 110V 60Hz (option)
Dimension	540×200×750mm
Weight	130kg/286lbs

Standard delivery

Main unit	1pc
Microscope	1pc
Large flat anvil	1pc
Small flat anvil	1pc
V-type anvil	1pc
Steel ball indenter (Ø2.5mm, Ø5mm, Ø10mm)	1pc each
Spare steel ball (Ø2.5mm, Ø5mm, 10mm)	1pc each
Brinell test block	2pcs
Fuse	3pcs
Screwdriver	2pcs
Anti-dust cover	1pc

MODEL ISH-AB3000

DIGITAL BRINELL HARDNESS TESTER

ISH-AB3000					
Digital Brinell Hardness Tester					
Measurement			Loading		
D1: 0.818mm			F: 0.6		
D2: 0.818mm			Range 31.8 -- 218 HBW		
115.86HBW					
HPQ	No. 01		2008/06/10_17:12:02		
Loadings	Indenter	Dwell	Light	Change	Time
62.5	2.5 mm	05 S	30 %	HPQ	YEAR



- Find the edge of indentation from the microscope, directly read the hardness value from screen
- Can be automatically converted to 16 other hardness scales
- Test result can be printed in the built-in printer or transferred through RS232C data output for storage or printing
- No weights, electronic auto loading

Technical specification

Measuring range	8~650HBW
Test force	62.5, 100, 125, 187.5, 250, 500, 750, 1000, 1500, 3000kgf
Test cycle	automatic
Max. test height	225mm/8.9"
Max. throat	135mm/5.3"
Micrometer eyepiece	magnification 20X, graduation 0.00125mm
Data output	built-in printer and RS232C
Power supply	AC 220V 50Hz (standard) AC 110V 60Hz (option)
Dimension	560×220×800mm
Weight	130kg/286lbs

Standard delivery

Main unit	1pc
Micrometer eyepiece	1pc
RS232C cable	1pc
Built-in printer	1pc
Large flat anvil	1pc
Small flat anvil	1pc
V-type anvil	1pc
Steel ball indenter (Φ2.5mm, Φ5mm, Φ10mm)	1pc each
Spare steel ball (Φ2.5mm, Φ5mm, Φ10mm)	1pc each
Brinell test block	2pcs
Fuse	3pcs
Screwdriver	2pcs
Anti-dust cover	1pc



MODEL ISH-PB PORTABLE BRINELL HARDNESS TESTER

Technical specification

Measuring range	100~400HBS
Impact capacity	4.9J
Indenter	Ø10mm steel ball
Dimension	Ø55×370mm
Weight	3.3kg/7.3lbs

Standard delivery

Main unit	1pc
Brinell test block	1pc
Ø10mm spare steel ball	3pcs
20X readout microscope	1pc
Wrench	2pcs

MODEL ISH-DV1000

DIGITAL MICRO HARDNESS TESTER

Technical specification

Measuring range	5~2500HV
Test load	0.01, 0.025, 0.05, 0.1, 0.2, 0.3, 0.5, 1kgf
Vickers scales	HV0.01, HV0.025, HV0.05, HV0.1, HV0.2, HV0.3, HV0.5, HV1
Load control	Automatic (loading/dwell/unloading)
Load duration	5-60s (adjustable)
Test force selection	dial
Objective	10X, 40X
Eyepiece	10X
Total magnification	100X (for observation) 400X (for measuring)
Microscope resolution	0.0625 μ m
Max. test height	65mm/2.6"
Max. throat	85mm/3.3"
X-Y stage	dimensions: 100 \times 100mm (3.9 \times 3.9") travel range: 25 \times 25mm (1.0 \times 1.0") reading: 0.01mm
Power supply	AC 220V 50Hz (standard) AC 110V 60Hz (option)
Dimension	405 \times 290 \times 480mm
Weight	25kg/55lbs

Standard delivery

Main unit	1pc
Micro Vickers indenter	1pc
Micro Vickers test block (high, medium)	1pc each
Objective 10X, 40X	1pc each
10X eyepiece	1pc
X-Y stage, slice holder, cylinder holder, vice	1pc each
Built-in printer	1pc
Level	1pc
Bulb (6V/12W)	2pcs
Fuse (1A, 2A)	2pcs each
Adjustable feet	4pcs



- Measuring microscope with digital encoder reading
- Built-in printer



MODEL ISH-TDV1000

AUTO-TURRET DIGITAL MICRO HARDNESS TESTER

Technical specification

Measuring range	5HV~3000HV
Test load	0.01, 0.025, 0.05, 0.1, 0.2, 0.3, 0.5, 1kgf
Vickers scales	HV0.01, HV0.025, HV0.05, HV0.1, HV0.2, HV0.3, HV0.5, HV1
Load control	automatic (loading/dwell/unloading)
Load duration	5-60s (12 steps)
Test force selection	dial
Objective	10X, 40X
Eyepiece	15X
Total magnification	150X (for observation) 600X (for measuring)
Resolution	0.025µm
Max. test height	85mm/3.3"
Max. throat	85mm/3.3"
X-Y stage	dimensions: 100×100mm (3.9×3.9") travel range: 25×25mm (1.0×1.0") reading: 0.01mm
Measuring mode	read hardness value from display AC 220V 50Hz (standard)
Power supply	AC 110V 60Hz (option) AC 220V 60Hz (option)
Dimension	540×500×640mm
Weight	45kg/99lbs

Standard delivery

Main unit	1pc
Micro Vickers indenter	1pc
Micro Vickers test block (700HV1, 400HV0.2)	1pc each
X-Y stage, slice holder, cylinder holder, vice	1pc each
10X, 40X objective	1pc each
15X digital eyepiece	1pc
Level	1pc
Built-in printer	1pc
Spare bulb	2pcs
Spare fuse	2pcs
Camera adaptor	1pc
Screwdriver	1pc
Wrench	2pcs

Optional accessories

Knoop indenter	
Digital camera	



←INSIZE→



MODEL ISH-TV1000 AUTO-TURRET MICROHARDNESS TESTER

Technical specification

Measuring range	5HV~3000HV
Test load	0.01, 0.025, 0.05, 0.1, 0.2, 0.3, 0.5, 1kgf
Vickers scales	HV0.01, HV0.025, HV0.05, HV0.1, HV0.2, HV0.3, HV0.5, HV1
Load control	automatic (loading/dwell/unloading)
Load duration	5-60s (12 steps)
Test force selection	dial
Objective	10X, 40X
Eyepiece	15X
Total magnification	150X (for observation) 600X (for measuring)
Resolution	0.025µm
Max. test height	85mm/3.3"
Max. throat	85mm/3.3"
X-Y stage	dimensions: 100×100mm (3.9×3.9") travel range: 25×25mm (1.0×1.0") reading: 0.01mm
Measuring mode	read hardness value from table
Power supply	AC 220V 50Hz (standard) AC 110V 60Hz (option) AC 220V 60Hz (option)
Dimension	540×500×640mm
Weight	45kg/99lbs

Standard delivery

Main unit	1pc
Micro Vickers indenter	1pc
Micro Vickers test block (700HV1, 400HV0.2)	1pc each
X-Y stage, slice holder, cylinder holder, vice	1pc each
10X, 40X objective	1pc each
15X digital eyepiece	1pc
Level	1pc
Built-in printer	1pc
Spare bulb	2pcs
Spare fuse	2pcs
Camera adaptor	1pc
Screwdriver	1pc
Wrench	2pcs

Optional accessories

Knoop indenter	
Digital camera	

DIGITAL VICKERS HARDNESS TESTER



- Adjustable brightness of indentation
- Electricity loss protection device by lithium battery
- Conversion to hardness scales Rockwell, Brinell
- Built-in printer and RS232

Technical specification

Model	ISH-DV10	ISH-DV50
Measuring range	8HV0.3~2500HV10	5HV1~2500HV50
Test force	0.3, 0.5, 1.0, 3.0, 5.0, 10.0kgf	1.0, 5.0, 10.0, 20.0, 30.0, 50.0kgf
Load control	automatic (loading/dwell/unloading)	
Display	LCD	
Load duration	5-60sec	
Magnification of microscope	for measurement: 200X (objective 20X/eyepiece 10X) for observation: 100X (objective 10X/eyepiece 10X)	for measurement: 100X (objective 10X/eyepiece 10X)
Resolution of microscope	0.0625µm	0.25µm
Max. test height	160mm/6.3"	
Max. throat	135mm/5.3"	
Power supply	AC 220V, 50Hz (standard) AC 110V, 60Hz (option)	
Dimension	650×540×270mm	
Weight	40kg/88lbs	45kg/99lbs

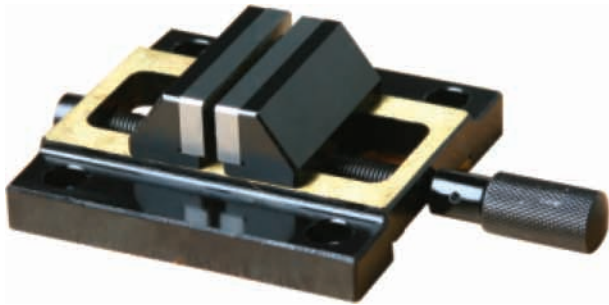
Standard delivery

Model	ISH-DV10	ISH-DV50
Main unit	1pc	1pc
Anvil (large flat, medium flat, V-type)	1pc each	1pc each
Vickers test block (high, medium)	2pcs	2pcs
Objective	2pcs (10X, 20X)	1pc (10X)
Eyepiece 10X	1pc	1pc
Built-in printer	1pc	1pc
Spare bulb	2pcs	2pcs
Adjustable feet	4pcs	4pcs

Optional accessories

Slice holder
Cylinder holder
Vice
X-Y stage
Level
Knoop indenter
16X micrometer eyepiece
6.8 inch liquid crystal display

ACCESSORY FOR DIGITAL VICKERS
HARDNESS TESTER



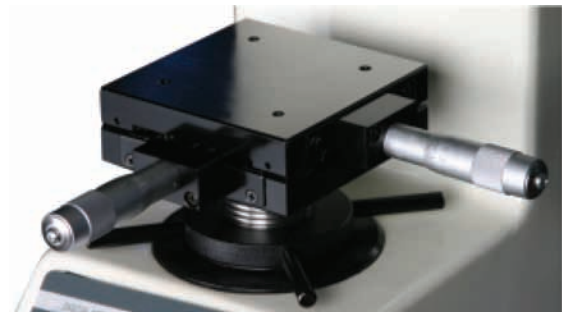
VICE



SLICE HOLDER



CYLINDER HOLDER



X-Y STAGE

MODEL ISH-BRV

BRINELL/ROCKWELL/VICKERS HARDNESS TESTER

Technical specification

Rockwell test load	10kgf preload, 60, 100, 150kgf total load
Brinell test load	31.2, 62.5, 187.6kgf
Vickers test load	30, 100kgf
Magnification of microscope	37.5X, 75X
Max. test height	200mm/7.9"
Max. throat	200mm/7.9"
Power supply	AC 220V 50Hz (standard) AC 110V 60Hz (option)
Dimension	546×300×767mm
Weight	90kg/198lbs

Standard delivery

Main unit	1pc	Vickers test block	1pc
Diamond Rockwell indenter	1pc	Weight	5pcs
Diamond Vickers indenter	1pc	Microscope seating	1pc
Ø1.5875mm, Ø2.5mm, Ø5mm ball indenter	1pc each	15X micrometer eyepiece	1pc
Large anvil	1pc	2.5X, 5X objective	1pc each
Small anvil	1pc	Baffle anvil	1set
V-anvil	1pc	Taper anvil	1pc
Rockwell test block HRC (high, low)	1pc each	Fuse (0.5A)	2pcs
Rockwell test block HRB	1pc	Bulb (6V/15W)	2pcs
Brinell test block	1pc	Bulb (6V/5W)	4pcs
		Anti-dust cover	1pc



←INSIZE→

Model ISH-PHA

Portable Hardness Tester

- Large LCD display with backlight
- Communicate with printer via wireless IR
- Low and high limits setting with judgment
- Based on HL scale, converted to other hardness scales (HV, HB, HRC, HRB, HS) and tensile strength(Mpa)
- Conforms to the standard ASTM A956-02



Specifications

Resolution	1HL, 1HV, 1HB, 0.1HRC, 0.1HRB, 1HS, 1MPa
Accuracy	±6HL (HL=800)
Display	hardness HL, conversion hardness, impact direction, test times, average value, material, date
Output	wireless IR and USB
Workpiece	min. weight: 5kg min. thickness: 5mm min. thickness of layers: 0.8mm min. radius of curved surface: 11mm
Power supply	three AAA alkaline batteries
Working temperature	0°C-50°C(32°F -122°F)
Dimension	150 × 80 × 24mm (5.9×3.1×0.9 inch)
Weight	200g/7.1oz

Standard delivery

Main unit	1pc
Impact device D	1pc
Printer	1pc
Standard test block	1pc
Cleaning brush	1pc
Small supporting ring	1pc
AC/DC adapter	1pc

Material and range of impact device D

Material	HL	HV	HB	HRC	HRB	HS	Tensile strength
Steel & cast steel	300-910	83-976	140-651	19.8-68.5	59.6-99.6	26.4-99.5	375-2639
Tool steel	300-640	80-900		21-67			
Stainless steel	300-800	85-802	85-655	20-62	47-102		
Cast iron	360-660		140-387				
Cast aluminum alloy	170-560		30-159				
Brass	200-550		40-173		13.5-95.3		
Bronze	300-700		60-290				
Copper	200-690		45-315				

Model ISH-SPHA

Portable Hardness Tester

- Touch screen, large LCD display with backlight
- Communicate with printer via wireless IR
- User profiles for fast change of all settings
- Large memory with on-screen review of data
- Low and high limits setting with judgment
- Based on HL scale, converted to other hardness scales (HV, HB, HRC, HRB, HS) and tensile strength(Mpa)
- Conforms to the standard ASTM A956-02



Specifications

Resolution	1HL, 1HV, 1HB, 0.1HRC, 0.1HRB, 1HS, 1MPa
Accuracy	±6HL (HL=800)
Display	hardness HL, conversion hardness, impact direction, test times, average value, difference of max. and min., material, impact device, time, battery power
Output	wireless IR and USB
Workpiece	min. weight: 5kg min. thickness: 5mm min. thickness of layers: 0.8mm min. radius of curved surface: 11mm
Power supply	built-in 3.7V rechargeable lithium-battery
Working temperature	0°C-50°C(32°F -122°F)
Dimension	135×83×24mm(5.3× 3.2 ×0.9 inch)
Weight	230g/8.1oz

Standard delivery

Main unit	1pc
Impact device D	1pc
Printer	1pc
Standard test block	1pc
Cleaning brush	1pc

Small supporting ring	1pc
AC/DC adapter	1pc

Optional accessories

Impact device G	
-----------------	--

Material and range of impact device D

Material	HL	HV	HB	HRC	HRB	HS	Tensile strength
Steel & cast steel	300-910	83-976	140-651	19.8-68.5	59.6-99.6	26.4-99.5	375-2639
Tool steel	300-640	80-900		21-67			
Stainless steel	300-800	85-802	85-655	20-62	47-102		
Cast iron	360-660		140-387				
Cast aluminum alloy	170-560		30-159				
Brass	200-550		40-173		13.5-95.3		
Bronze	300-700		60-290				
Copper	200-690		45-315				



ISH-R1015



ISH-R14530



ISH-R2550



ISH-R1113



ISH-R12517



ISH-R16530



ISH-SR1113



ISH-SR12517



ISH-SR16530



ISH-SR1015



ISH-SR14530



ISH-RUN

SUPPORT RINGS FOR PORTABLE HARDNESS TESTER

Technical specification

Model	Sketch	Workpiece (mm)
ISH-R1015		cylindrical outside surface R10-R15
ISH-R14530		cylindrical outside surface R14.5-R30
ISH-R2550		cylindrical outside surface R25-R50
ISH-R1113		cylindrical inside surface R11-R13
ISH-R12517		cylindrical inside surface R12.5-R17
ISH-R16530		cylindrical inside surface R16.5-R30
ISH-SR1015		spherical outside surface SR10-SR15
ISH-SR14530		spherical outside surface SR14.5-SR30
ISH-SR1113		spherical inside surface SR11-SR13
ISH-SR12517		spherical inside surface SR12.5-SR17
ISH-SR16530		spherical inside surface SR16.5-SR30
ISH-RUN		cylindrical outside surface, radius adjustable >R10



ISH-SA



ISH-SD

SHORE DUROMETER

Technical specification

Model	ISH-SA	ISH-SD
Test material	soft plastic, rubber, leather, etc.	hard plastic, hard rubber, etc.
Measuring range	0~100HA	0~100HD
Stroke	2.5mm	
Tip dimension	Ø0.79mm	SR0.1mm
Dimension	115×60×25mm	
Net weight	0.5 kg/1.1lbs	



MODEL ISH-SC MICROPORE MATERIAL SHORE DUROMETER

Technical specification

Test material	foam, sponge, etc.
Measuring range	0~100HW
Stroke	2.5mm
Tip dimension	SR2.5mm
Dimension	115×60×25mm
Net weight	0.5 kg/1.1lbs





ISH-STAC

Durometer is not included

DUROMETER TEST STAND

- Operating stand for shore durometers
- Convenient and accurate way for repetitive test of hardness

Technical specification

Model	ISH-STAC	ISH-STD
For durometer	ISH-SA, ISH-SC	ISH-SD
Table	Ø100mm/4"	Ø100mm/4"
Mass of weight	1kg/2.2lbs	5kg/11lbs



DIGITAL SHORE HARDNESS TESTER

- Maximum value tracking
- Average value from maximum 9 test results
- With RS232C interface
- Automatic power off

Technical specification

Model	ISH-PS100A	ISH-PS100D	ISH-PS100C
Test material	soft plastic, rubber, leather, etc.	hard plastic, hard rubber, etc.	foam, etc.
Measuring range	0-100HA	0-100HD	0-100HC
Resolution	0.01HA	0.01HD	0.01HC
Accuracy	±1%		
Working condition	0°C-50°C (32°F-122°F)		
Power supply	4×1.5V AAA batteries		
Dimension	162×65×28mm		
Weight	173g/6.1oz	160g/5.6oz	160g/5.6oz

Standard accessories

Main unit	1pc
Test block	1pc
Battery	4pcs

Optional accessories

Cable & software for RS232C



PUSH/PULL FORCE GAUGE

- Single click can make a measurement conversion from peak force to tracking force
- Tolerance indication
- The scales provide both N and kgf or lbf and N graduations
- Accuracy $\pm 1\%$

Technical specification

Model		ISF-F10	ISF-F20	ISF-F30	ISF-F50	ISF-F100	ISF-F200	ISF-F300	ISF-F500
Max. load	kgf	1	2	3	5	10	20	30	50
	N	10	20	30	50	100	200	300	500
Graduation	gf	5	10	20	20	50	100	200	200
	N	0.05	0.1	0.2	0.2	0.5	1	2	2

Model		ISF-FL2	ISF-FL5	ISF-FL10	ISF-FL20	ISF-FL30	ISF-FL50	ISF-FL100
Max. load	lbf	2	5	10	20	30	50	100
	N	9	22	44	88	100	220	440
Graduation	lbf	0.01	0.02	0.05	0.1	0.2	0.2	0.5
	N	0.05	0.1	0.2	0.5	0.5	1	2

Standard delivery

Main unit	1pc
Push tip	4pcs (1pc flat, 1pc point, 1pc V-type, 1pc knife-edge)
Pull clamp	1pc
Extension rod	1pc
M3x12 Screw	5pcs



ISF-DF2~DF500

DIGITAL PUSH/PULL FORCE GAUGE

- Digital display of tension and compression forces, display in two directions (selectable)
- Capture the peak value of pull/push force, data track, automatic peak release function
- Measuring units (kgf, N, lbf) are selectable
- RS232C output, transmit the data to printer or computer to save into "Excel", for analysis or print
- Initial input of the tolerance limit (high/low) enables the gauge to judge the measured result as GO/NG
- 10 groups of data can be memorized for analysis
- Runs on internal NiCd rechargeable battery or AC/DC adapter
- Automatic power off
- Alarm is selectable for overload and NG

Technical specification

Model	ISF-DF2	ISF-DF5	ISF-DF10	ISF-DF20	ISF-DF50	ISF-DF100	ISF-DF200	ISF-DF500	ISF-DF1K	ISF-DF2K	ISF-DF5K	ISF-DF10K	ISF-DF20K	ISF-DF50K	ISF-DF100K	
Max. load	N 2	5	10	20	50	100	200	500	1K	2K	5K	10K	20K	50K	100K	
Resolution	N 0.001	0.001	0.005	0.01	0.01	0.05	0.1	0.1	0.5	1	1	5	10	10	50	
Sensor	internal								external							
Accuracy	±0.5%															
Dimension	228×66×36 (mm)															

Standard delivery

Model	ISF-DF2	ISF-DF5	ISF-DF10	ISF-DF20	ISF-DF50	ISF-DF100	ISF-DF200	ISF-DF500	ISF-DF1K	ISF-DF2K	ISF-DF5K	ISF-DF10K	ISF-DF20K	ISF-DF50K	ISF-DF100K	
Main unit	1pc															
AC/DC adapter	1pc															
Push/pull attachment	6pcs (1pc flat push tip, 1pc point push tip, 1pc V-type push tip, 1pc knife-edge push tip, 1pc pulling clamp, 1pc extension rod)									5pcs (1pc small flat push tip, 1pc medium flat push tip, 1pc large flat push tip, 2pcs pulling clamps)						
M3x12 screw	5pcs															

Optional accessories

RS232 cable and software



ISF-C01



ISF-C02



ISF-C03



ISF-C04



ISF-C05



ISF-C06



ISF-C07



ISF-C08



ISF-C09



ISF-C10



ISF-C11



ISF-C12



ISF-C13



ISF-C14



ISF-C15



ISF-C16

PUSH TIP AND PULL CLAMP FOR FORCE GAUGE

- Supplied in single piece

Technical specification

Push tip

Model	Capacity (N/lbf)	Diameter
ISF-C01	5000/1100	10mm/0.40"
ISF-C02	5000/1100	16mm/0.63"
ISF-C03	3000/660	50mm/2.00"

Pull ring

Model	Capacity (N/lbf)	Diameter
ISF-C04	5000/1100	20mm/0.80"

Pull clamp

Model	Capacity (N/lbf)	Max opening size
ISF-C05	500/110	3mm/0.12"
ISF-C06	500/110	4mm/0.16"
ISF-C07	1000/220	20mm/0.80"
ISF-C08	500/110	8mm/0.32"
ISF-C09	5000/1100	4.5mm/0.18"
ISF-C10	2000/440	4mm/0.16"
ISF-C11	5000/1100	5mm/0.20"
ISF-C12	3000/660	4mm/0.16"
ISF-C13	5000/1100	33mm/1.30"

Special pull clamp

Model	Capacity (N/lbf)	Workpiece
ISF-C14	5000/1100	fabric
ISF-C15	5000/1100	thread
ISF-C16	5000/1100	workpiece with hole



Force gauge is not included

MODEL ISF-HTS500 MOTORIZED HORIZONTAL TEST STAND

- Motorized horizontal tensile/compress test stand applied with force gauges

Technical specification

Max. load	500N/111lbf
Travel	250mm/10"
Test speed	25 - 480mm/min (1-19inch/min)
Max. distance	280mm/11"
Power supply	AC220V 50Hz (standard) AC110V 60Hz (option)
Dimension	570×200×300 (mm)

Standard delivery

Main unit	1pc
Clamp	1pc
Wrench	1pc
Power cable	1pc

Optional accessories

Clamps: ISF-C01, ISF-C02, ISF-C03, ISF-C04, ISF-C05, ISF-C06, ISF-C07, ISF-C8, ISF-C09, ISF-C10, ISF-C11, ISF-C12, ISF-C13, ISF-C14, ISF-C15, ISF-C16

MODEL ISF-VTS5000

MOTORIZED VERTICAL TEST STAND

- Motorized vertical tensile/compress test stand applied with force gauges

Technical specification

Max. load	5000N/1111lbf
Min. load	25N/5.5lbf
Travel	200mm/8"
Test speed	30 - 230mm/min (1.2-9.1inch/min)
Max. distance	250mm/10"
Power supply	AC220V 50Hz (standard) AC110V 60Hz (option)
Dimension	410×260×1100 (mm)

Standard delivery

Main unit	1pc
Clamp	2pcs
Wrench	1pc
Power cable	1pc

Optional accessories

Clamps: ISF-C01, ISF-C02, ISF-C03, ISF-C04, ISF-C05, ISF-C06, ISF-C07, ISF-C08, ISF-C09, ISF-C10, ISF-C11, ISF-C12, ISF-C13, ISF-C14, ISF-C15, ISF-C16



←INSIZE→

Force gauge is not included

←INSIZE→



Force gauge is not included

MODEL ISF-LR MANUAL TEST STAND

Technical specification

Capacity	500N/111lbf
Travel	170mm/6.7"
Dimension	250×360×470 (mm)
Weight	18kg/39.6lbs

Standard delivery

Main unit	1pc
Nut	1pc
Screw	1pc
Wrench	1pc

Optional accessories

Clamps: ISF-C01, ISF-C02, ISF-C03, ISF-C04, ISF-C05, ISF-C06, ISF-C07, ISF-C08, ISF-C09, ISF-C10, ISF-C11, ISF-C12, ISF-C13, ISF-C14, ISF-C15, ISF-C16



ISF-MTD500



ISF-MT500

Force gauge is not included

MANUAL VERTICAL TEST STAND

- For tensile and compress test with force gauges
- ISF-MTD500 is supplied with digital scale
- ISF-MT500 is supplied with frame for tensile test

Technical specification

Model	ISF-MTD500	ISF-MT500
Max. load		500N/111lbf
Travel		150mm/5"
Dimension		160×240×460mm

Standard delivery

Main unit	1pc
Nut	1pc
Screw	1pc
Wrench	1pc

Optional accessories

Clamps: ISF-C01, ISF-C02, ISF-C03, ISF-C04, ISF-C05, ISF-C06, ISF-C07, ISF-C08, ISF-C09, ISF-C10, ISF-C11, ISF-C12, ISF-C13, ISF-C14, ISF-C15, ISF-C16



ISF-S10~S20



ISF-S50~S500



ISF-S1000~S5000

DIGITAL SPRING TESTER

- For pull and push test of springs
- Repeat test for large quantity of springs
- 10 test result memory, automatic mean value
- Unit in N, kgf and lbf
- Catch the peak value of test
- Catch the peak value and show for 1-10 seconds (adjustable), then automatically release and ready for next peak value
- Compare: initial input of high and low limit enables the device to judge the value as GO (green light)/NG (red light and/or buzz)
- Automatic power off: 1-60 minutes (adjustable)
- Data output: RS232
- Built-in printer: print the maximum, minimum and mean value, make GO and NG judgment

Technical specification

Model	ISF -S10	ISF -S20	ISF -S50	ISF -S100	ISF -S200	ISF -S500	ISF -S1000	ISF -S2000	ISF -S5000
Max. working load	10N	20N	50N	100N	200N	500N	1000N	2000N	5000N
Load resolution	0.001N	0.002N	0.01N	0.02N	0.05N	0.1N	0.2N	0.5N	1N
Test travel	70mm/2.8"		95mm/3.7"				150mm/5.9"		
Distortion resolution	0.01mm/0.0005"								
Platen diameter	34mm/1.3"			49mm/1.9"			108mm/4.3"		
Max. spring free length	70mm/2.8"		95mm/3.7"				200mm/7.9"		
Accuracy	±1%								

Standard delivery

Main unit	1pc
Built-in printer	1pc
Wrench	1pc
Power cable	1pc



IST-M1~M20

DIGITAL TORQUE METER

- Unit in kgf·cm, N·m, lbf·in
- Data track and hold modes
- Measure both clockwise and counter clockwise
- Initial input of the tolerance limit (high/low) enables the device to judge the measured result as GO/NG
- Heavy-duty metal construction
- Runs on internal Ni-MH batteries or AC/DC adapter
- RS232C output
- Automatical turning off, power off time can be set up

Technical specification

Model	IST-M1	IST-M2	IST-M5	IST-M10	IST-M20	IST-M50	IST-M100	IST-M200	IST-M500
Max. torque (N·m)	1	2	5	10	20	50	100	200	500
Resolution (N·m)	0.0005	0.001	0.002	0.005	0.01	0.02	0.05	0.1	0.2
Accuracy	±0.5%					±1%			



DIGITAL BOTTLE CAP TORQUE METER

- Unit in kgf.cm, N.m, lbf.in
- Measure both clockwise and counter clockwise
- Built-in printer
- RS232 output
- Application: bottle cap, etc.

Technical specification

Model	IST-B1	IST-B2	IST-B5	IST-B10	IST-B20
Capacity (N.m)	1	2	5	10	20
Resolution (N.m)	0.0005	0.001	0.002	0.005	0.01
Accuracy	±0.5%				
Max. bottle diameter	200mm/8"				

MODEL NUMBER INDEX

SERIES	PRODUCT	PAGE
4131		
4131	SURFACE ROUGHNESS COMPARATOR	2
ISC		
ISC-CMS	SOFTWARE	27
ISC-MV554	MANUAL COORDINATE MEASURING MACHINE	25-26
ISF		
ISF-C01~C16	PUSH TIP AND PULL CLAMP FOR FORCE GAUGE	72
ISF-DF2~DF100K	DIGITAL PUSH/PULL FORCE GAUGE	71
ISF-F10~F500	PUSH/PULL FORCE GAUGE	70
ISF-FL2~FL100	PUSH/PULL FORCE GAUGE	70
ISF-HTS500	MOTORIZED HORIZONTAL TEST STAND	73
ISF-LR	MANUAL TEST STAND	75
ISF-MT500	MANUAL VERTICAL TEST STAND	76
ISF-MTD500	MANUAL VERTICAL TEST STAND	76
ISF-S10~S5000	DIGITAL SPRING TESTER	77
ISF-VTS5000	MOTORIZED VERTICAL TEST STAND	74
ISH		
ISH-AB3000	DIGITAL BRINELL HARDNESS TESTER	54
ISH-BRV	BRINELL/ROCKWELL/VICKERS HARDNESS TESTER	62
ISH-DR150	DIGITAL ROCKWELL HARDNESS TESTER	51
ISH-DV10	DIGITAL VICKERS HARDNESS TESTER	59-60
ISH-DV50	DIGITAL VICKERS HARDNESS TESTER	59-60
ISH-DV1000	DIGITAL MICRO HARDNESS TESTER	56
ISH-HAB3000	DIGITAL BRINELL HARDNESS TESTER	53
ISH-NMR150	MOTORIZED ROCKWELL HARDNESS TESTER	50
ISH-NR150	ROCKWELL HARDNESS TESTER	49
ISH-PB	PORTABLE BRINELL HARDNESS TESTER	55
ISH-PHA	PORTABLE HARDNESS TESTER	63
ISH-PS100A	DIGITAL SHORE HARDNESS TESTER	69
ISH-PS100C	DIGITAL SHORE HARDNESS TESTER	69
ISH-PS100D	DIGITAL SHORE HARDNESS TESTER	69
ISH-R1015~RUN	SUPPORT RINGS FOR PORTABLE HARDNESS TESTER	65
ISH-RSR150	DIGITAL ROCKWELL AND SUPERFICIAL ROCKWELL HARDNESS TESTER	52
ISH-SA	SHORE DUROMETER	66
ISH-SC	MICROPORE MATERIAL SHORE DUROMETER	67
ISH-SD	SHORE DUROMETER	66
ISH-SPHA	PORTABLE HARDNESS TESTER	64
ISH-STAC	DUROMETER TEST STAND	68
ISH-STD	DUROMETER TEST STAND	68
ISH-TDV1000	AUTO-TURRET DIGITAL MICRO HARDNESS TESTER	57
ISH-TV1000	AUTO-TURRET MICRO HARDNESS TESTER	58
ISJ		
ISJ-CM100	AUTOMATIC/MANUAL METALLURGICAL SAMPLE CUTTER	44
ISJ-CM80	AUTOMATIC/MANUAL METALLURGICAL SAMPLE CUTTER	44
ISJ-MB1	MANUAL GRINDING/POLISHING MACHINE	47
ISJ-MPA1000	AUTOMATIC GRINDING/POLISHING MACHINE	46
ISJ-MS22	MOUNTING PRESS	48
ISJ-MS30	MOUNTING PRESS	48
ISJ-MS45	MOUNTING PRESS	48
ISJ-MSC	METALLURGICAL SAMPLE CUTTER	45
ISL		
ISL-A05	LINEAR SCALE	29-30

MODEL NUMBER INDEX

SERIES	PRODUCT	PAGE
ISL-A1	LINEAR SCALE	29-30
ISL-A5	LINEAR SCALE	29-30
ISL-B1	LINEAR SCALE	29-30
ISL-B5	LINEAR SCALE	29-30
ISL-DR2	DIGITAL READOUT	28
ISL-DR3	DIGITAL READOUT	28
ISL-DRE	DIGITAL READOUT	28
ISM		
ISM-BDL120	BINOCULAR LCD MEASURING MICROSCOPE	32
ISM-CL150	COLD LIGHT ILLUMINATOR	43
ISM-D300	DIGITAL CAMERA	41
ISM-D500	DIGITAL CAMERA	41
ISM-DL120	LCD MEASURING MICROSCOPE	33
ISM-DLC120	LCD MICROSCOPE	34
ISM-M1000	METALLURGICAL MICROSCOPE	39
ISM-M600	METALLURGICAL MICROSCOPE	40
ISM-MIA	MICRO IMAGE ANALYSIS SOFTWARE	42
ISM-PM100	PORTABLE MEASURING MICROSCOPE	31
ISM-S10L	LONG WORKING DISTANCE STEREO MICROSCOPE	36
ISM-S40	STEREO MICROSCOPE	35
ISM-ZS45	ZOOM STEREO MICROSCOPE	37
ISM-ZS80A	ZOOM STEREO MICROSCOPE	38
ISO		
ISO-1250	COATING THICKNESS GAUGE	3
ISO-1250FN	COATING THICKNESS GAUGE	4
ISP		
ISP-AZ3025	ERECT IMAGE PROFILE PROJECTOR	11-12
ISP-M2D	MEASURING SOFTWARE	18
ISP-W3020	HORIZONTAL PROFILE PROJECTOR	13-14
ISP-W4025	HORIZONTAL PROFILE PROJECTOR	15-16
ISP-Z3015	ERECT IMAGE PROFILE PROJECTOR	9-10
ISR		
ISR-16	SURFACE ROUGHNESS TESTER	1
IST		
IST-B1~B20	DIGITAL BOTTLE CAP TORQUE METER	79
IST-M1~M500	DIGITAL TORQUE METER	78
ISU		
ISU-200	ULTRASONIC THICKNESS GAUGE	5
ISU-250	ULTRASONIC THICKNESS GAUGE	6
ISU-250B	ULTRASONIC THICKNESS GAUGE	7
ISV		
ISV-400	VIBRATION TESTER	8
ISV-E2515	CNC VIDEO MEASURING SYSTEM	21-22
ISV-E3020	CNC VIDEO MEASURING SYSTEM	21-22
ISV-E4030	CNC VIDEO MEASURING SYSTEM	21-22
ISV-F1510	VIDEO MEASURING SYSTEM	23-24
ISV-F2010	VIDEO MEASURING SYSTEM	23-24
ISV-F2515	VIDEO MEASURING SYSTEM	23-24
ISV-F3020	VIDEO MEASURING SYSTEM	23-24
ISV-F4030	VIDEO MEASURING SYSTEM	23-24
ISV-T370	TOUCH SCREEN VIDEO MEASURING SYSTEM	19-20

Model ISH-PHA

Portable Hardness Tester

- Large LCD display with backlight
- Communicate with printer via wireless IR
- Low and high limits setting with judgment
- Based on HL scale, converted to other hardness scales (HV, HB, HRC, HRB, HS) and tensile strength(Mpa)
- Conforms to the standard ASTM A956-02



Specifications

Resolution	1HL, 1HV, 1HB, 0.1HRC, 0.1HRB, 1HS, 1MPa
Accuracy	±6HL (HL=800)
Display	hardness HL, conversion hardness, impact direction, test times, average value, material, date
Output	wireless IR and USB
Workpiece	min. weight: 5kg min. thickness: 5mm min. thickness of layers: 0.8mm min. radius of curved surface: 11mm
Power supply	three AAA alkaline batteries
Working temperature	0°C-50°C(32°F -122°F)
Dimension	150 × 80 × 24mm (5.9×3.1×0.9 inch)
Weight	200g/7.1oz

Standard delivery

Main unit	1pc
Impact device D	1pc
Printer	1pc
Standard test block	1pc
Cleaning brush	1pc
Small supporting ring	1pc
AC/DC adapter	1pc

Material and range of impact device D

Material	HL	HV	HB	HRC	HRB	HS	Tensile strength
Steel & cast steel	300-910	83-976	140-651	19.8-68.5	59.6-99.6	26.4-99.5	375-2639
Tool steel	300-640	80-900		21-67			
Stainless steel	300-800	85-802	85-655	20-62	47-102		
Cast iron	360-660		140-387				
Cast aluminum alloy	170-560		30-159				
Brass	200-550		40-173		13.5-95.3		
Bronze	300-700		60-290				
Copper	200-690		45-315				

Model ISH-SPHA

Portable Hardness Tester

- Touch screen, large LCD display with backlight
- Communicate with printer via wireless IR
- User profiles for fast change of all settings
- Large memory with on-screen review of data
- Low and high limits setting with judgment
- Based on HL scale, converted to other hardness scales (HV, HB, HRC, HRB, HS) and tensile strength(Mpa)
- Conforms to the standard ASTM A956-02



Specifications

Resolution	1HL, 1HV, 1HB, 0.1HRC, 0.1HRB, 1HS, 1MPa
Accuracy	±6HL (HL=800)
Display	hardness HL, conversion hardness, impact direction, test times, average value, difference of max. and min., material, impact device, time, battery power
Output	wireless IR and USB
Workpiece	min. weight: 5kg min. thickness: 5mm min. thickness of layers: 0.8mm min. radius of curved surface: 11mm
Power supply	built-in 3.7V rechargeable lithium-battery
Working temperature	0°C-50°C(32°F -122°F)
Dimension	135×83×24mm(5.3× 3.2 ×0.9 inch)
Weight	230g/8.1oz

Standard delivery

Main unit	1pc
Impact device D	1pc
Printer	1pc
Standard test block	1pc
Cleaning brush	1pc

Small supporting ring	1pc
AC/DC adapter	1pc

Optional accessories

Impact device G	
-----------------	--

Material and range of impact device D

Material	HL	HV	HB	HRC	HRB	HS	Tensile strength
Steel & cast steel	300-910	83-976	140-651	19.8-68.5	59.6-99.6	26.4-99.5	375-2639
Tool steel	300-640	80-900		21-67			
Stainless steel	300-800	85-802	85-655	20-62	47-102		
Cast iron	360-660		140-387				
Cast aluminum alloy	170-560		30-159				
Brass	200-550		40-173		13.5-95.3		
Bronze	300-700		60-290				
Copper	200-690		45-315				

We reserve the right to change or modify the design and specification of products in this catalogue without prior notice.

Copyright © INSIZE CO., LTD. All Rights Reserved.

INSIZE is the registered trademark of INSIZE CO.,LTD .

www.insize-nl.com

www.insize.com

INSIZE (AUSTRIA) CO., LTD.

Add: Weimarerstr 106b/2, 1190 Vienna, Austria
Tel/Fax: +43 13672558
E-mail: austria@insize.com

INSIZE DO (BRAZIL) LTDA.

Add: Rua Julio de Castilhos, 1014/1016 - Belenzinho
CEP 03059-000-Sao Paulo-SP-Brazil
Tel: +55 11 20812412
Fax: +55 11 20812901
E-mail: brazil@insize.com

INSIZE (CHINA) CO., LTD.

Add: 80 Xiangyang Road, Suzhou New District, 215009 China
Tel: +86 512 68099993
Fax: +86 512 68085081
E-mail: china@insize.com

INSIZE INC. (USA)

Add: 1421A Skyridge Drive, Crystal Lake, IL 60014 USA
Tel: +1 6308804554
E-mail: usa@insize.com

Distributed by:

