



Constant Face Driver CoE

Turning and milling in one set-up

www.roehm.biz



AMTE

Herelsestraat 175, 4726 SR Heerle • T 0165 30 41 88 • F 0165 30 47 88 • E info@amtc.eu • I www.amtc.eu

RÖHM

driven by technology



CoE: Retrofitting has time-out

Best for efficiently turning of workpieces along their entire length without re-clamping and highly accurate. One single clamping process can be used for milling a groove or interlock. This saves re-clamping, reducing time and costs.

Developed according to the construction set principle, enabling universal exchange of driving discs and centring tips. The mechanic pressure balancer leads to an even clamping power even for uneven workpiece fronts. The deflecting centring tip provides the workpiece longitudinal stop at the front. Clamping circle diameter 8 to 80 mm at a workpiece weight of max. 100 kg.

Benefits

- Face driver for turning and milling processing
- The surface values at milling with the CoE are comparable to processing in a vice
- Balancing driving discs without radial tolerance
- Deflecting centring tip
- Stable, even longitudinal stop
- Smooth mechanic balance for the driving discs
- High concentricity
- Clamping circle at a diameter of 8 to 80 mm
- Maintenance-friendly

Areas of application

- Use in turning-milling centres
- For turning and milling of work pieces in one set-up
- Workpiece weight max. 100 kg

CoE

For rational turning of workpieces on their entire length without reclamping with high precision.

Developed according to the modular system, therefore universal exchange of driving discs and centres possible. One set consists of one basic body, one driving disc and suitable centre. Easy to maintain.

Technical features

- Mechanic pressure compensation provides a uniform clamping force also on uneven faces of workpieces
- The spring loaded centre provides a longitudinal workpiece stop on the front side
- Workpiece weight max. 100 kg
- Clamping circuit Ø 8-80 mm
- Approx. value for an axially admitted total load of the 3 supporting pistons: 90 kN

Customer advantage

- Face driver for turning and milling
- Compensating driving plates with radial freedom of movement
- Easy mechanical compensation of the driving plates
- Stable and consistent length stop
- High runout concentricity

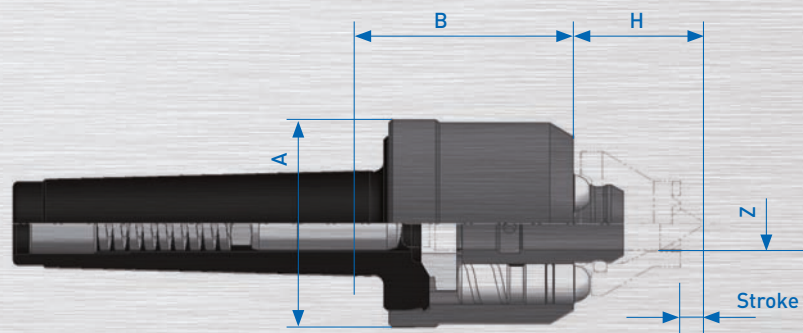
Tool Group A14

Type 684-90

Basic body with morse taper
(all basic bodies without centre) CoE
mechanical

Item no.	MK	A	B	H	Z	Stroke Centres	Weight approx. g
310065	3	62	65	max. 38 min. 26	16	10	1800
310066	4	62	65	max. 38 min. 26	16	10	1900
310068	5	62	65	max. 38 min. 26	16	10	2000

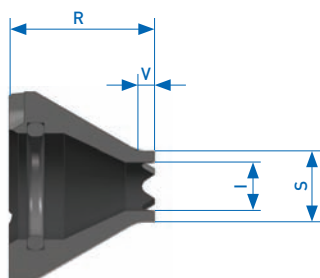
1) Mounting with short taper or centering diameter on request



Accessories CoE

Tool group A14

Type 684-30 Driving discs, toothed
right- and left-hand rotation, free from play

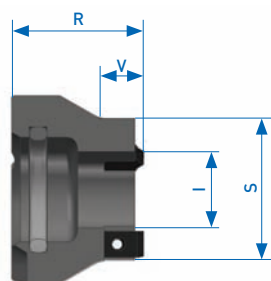


Item no.	Clamping circuit Ø S	Approx. turning range	I	R	V	Matching center point Ø Y	Weight approx. g
1209000	8	9-16	4,5	38	4	4	120
1209001	10	11-20	4,5	38	4	4	120
1209002	12	13-24	7	36	4	6	120
1209003	16	17-32	11	33	4	10	120
1209004	20	21-40	13	30	4	12	120
1209005	25	26-50	17	30	8	16	130
1209006	32	33-64	22	30	10	16	160

Driving discs with carbide toothings on request

Tool group A14

Type 684-31 Driving discs,
with interchangeable hard metal
driving plates 6 x 3,2
right- and left-hand rotation, free from play



Item no.	Clamping circuit Ø S	Approx. turning range	I	R	V	Matching center point Ø Y	Weight approx. g
1209007	20	21-40	7	30	-	6	125
1209008	25	26-50	11	30	-	10	140
1209009	32	33-64	17,5	30	-	16	160
1209010	40	41-80	27	30	-	16	180



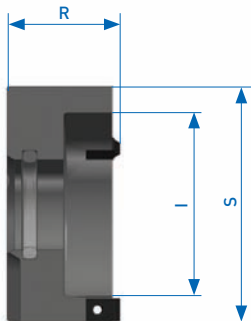
AMTE

Herelsestraat 175, 4726 SR Heerle • T 0165 30 41 88 • F 0165 30 47 88 • E info@amtc.eu • I www.amtc.eu



Tool group A14

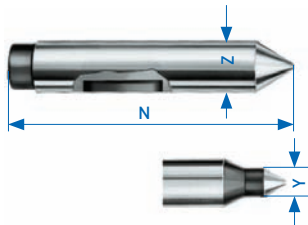
Type 684-31 Driving discs, with interchangeable hard metal driving plates 6 x 3,2 which can be used on 4 sides right- and left-hand rotation, free from play



Item no.	Clamping circuit Ø S	Approx. turning range	I	R	V	Matching center point Ø Y	Weight approx. g
1209011	50	51-100	36	30	-	16	260
1209012	63	64-126	49	30	-	16	420
1209013	80	81-160	66	30	-	16	680

Tool group A14

Type 684-40 Centres CoE



Item no.	Clamping circuit Ø	N	Y	Z	Weight approx. g
1209016	8-10	90	4	16	110
1209017	12	90	16	6	110
1209018	16	90	6	16	110
1209019	20	90	12	16	110
1209020	25-80	90	16	16	120

1) Mounting with short taper or centering diameter on request

Tool group A14

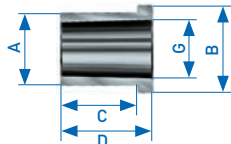
Type 680-93 Hard metal driving plates right- **and** left-hand rotation



Item no.	Size	Clamping circuit Ø S	Weight approx. g
088970	6 x 3,2	20-32	2

Tool group A14

Type 680-72 Mounting sleeve for the clamping of a face driver in lathe chuck



Item no.	MT inside	A	B	C	D	G	Weight approx. g
085033	3	31	39	32	40	23,825	150
085034	4	39	47	42	50	31,267	250
085035	5	54	62	52	60	44,399	480



EUROPE

- Manufacturing bases
- Distribution- and service establishments
- Agents



RÖHM
driven by technology



AMTE

Herelsestraat 175, 4726 SR Heerle • T 0165 30 41 88 • F 0165 30 47 88 • E info@amtc.eu • I www.amtc.eu

