



M-01~03

RIGHT ANGLE MILLING HEAD

Model: R8, NT-30, NT-40

- Precision berel gear
- Rigid design
- Quick and simple to fit and detach
- Weight: R8 / 13kgs, NT30 / 13kgs, NT40 / 21kgs



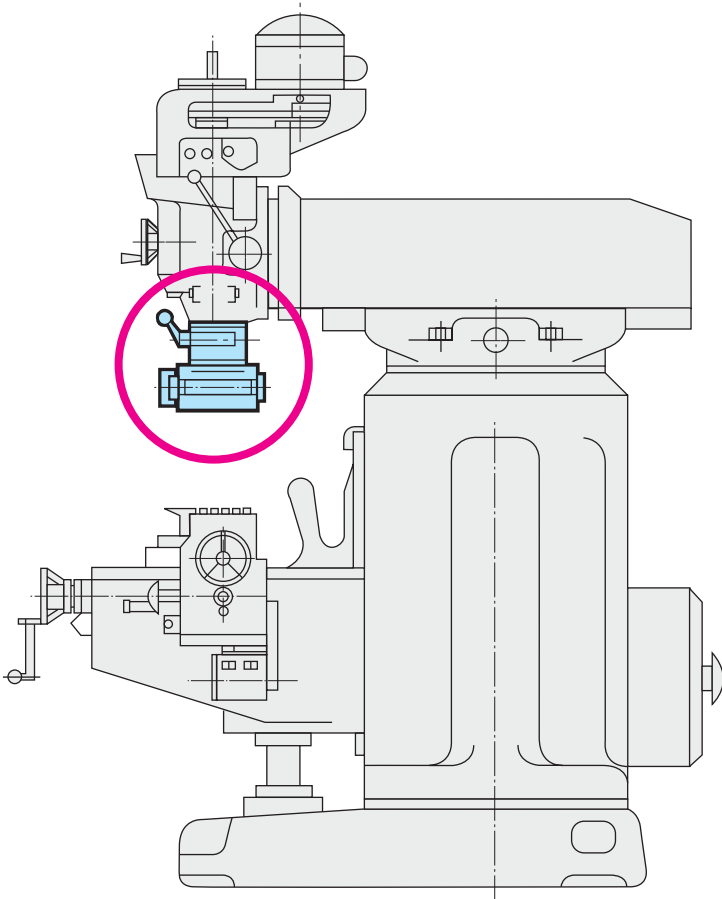
M-04~06

HORIZONTAL MILLING ATTACHMENT (RIGHT ANGLE MILLING HEAD+ARBOR+SUPPORT)

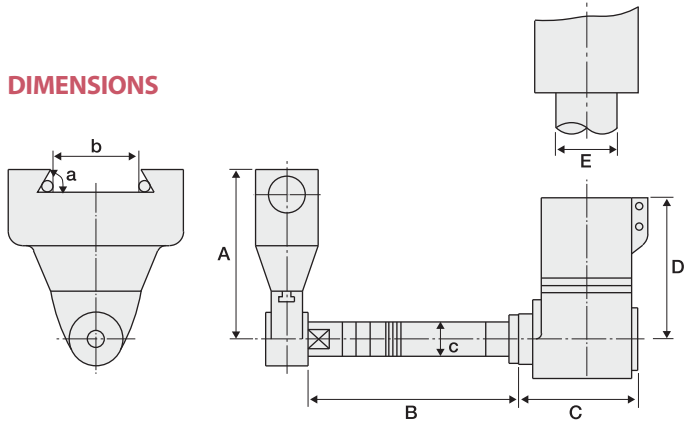
Model: R8, NT-30, NT-40

**Arbor (1" or 25mm or 27mm)
Support (Dove Tial 50 or 60)**

- Weight: R8 / 25kgs, NT30 / 30kgs, NT40 / 32kgs



DIMENSIONS



SPECIFICATIONS

Unit: mm

Model	A	B	C	D	Suitable Milling Head Guile Limewater(E)
R-8	225	230	137	180	85.725~86
NT-30	225	230	155	173	85.725~86
NT-40	225	230	185	178	85.725~115

HORIZONTAL MILLING ARBOR SUPPORT

a	Suitable M/C Ran devotion width (b)	c
50°	140~170	1" or 27mm
55°	140~170	1" or 27mm
60°	140~170	1" or 27mm