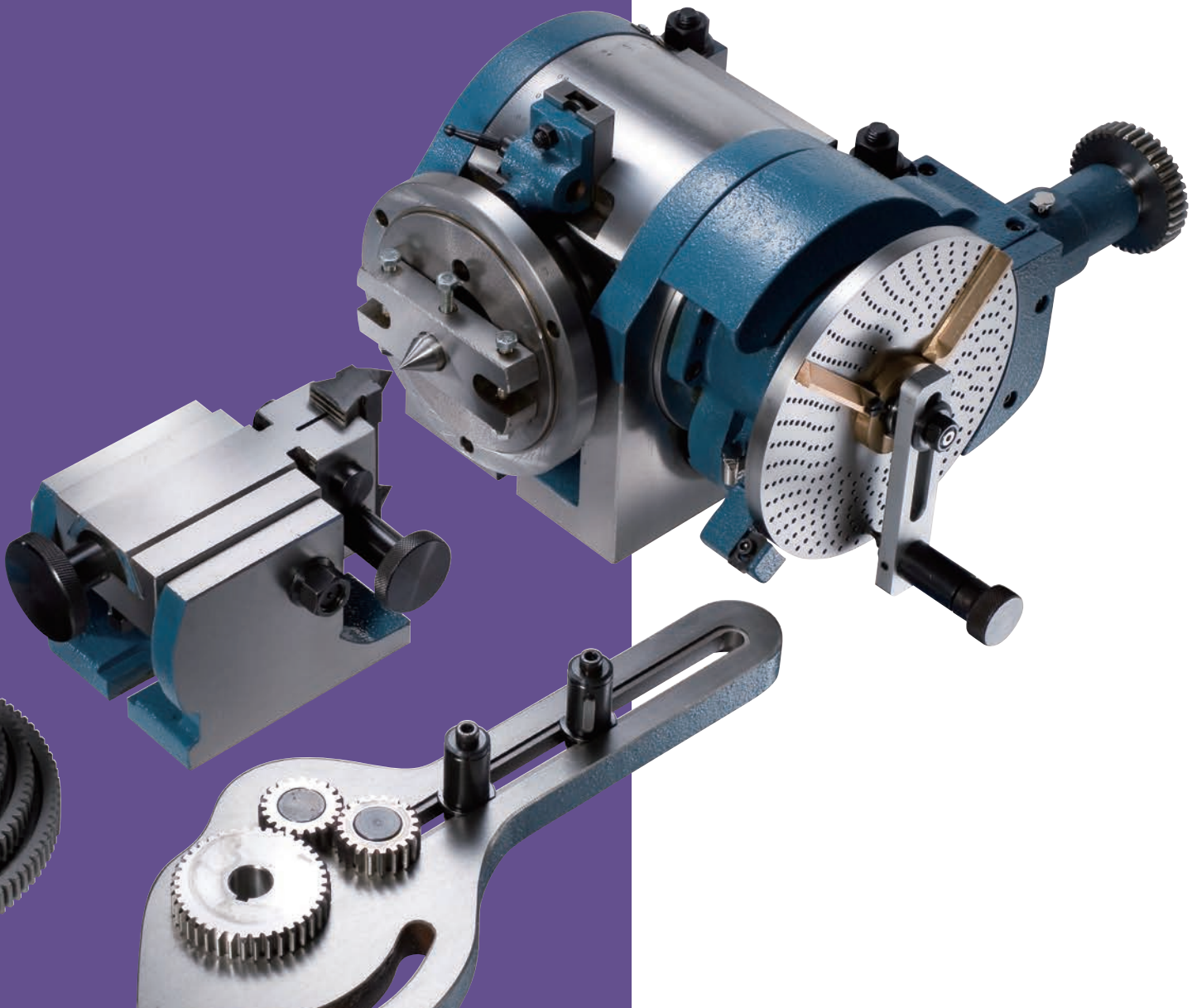


DIVIDING EQUIPMENT



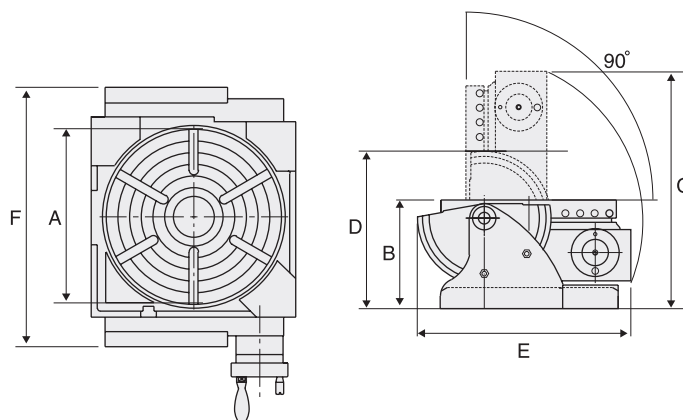


D-01

UNIVERSAL TILTING ROTARY TABLE

Model: HUT-300

- QUICK MANUAL INDEXING.
- Suitable for milling, boring, shaping, drilling, dividing, setting angles and for circular cutting.
- Tilting range of 90 degrees from horizontal to vertical position. For the tilting operation each turn of the handwheel tilts the table by 3 degrees and 5 minutes.
- 24 indexing holes around the edge of the table allow quick manual indexing.
- Graduations are large and clearly marked for quick and easy setting of complex angles.



OPTIONAL ACCESSORIES:

- Tail Stock
- Dividing Plate Set
- 7", 8" or 9" 3-Jaw Chuck

SPECIFICATIONS

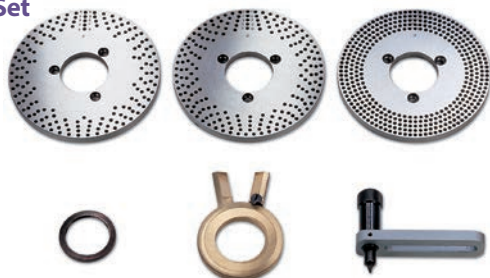
Unit: mm

NO	Model	TABLE DIAMETER (A)	TABLE HEIGHT HORIZONTAL (B)	TABLE HEIGHT VERTICAL (C)	CENTER HEIGHT VERTICAL (D)	E	F	GEAR RATIO	CENTER HOLE	DIRECT INDEXING	Weight (kg)
D-01	HUT-300	Ø300	185	405	228	336	444	90:1	MT-5	24-div.	93

D-02

Dividing Plate Set For HUT-300

Model:
HUT-300DP



NUMBER OF HOLES:

A Plate: 9, 28, 34, 41, 47, 10, 29, 35, 43, 49

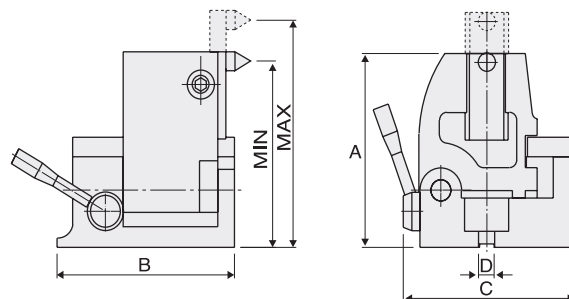
B Plate: 21, 31, 37, 44, 53, 26, 32, 38, 46, 59

C Plate: 61, 71, 77, 83, 91, 67, 73, 79, 89, 97

D-03

Tail Stock For HUT-300

Model:
HUT-300TS



SPECIFICATIONS

Unit: mm

NO	Model	A	B	C	D	Center Height		Weight (kg)
						Max	Min	
D-03	HUT-300TS	200	196	190	16	230	113	23



D-04

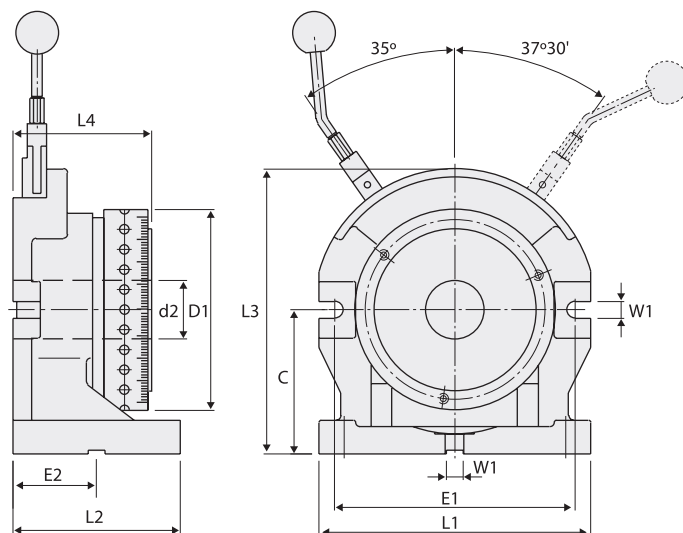
SUPER DIVIDER

Model: HSD-7"

- Superior accuracy
- "One-Touch" Operation
- Saves energy

OPTIONAL ACCESSORY:

- 7" 3-Jaw Chuck



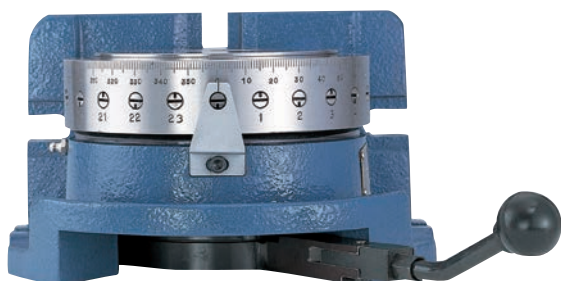
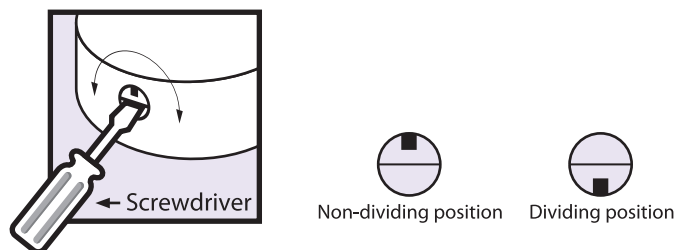
SPECIFICATIONS (Material: FCD 55, Ductile Iron)

Unit: mm / inch

NO	Model	ITEM	C		D1		E1		E2		W1		Weight (kg)
D-04	HSD-7"	MD 192-24	138	57/16"	192	79/16"	230	91/16"	80	35/32"	16	5/8"	32
NO	Model	L1		L2		L3		L4		Internal Dia. (d2)		Permissible Load	
D-04	HSD-7"	260	101/4"	160	61/4"	273	103/4"	132	513/64"	Max. 56 (21/4")		Max. 50kg (110 lb)	

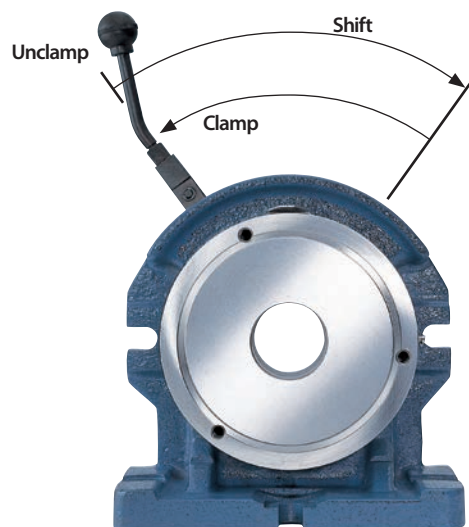
EASY SELECTION OF DIVIDING POSITIONS

The division are easily and quickly set by simply turning the Selector Pins through half a turn with a Screwdriver.



ONE ACTION POSITIONING

Only one hand is required to unclamp, index and clamp the Table due to the unique 'HOMGE' design. Lever action is light and quick.



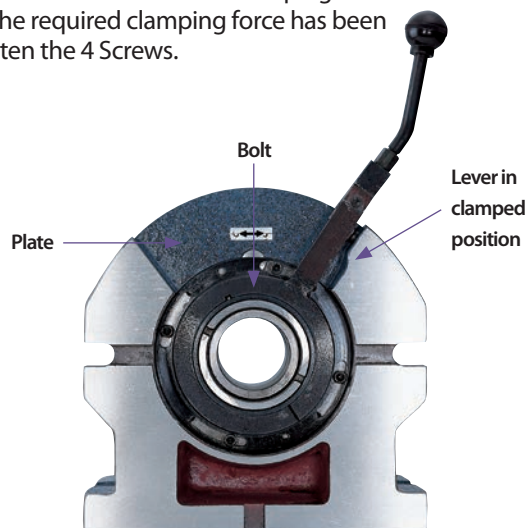
OPERATION

- Set the divisions by turning the required Selector Pins through half a turn with a Screw Driver.
- Moving the Lever clockwise will unclamp the Table and rotate it to the next selected division.
- The Table will be stopped at the division by the plunger.
- The Table is clamped when the Lever is returned to it's original position.



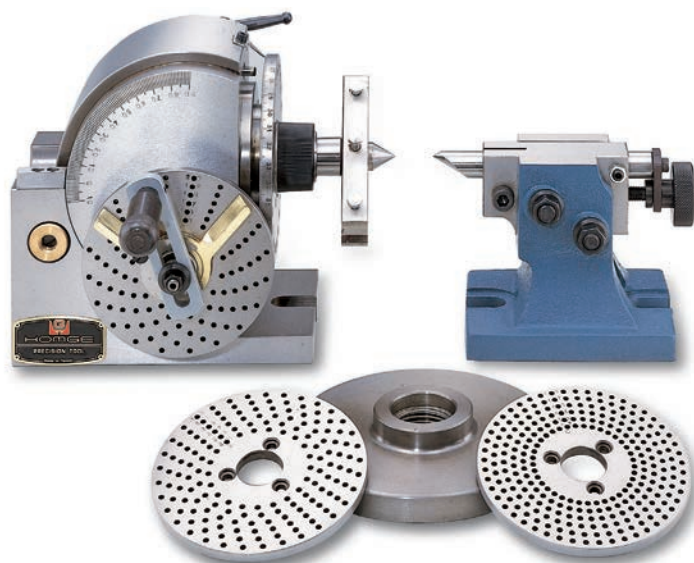
CLAMP FORCE ADJUSTMENT

- Turn the divider to view the underside.
- Loosen the 4 bolts in the slotted holes and rotate the plate in (+) direction to increase clamping force or in (-) direction to reduce the clamping force.
- Place Lever in unclamped position and rotate the Table by hand to check the amount of clamping force on the Table.
- When the required clamping force has been set tighten the 4 Screws.



CAUTION

- Do not move the Lever until the Divider has been fitted on the machine table. The Lever can only be operated once the unit is clamped firmly on the machine.
- Always return the Lever to the clamped position after each movement to prevent jamming.
- Do not force the Lever if it jams through mis-operation, simply turn the Selector Pin to the passing position in order to free the Lever.
- Do not commence machining until the plunger has stopped the Table from rotating and the Lever has been returned to the clamped position.

**D-05~06**

SEMI-UNIVERSAL DIVIDING HEAD

Model: BS-0, BS-1

Semi-Universal Dividing Head is a simplified type of Universal Index Center and can be used for direct and indirect dividing. No accessories for the differential dividing and spiral work are included, but the whole construction of the dividing head and tailstock are identical with those of the universal type.

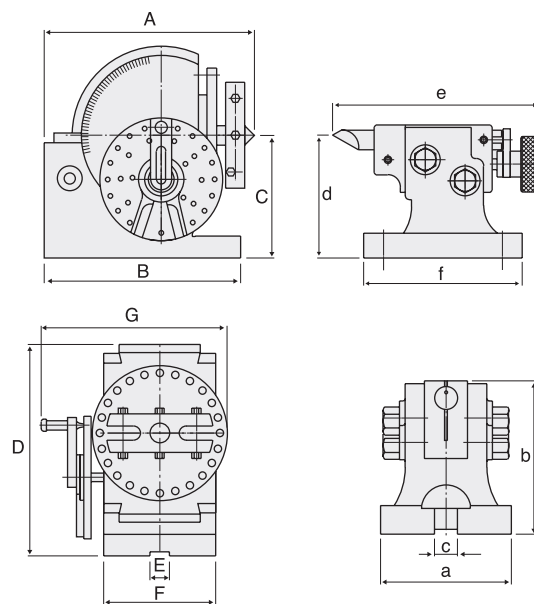
The unit has a Direct Indexing Plate with 24 holes enabling the direct dividing of 2, 3, 4, 6, 8, 12 and 24 divisions. Three further Indexing Plates are provided as standard to facilitate indirect dividing of all divisions from 2 to 50 and also most useful divisions up to 380.

REMARK: " Operation and Service Manual " is included for reference

**OPTIONAL ACCESSORY:****• 3-Jaw Chuck**

4" or 5" 3-Jaw Chuck for BS-0

5" or 6" 3-Jaw Chuck for BS-1

**SEMI-UNIVERSAL DIVIDING HEAD BS-0 & BS-1**

Unit: mm / inch

NO	Model	A		B		C		D		E		F		G		Weight (kg)
D-05	BS-0	189	7 7/16	160	6 19/64	100	3 15/16	173	6 13/16	16	5/8	91	3 37/64	140	5 33/64	22
D-06	BS-1	293	11 11/32	210	8 17/64	128	5 3/32	220	8 21/32	16	5/8	114	4 31/64	156	6 9/64	36

TAIL-STOCK FOR SEMI-UNIVERSAL DIVIDING HEAD BS-0 & BS-1

Unit: mm / inch

NO	Model	a		b		c		d		e		f		Taper of Center	Diameter of Spindle hole
D-05	BS-0	90	3 35/64	105	4 9/64	16	5/8	100	3 15/16	166	6 34/64	127	5	B&S No.7	18
D-06	BS-1	108	4 1/14	134	5 18/64	16	5/8	128	5 3/32	184	7 1/4	150	5 29/32	B&S No.9	20

STANDARD ACCESSORIES:**DIVIDING PLATE A, B, C.****NUMBER OF HOLES OF DIVIDING PLATE (WORM GEAR REDUCTION RATIO 40:1)**

Number of holes	Plate A	15	16	17	18	19	20
	Plate B	21	23	27	29	31	33
	Plate C	37	39	41	43	47	49



D-07

UNIVERSAL DIVIDING HEAD

Model: BS-2

The HOMGE'S Universal Dividing Head is designed for all types of gear cutting. Precision dividing and spiral dividing (except Type BS-0, and BS-1) work with greater precision and efficiency than has been possible before. The center face can be tilted from a horizontal position of 90° down to -10° from vertical, and inclinations can be read off a scale graduated in degrees. The center is built to the highest engineering standards and is factory inspected and tested to ensure complete satisfaction. The ratio of worm to gear is 40:1.

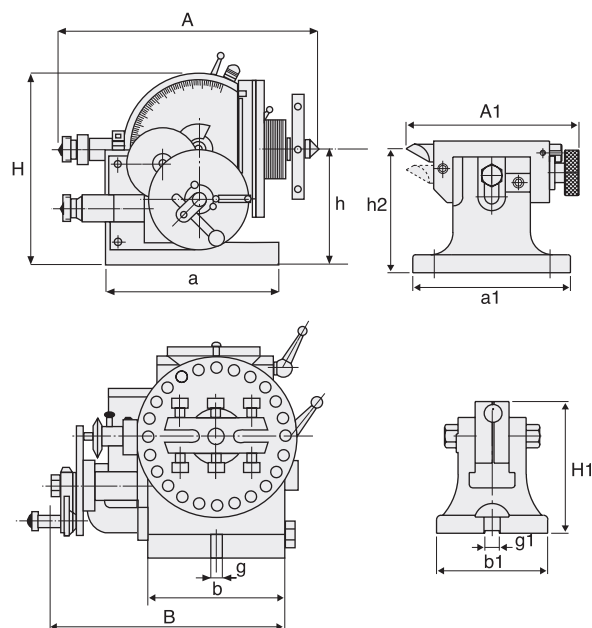
REMARK: " Operation and Service Manual " is included for reference



OPTIONAL ACCESSORY:

• 3-Jaw Chuck

6" or 7" 3-Jaw Chuck for BS-2



UNIVERSAL DIVIDING HEAD BS-2

Unit: mm / inch

NO	Model	A		B		H		h		a		b		g		Taper of center	Weight (kg)
D-07	BS-2	365	1413/32	272	1045/64	236	919/64	132.7	515/64	213	825/64	134	59/32	16	5/8	B&S No.10	73

TAIL STOCK FOR UNIVERSAL DIVIDING HEAD BS-2

Unit: mm / inch

NO	Model	A1		a1		b1		g1		H1		Center Height (h2)		Weight (kg)	Measurement M ³
D-07	BS-2	194	741/64	177	662/64	125	459/64	16	5/8	147	550/64	Max. 138	Min. 115	Packed with the Dividing Head	

STANDARD ACCESSORIES:

DIVIDING PLATE A, B, C.

NUMBER OF HOLES OF DIVIDING PLATE (WORM GEAR REDUCTION RATIO 40:1)

Number of holes	Plate A	15	16	17	18	19	20
	Plate B	21	23	27	29	31	33
	Plate C	37	39	41	43	47	49

**OPTIONAL ACCESSORIES:****• Tail Stock.**

TS-4 for CC-6"

TS-5 for CC-8"

• 3-Jaw Chuck

6" 3-Jaw Chuck for CC-6"

8" 3-Jaw Chuck for CC-8"

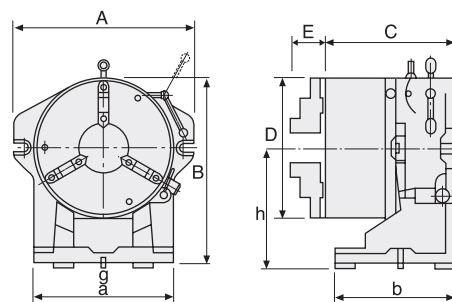
D-08~09**SIMPLE INDEXING SPACER****Model: CC-6", CC-8"**

The Simple Indexing Spacer can be mounted on milling machines, drilling machines and other machine tool where an indexing facility is required. The 3-jaw chucks of both the CC-6" and the CC-8" models have a large through bores of 44mm and 63mm respectively.

These Indexing Spacers are designed for using in horizontal or vertical positions. The master Indexing plate has 24 divisions and is permanently fixed inside the indexer. Divisions of 2, 3, 4, 6, 8 and 12 can also be achieved by the use of the sub-plates, which can be installed quickly following these steps:

1. Open Rear Cover
2. Insert Plate
3. Close Cover
4. Loosen Locking Handle
5. Move Dividing Pin so as to separate it from the Master Plate.
6. Turn the Chuck. When the Master Plate and Sub Plate are aligned the Pin will lock into the slot automatically.
7. Fasten Locking Handle ready for machining.

REMARK: " Operation and Service Manual " is included for reference

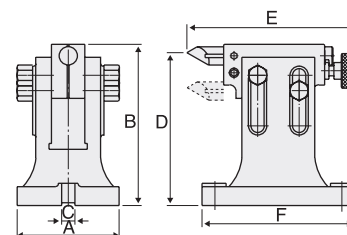
**SPECIFICATIONS**

Unit: mm

NO	Model	Dividable Number	A	B	C	D	E	a	b	h	Inner jaw	Guide block g	Outer jaw	Diameter of hole(turret)	Diameter of hole(chuck)	Weight (kg)
D-08	CC-6"	2,3,4,6	260	218	133	167	27	190	110	125	4~42	16	10~156	44	36	32
D-09	CC-8"	8,12,24	312	270	157	210	28	220	135	150	4~62	16	10~180	63	63	55

**D-12~13****TAIL STOCK FOR CC, CS-TYPE****Model: TS-4, 5**

When using indexing spacers in vertical position, these Tail Stocks can be used to support the workpiece and ensure accurate alignment.

**SPECIFICATIONS**

Unit: mm

NO	Order No.	Suitable for	A	B	C	Center Height		E	F	Weight (kg)
						Max.	Min.			
D-12	TS-4	CC-6"/CS-6"	125	147	16	138	115	194	177	8.2
D-13	TS-5	CC-8"/CS-8"	123	194	16	170	130	204	184	8.6



D-10~11

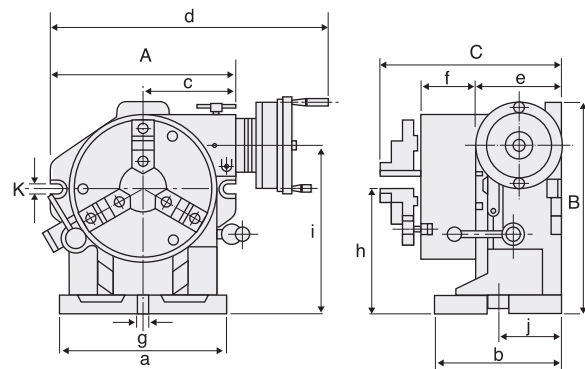
SUPER INDEXING SPACER**Model: CS-6", CS-8"**

In addition to all of the features of the Simple Indexing Spacer, the Super Indexing Spacer incorporates a Worm Gear and is supplied with a Face Plate. With the further addition of the optional Dividing Plate Set, it can also be used as a Dividing Head. The WORM is hardened and precision ground to minimize the wear out of the WORM GEAR.

REMARK: " Operation and Service Manual " is included for reference

**OPTIONAL ACCESSORIES:**

- **Tail Stock**
TS-4 for CS-6"
TS-5 for CS-8"
- **Dividing Plate Set**
DP-4 for CS-6"
DP-5 for CS-8"
- **3-Jaw Chuck**
6" 3-Jaw Chuck for CS-6"
8" 3-Jaw Chuck for CS-8"

**SPECIFICATIONS**

Unit: mm

NO	Model	Dividable Number			Chuck								Face plate			
					Outer diameter		Inner jaw		Outer jaw		Inner dia.		Outer diameter		Thickness	
D-10	CS-6"	2, 3, 4, 6, 8, 12, 24			167		4~42		10~155		44		203		50	
D-11	CS-8"				210		4~62		10~180		63		254		58	
NO	Model	A	B	C	a	b	c	d	e	f	g	h	i	j	k	Weight (kg)
D-10	CS-6"	250	224	190	190	140	117	420	97	65	16	130	198	84	18	35
D-11	CS-8"	310	295	212	225	160	142	460	108	76	16	160	245	95	18	70



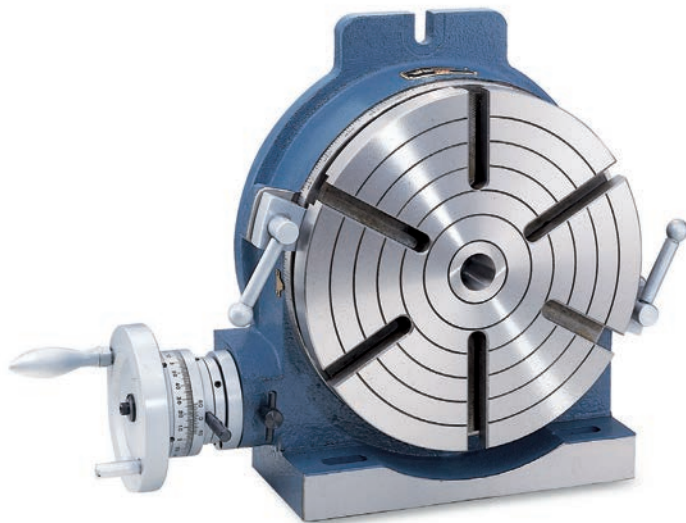
D-14

DIVIDING PLATE SET**Model: DP-4, 5****NUMBER OF HOLES:****DP-4, 5**

A Plate.... 26, 28, 30, 32, 34, 37, 38, 39, 41, 43, 44, 46, 47, 49, 51, 53, 57, 59

B Plate.... 61, 63, 67, 69, 71, 73, 77, 79, 81, 83, 87, 89, 91, 93, 97, 99

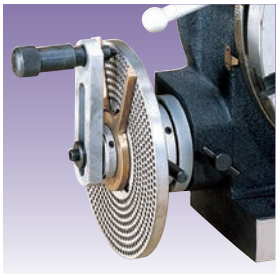
DP-4 for CS-6"**DP-5 for CS-8"**

**D-15~20****HORIZONTAL / VERTICAL
ROTARY TABLE****Model: HHV-150, 200, 250, 300, 350, 400**

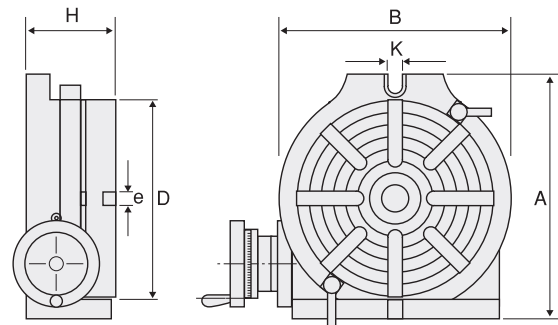
The work table is graduated 360 degrees around its circumference and is driven by a precision Worm and Gear providing a 90:1 reduction ratio. One turn of the Handle moves the Table through 4 degrees. The dial is graduated in divisions of 1 min. and the vernier scale allows readings down to 10 seconds.

- The Worm is hardened and precision ground to minimize wear out of the WORM GEAR.
- Both the upper and the lower surface of the ROTARY PLATES are precision ground.

REMARK: " Operation and Service Manual " is included for reference

**OPTIONAL ACCESSORIES:**

- Tail Stock
- Dividing Plate Set
- 3-Jaw Chuck



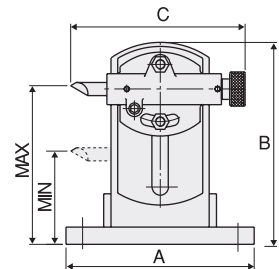
Unit: mm

SPECIFICATIONS

NO	Model	Table		Base dimension		Bolt slots	Center sleeve	Worm gear ratio	Weight (kg)
		D	H	A	B	K			
D-15	HHV-150	150	92	220	160	18	MT-2	90 : 1	12.5
D-16	HHV-200	200	120	310	225	18	MT-3		31.0
D-17	HHV-250	250	120	320	280	18	MT-3		48.5
D-18	HHV-300	300	140	410	325	18	MT-4		77.0
D-19	HHV-350	350	140	460	380	18	MT-4		98
D-20	HHV-400	400	140	510	435	18	MT-5		130

D-26~28**TAIL STOCK****Model: TS-1, 2, 3**

This TAIL STOCK can be used for accurate centring when the Rotary Table is used in vertical position.



Unit: mm

SPECIFICATIONS

NO	Order No.	Suitable for	A	B	C	Center Height		Weight (kg)
						Max.	Min.	
D-26	TS-1	HHV-200 / HHV-250	230	247	210	190	110	13
D-27	TS-2	HHV-300	230	280	210	220	140	15
D-28	TS-3	HHV-350 / HHV-400	230	330	210	264	184	17



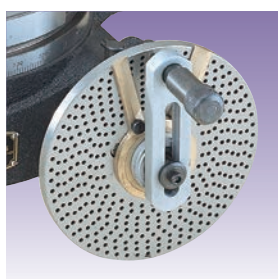
D-21~25

HORIZONTAL ROTARY TABLE**Model: HHT-150, 200, 250, 300, 350**

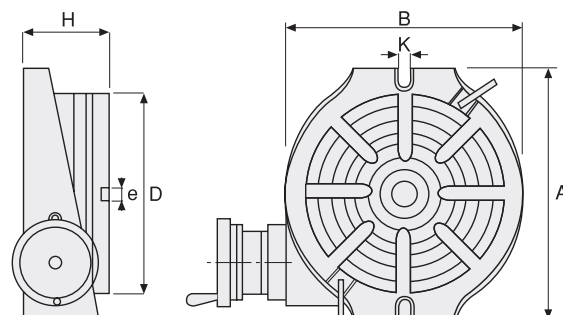
The 'HOMGE' HORIZONTAL ROTARY TABLES have a sturdy design to suit many machining operations on Milling Machines including circular cutting, setting angles and indexing. They are available in a range of sizes to suit various machines and machining applications.

- The Worm is hardened and precision ground to minimize wear out of the WORM GEAR.
- Both the upper and the lower surface of the ROTARY PLATES are precision ground.

REMARK: "Operation and Service Manual" is included for reference

**OPTIONAL ACCESSORIES:**

- Dividing Plate Set
- 3-Jaw Chuck

**SPECIFICATIONS**

Unit: mm

NO	Model	Table		Base dimension		Bolt slots	Center sleeve	Worm gear ratio	Weight (kg)
		D	H	A	B	K			
D-21	HHT-150	150	88	220	160	18	MT-2	90 : 1	15
D-22	HHT-200	200	110	310	225	18	MT-3		33
D-23	HHT-250	250	110	365	280	18	MT-3		46
D-24	HHT-300	300	130	380	350	18	MT-4		73
D-25	HHT-350	350	130	450	380	18	MT-4		90



D-29~31

DIVIDING PLATE SET**Model: DP-1, 2, 3**

The DIVIDING PLATE SET is consist of 2 Indexing Plates, a Sector and a Handle with Plunger. Using this DIVIDING PLATE SET, the indexing of 2 to 100 divisions can be attained quickly and accurately.

NUMBER OF HOLES:

DP-1 A Plate / 15, 16, 17, 18, 19, 20

B Plate / 21, 23, 27, 29, 31, 33

C Plate / 37, 39, 41, 43, 47, 49

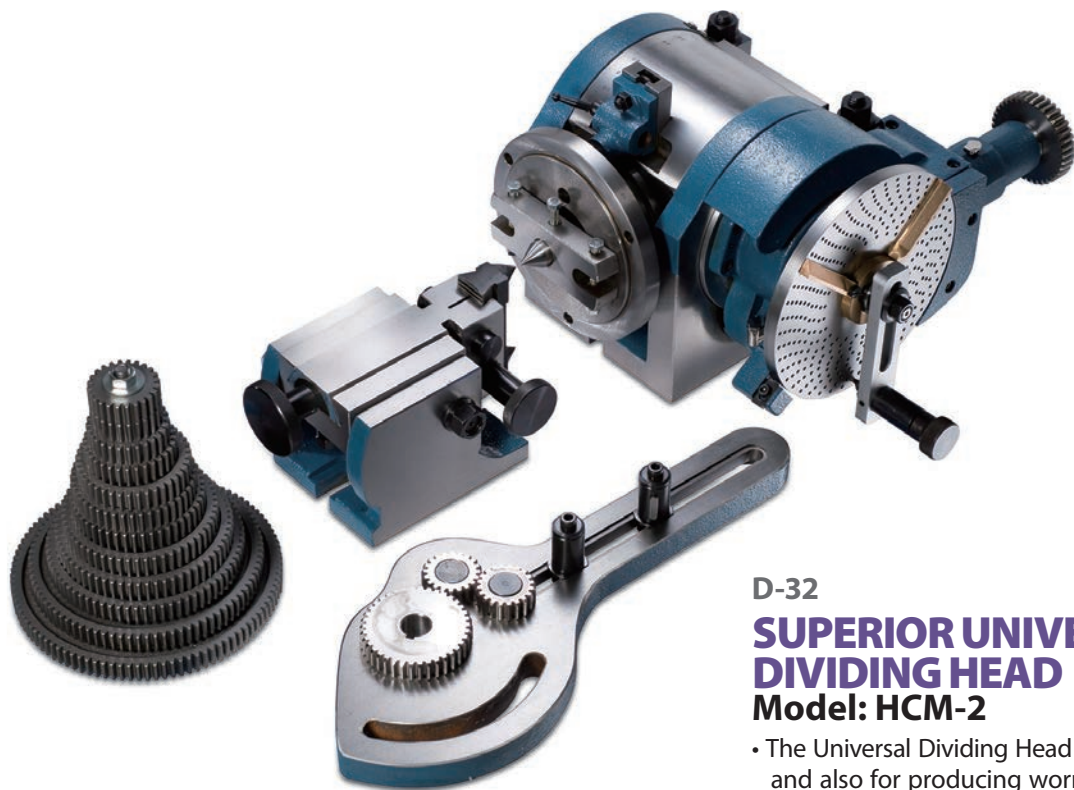
DP-2, 3, A Plate / 26, 28, 30, 32, 34, 37, 38, 39, 41, 43, 44, 46, 47, 49, 51, 53, 57, 59

B Plate / 61, 63, 67, 69, 71, 73, 77, 79, 81, 83, 87, 89, 91, 93, 97, 99

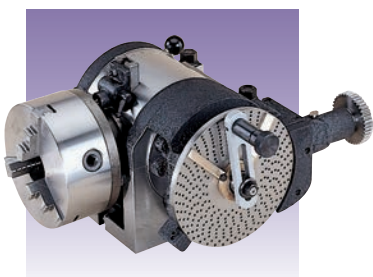
SPECIFICATIONS

Unit: mm/inch

NO	Model	Suitable for	Major dimension of DM							Weight (kg)
			Dividing plate set screw	Inner diameter of sector arm	Outer diameter of spring clip	Grove width in handle plate				
D-29	DP-1	HHV-150 / HHT-150	PCD. $\frac{32}{1.26} \varnothing$	21	0.83	18	0.71	9	0.03	2.5
D-30	DP-2	HHV-200, 250 / HHT-200, 250	PCD. (3holes) $\frac{46}{1.81}$	28.7	1.12	44	1.73	10	0.39	4
D-31	DP-3	HHV-300, 350, 400 / HHT-300, 350	PCD. (3holes) $\frac{46}{1.81}$	28.7	1.12	44	1.73	10	0.39	4

**D-32****SUPERIOR UNIVERSAL
DIVIDING HEAD****Model: HCM-2**

- The Universal Dividing Head can be used for Simple Dividing and also for producing worms, by changing gears and gear quadrant. A particular feature of the HOMGE design is the 55.5mm through bore and MT6 taper. Furthermore, the unit can also be tilted from 0 to 90 degrees.
- The Spindle, Worm and Gear are made of a high grade steel, hardened and ground for high accuracy and durability.
- The Tail Stock is designed with a dovetail construction for high rigidity and can be adjusted in each direction to achieve the correct alignment.
- The Worm and Gear provide a reduction ratio of 40:1 and the unit is supplied with a double sided Dividing Plate.
- Providing divisions on face A of 24, 25, 28, 30, 34, 37, 39, 41, 42 & 43 and on face B of 46, 47, 49, 51, 53, 54, 57, 58, 59, 62 & 66.
- The Change Gears supplied are 24, 28, 32, 38, 40, 44, 48, 56, 64, 72, 86 & 100 Teeth. Thus, a very wide and comprehensive range of indexing is achievable.
- Each Universal Dividing Head is supplied complete with center, carrier, change gear quadrant, set of change gears, Tail Stock and Dividing Plate.

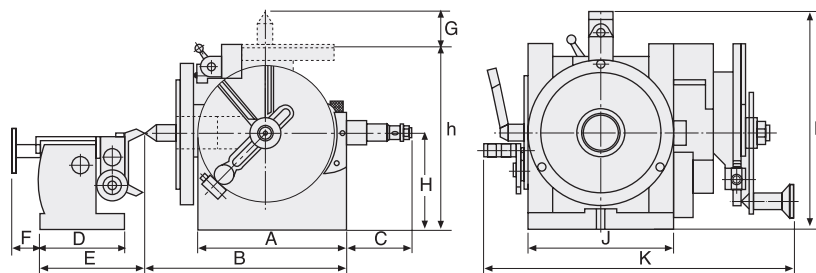
**OPTIONAL ACCESSORY:**

- 7" 3-Jaw Chuck

Center Height of Tail Stock

Max. 165 mm

Min. 38 mm

**SPECIFICATIONS**

Unit: mm/inch

	Model	A		B		C		D		E		F		G	
D-32	HCM-2	245	9 21/32	322	12 11/16	152	6	166	6 17/32	198	7 25/32	50	11 5/16	52	2 1/16
NO	Model	H		h		J		K		L		Weight (kg)			
D-32	HCM-2	143	5 5/8	278	10 15/16	194	7 5/8	465	18 5/16	290	11 13/32	132			